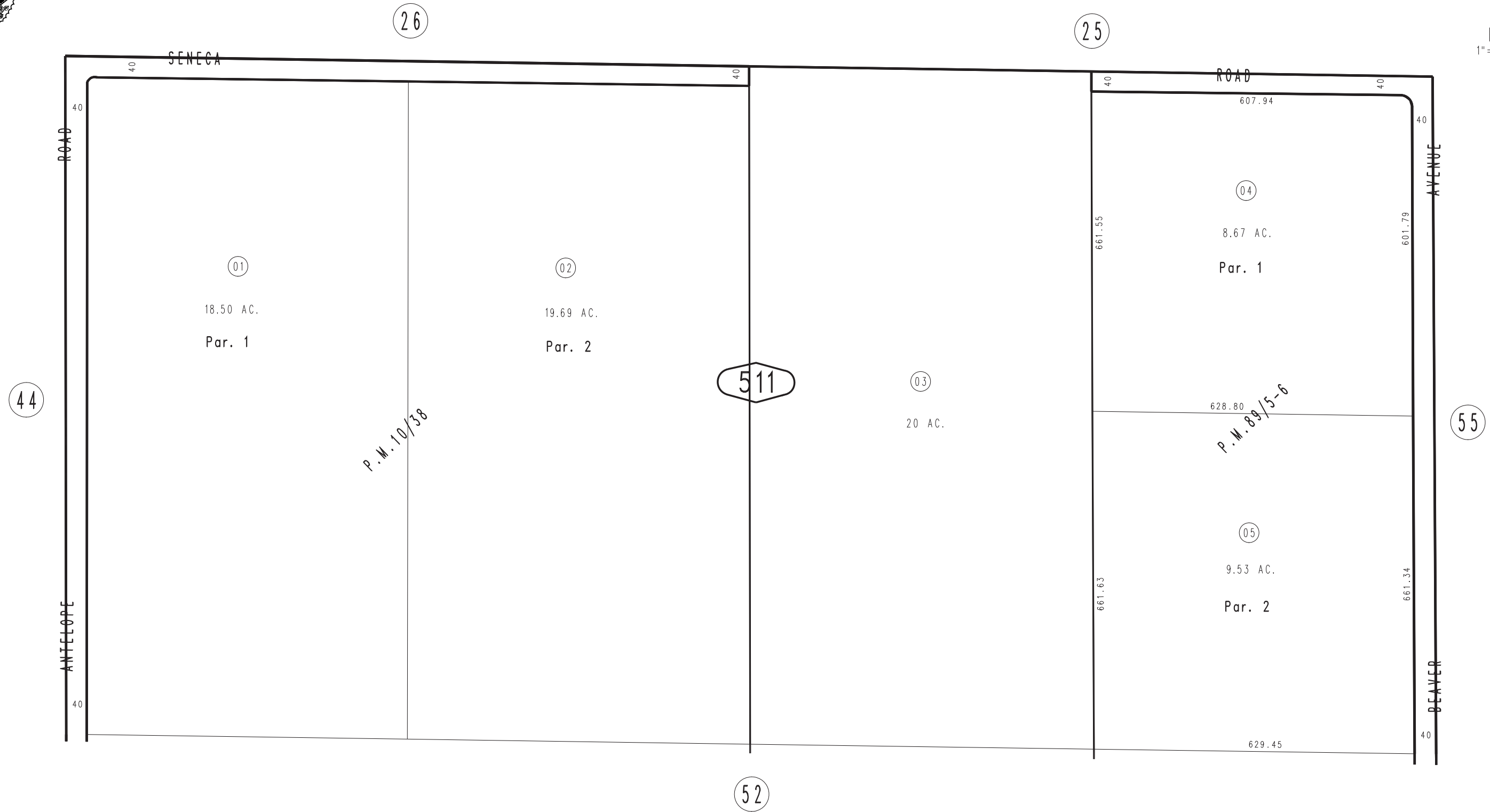


THIS MAP IS FOR THE PURPOSE  
OF AD VALOREM TAXATION ONLY.

N. 1/2, N.E. 1/4, Sec. 24. T.5N., R.6W., S.B.M.

City of Adelanto  
Tax Rate Area  
14036

3102 - 51



NOV. 1987

Ptn. Parcel Map No. 8559, P.M. 89/5-6  
Ptn. Parcel Map No. 1236, P.M. 10/38

Assessor's Map  
Book 3102 Page 51  
San Bernardino County

REVISED  
03/11/10 LH  
05/31/11 LH