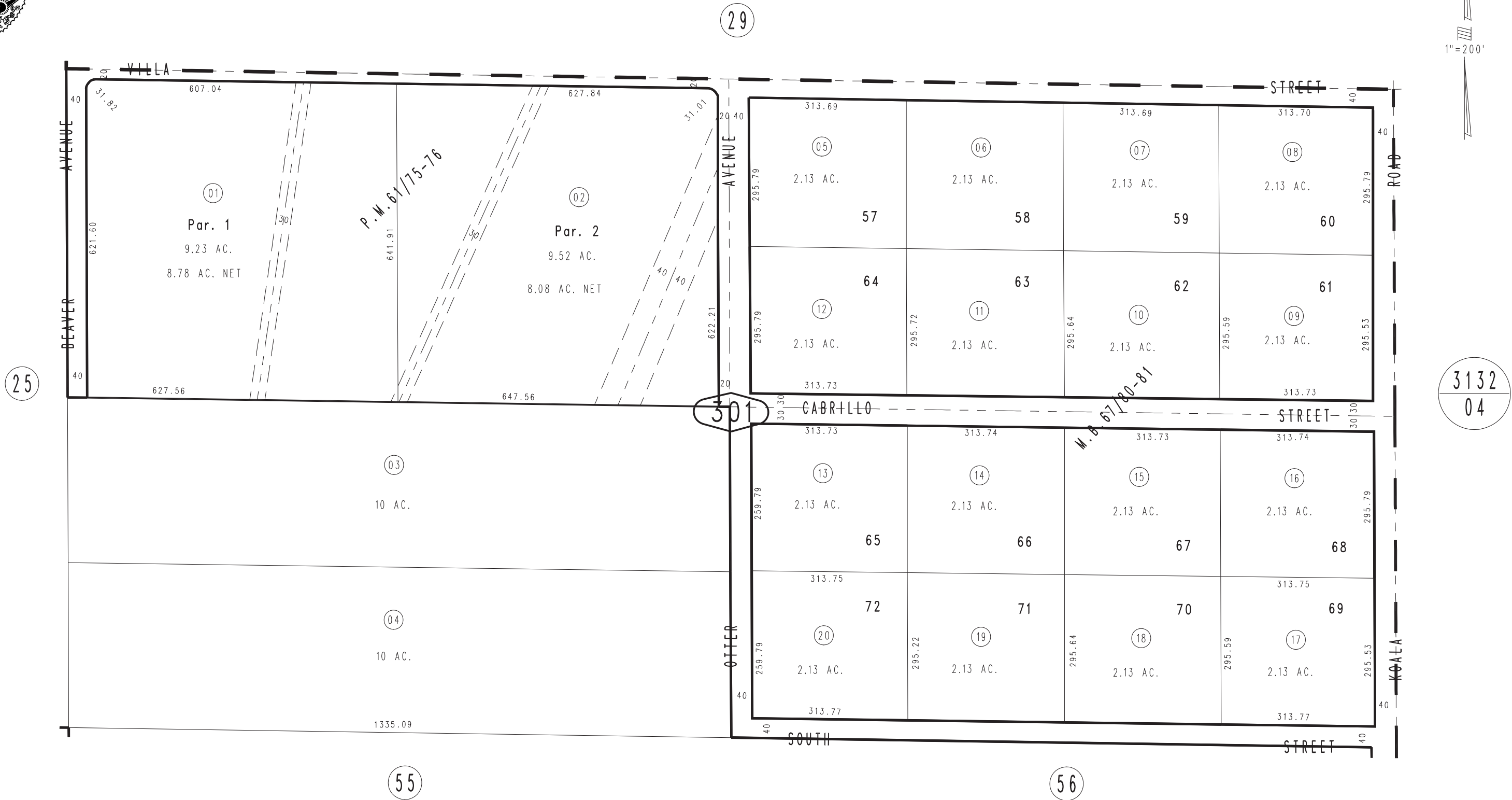


THIS MAP IS FOR THE PURPOSE
OF AD VALOREM TAXATION ONLY.

S. 1/2, S.E. 1/4, Sec. 13, T.5N., R.6W., S.B.M.

City of Adelanto
Tax Rate Area
14036

3102 - 30



OCT.1987

Parcel Map No. 6281, P.M. 61/75-76
Ptn. Tract No. 5572, M.B. 67/80-81

Assessor's Map
Book 3102 Page 30
San Bernardino County

REVISED
03/11/10 LH