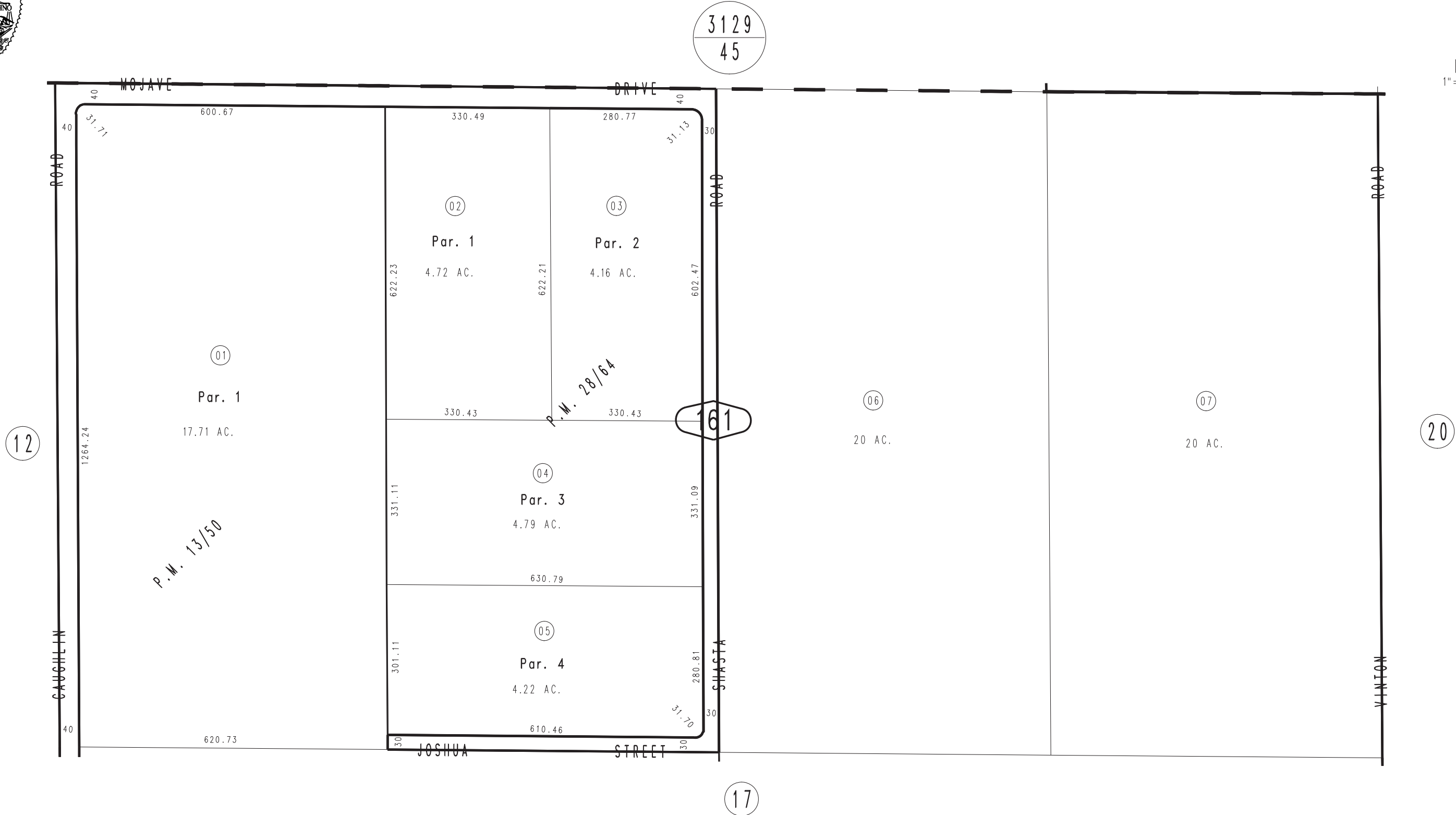


THIS MAP IS FOR THE PURPOSE  
OF AD VALOREM TAXATION ONLY.

N. 1/2, N.W. 1/4, Sec. 14, T.5N., R.6W., S.B.M.

Adelanto Out  
Tax Rate Area  
51013

3102 - 16



OCT. 1987

Parcel Map No. 3021, P.M. 28/64  
Ptn. Parcel Map No. 1525, P.M. 13/50

Assessor's Map  
Book 3102 Page 16  
San Bernardino County

REVISED  
03/11/10 LH