

THIS MAP IS FOR THE PURPOSE  
OF AD VALOREM TAXATION ONLY.

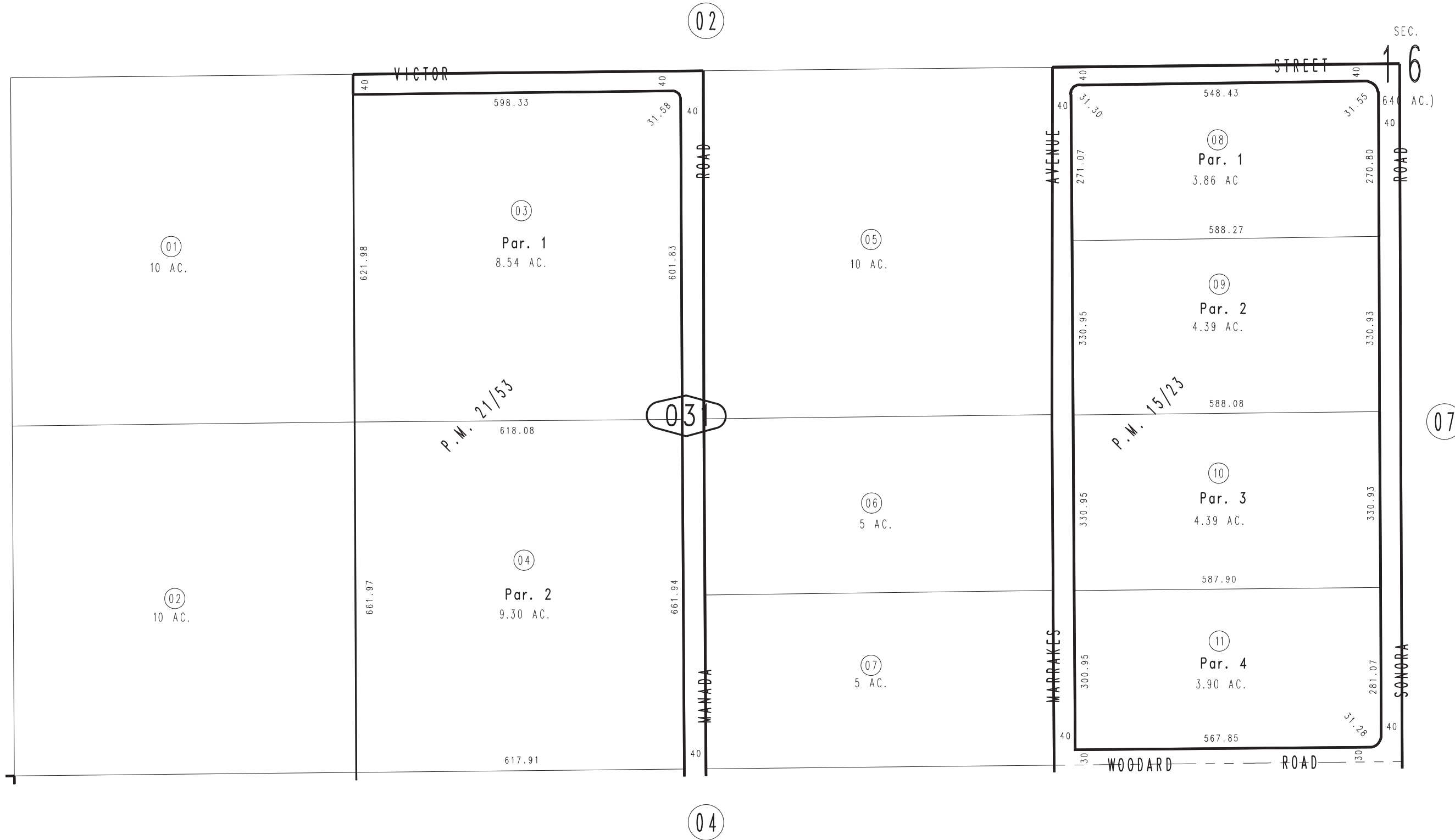
N. 1/2, S.W. 1/4, Sec. 16, T.5N., R.6W., S.B.M.

Adelanto Out  
Tax Rate Area  
51010

3102 - 03



3101  
29



OCT. 1987

Pln. Parcel Map No. 2475, P.M. 21/53  
Parcel Map No. 1727, P.M. 15/23

Assessor's Map  
Book 3102 Page 03  
San Bernardino County

REVISED  
03/11/10 LH