

THIS MAP IS FOR THE PURPOSE OF AD VALOREM TAXATION ONLY.

N. 1/2, N.W. 1/4, Sec. 23, T.5N., R.7W., S.B.M.

Adelanto Out
Tax Rate Area
51025

3101 - 31

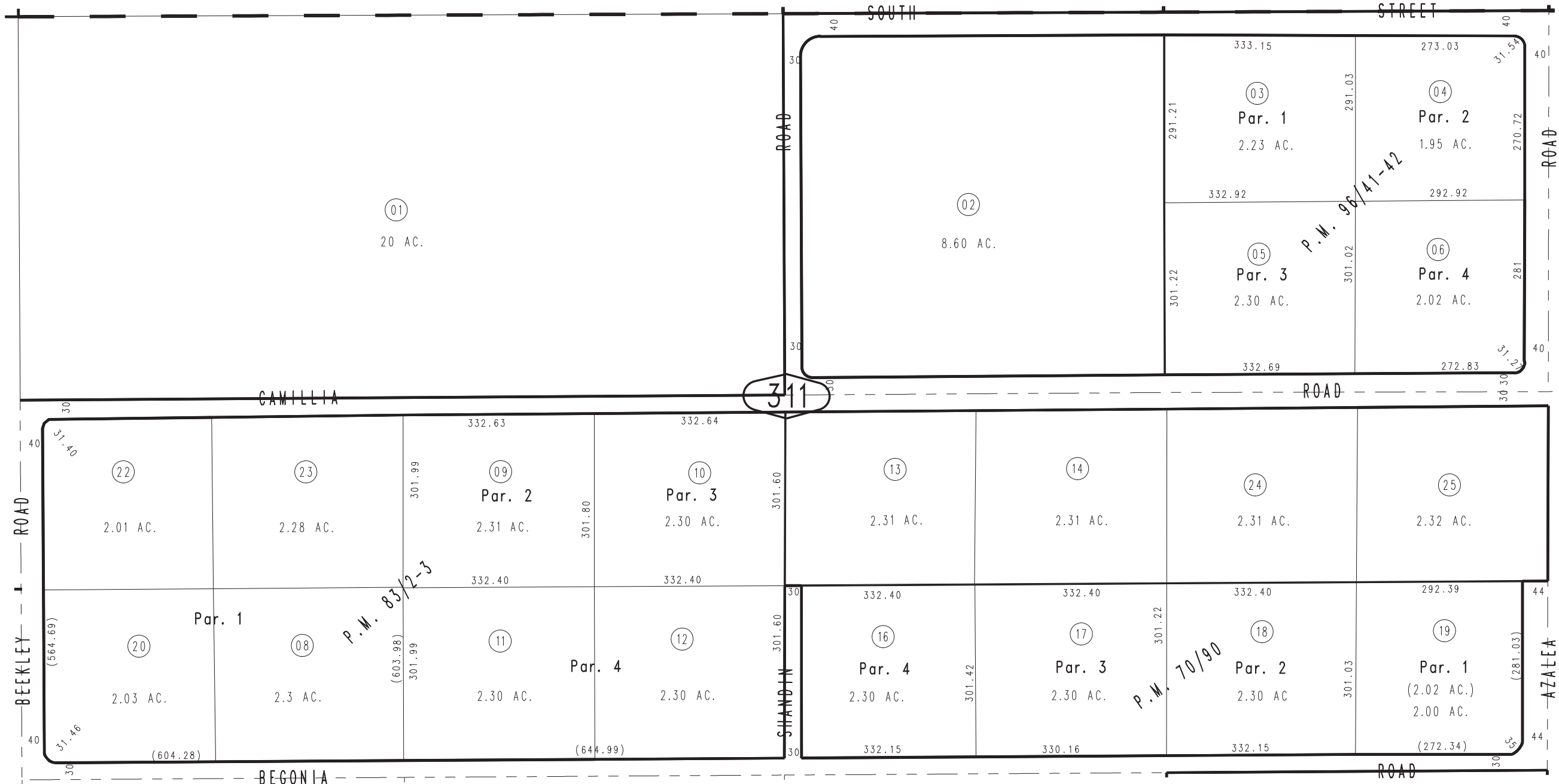


3100
55

34

311

32



JUNE 1987

Parcel Map No. 8907, P.M. 96/41-42
Parcel Map No. 7863, P.M. 83/2-3
Parcel Map No. 6797, P.M. 70/90

Assessor's Map
Book 3101 Page 31
San Bernardino County

REVISED
12/03/08 GL