

THIS MAP IS FOR THE PURPOSE
OF AD VALOREM TAXATION ONLY.

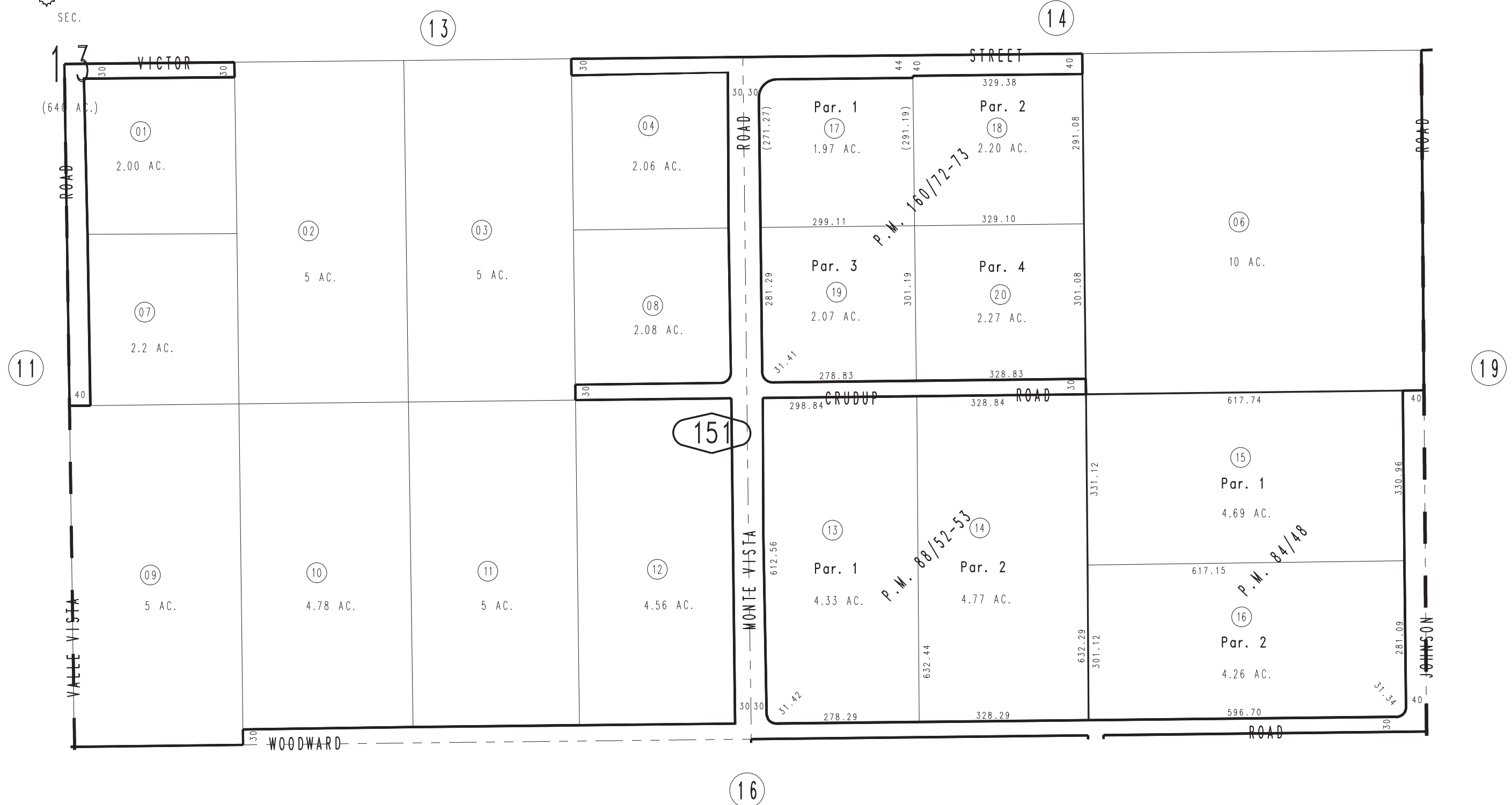
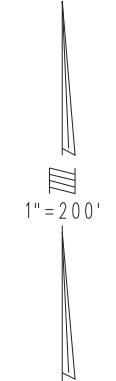
N.1/2, S.E.1/4, Sec.13, T.5N., R.7W., S.B.M.

Adelanto Out
Tax Rate Area
51006

3101 - 15



SEC.



MAY 1987

Parcel Map No. 12895, P.M.160/72-73
Parcel Map No. 8384, P.M. 88/52-53
Parcel Map No. 7332, P.M. 84/48

Assessor's Map
Book 3101 Page 15
San Bernardino County

REVISED
10/20/23 KA