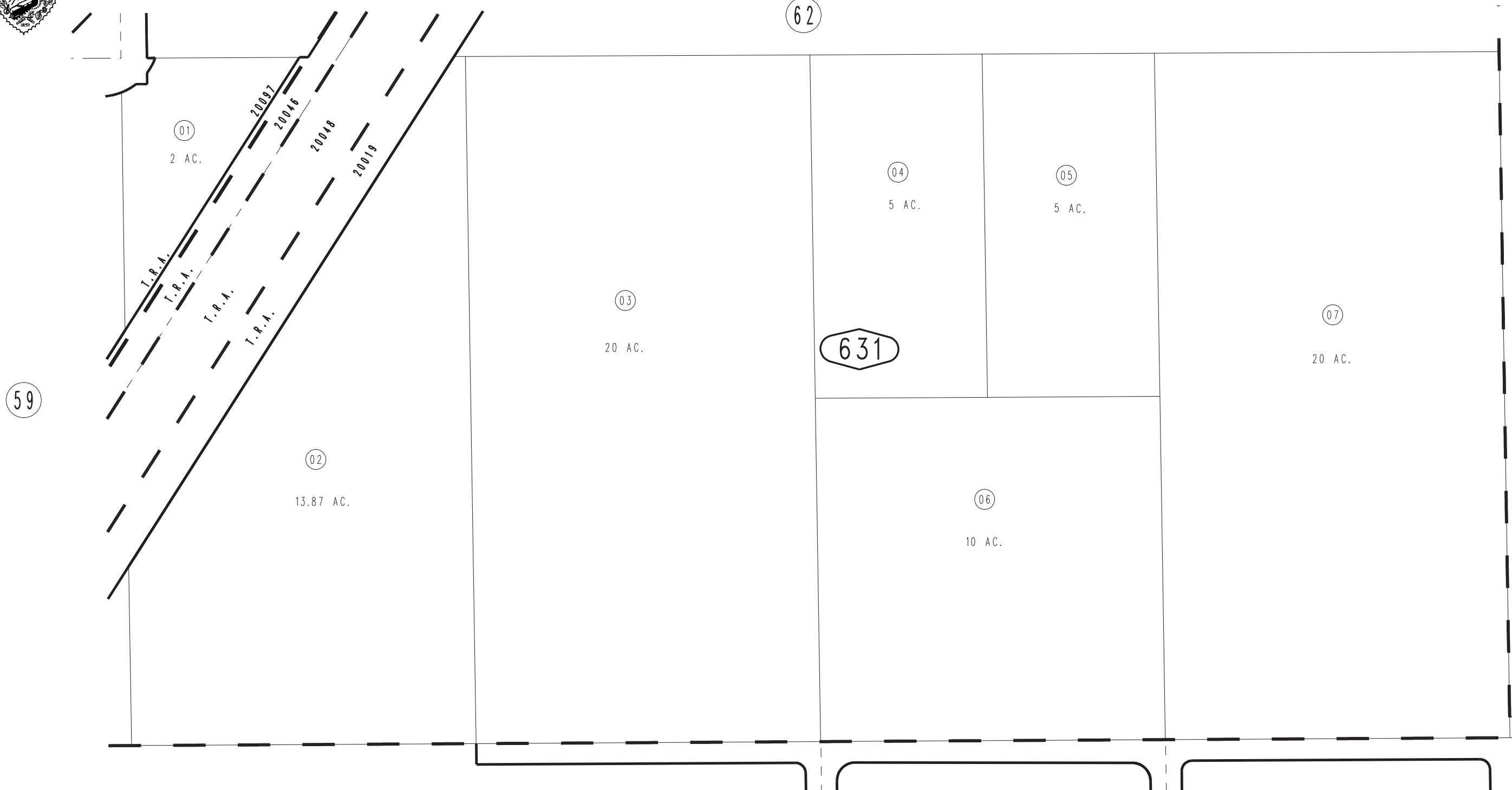
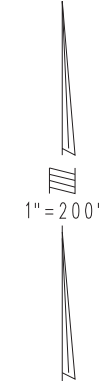


THIS MAP IS FOR THE PURPOSE
OF AD VALOREM TAXATION ONLY.

S.1/2, S.E.1/4, Sec. 22, T.4N., R.5W., S.B.M.

City of Hesperia
Tax Rate Area
20019, 20046
20048

3064-63



MAY 1995

Assessor's Map
Book 3064 Page 63
San Bernardino County

REVISED
09/05/23 KA
02/22/24 KA