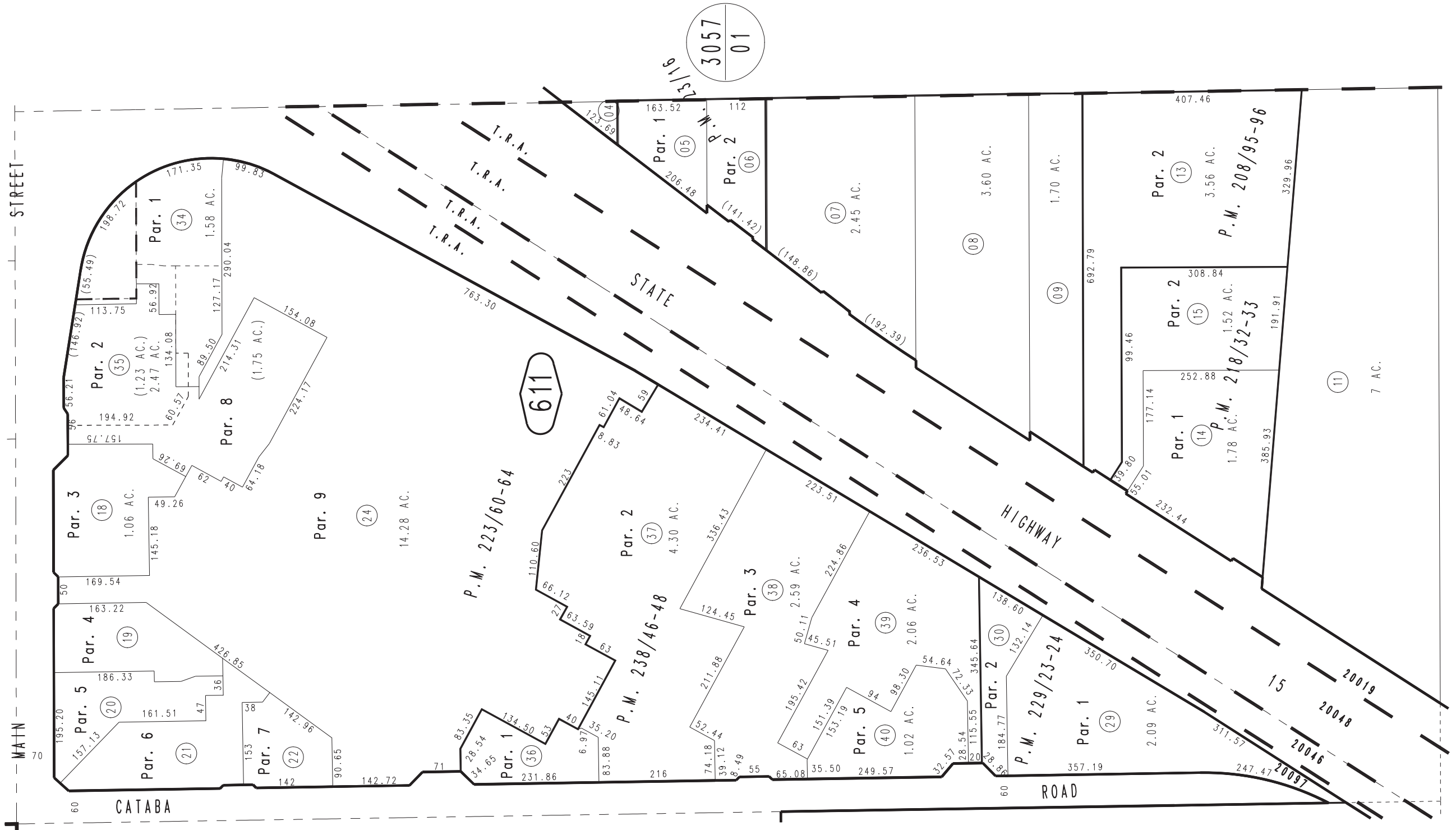


THIS MAP IS FOR THE PURPOSE OF AD VALOREM TAXATION ONLY.

E.1/2, N.E.1/4, Sec. 22, T.4N., R.5W., S.B.M.

City of Hesperia
Tax Rate Area
20019,20046
20048,20097

3064-61



48

62

60

Parcel Map No. 19292, P.M. 238/46-48
Parcel Map No. 19079, P.M. 229/23-24
Ptn. Parcel Map No. 17683, P.M. 223/60-64
Parcel Map No. 17013, P.M. 218/32-33
Parcel Map No. 16166, P.M. 208/95-96
Parcel Map No. 2471, P.M. 23/16

MAY 1995

Assessor's Map
Book 3064 Page 61
San Bernardino County

REVISED
06/09/17 KC