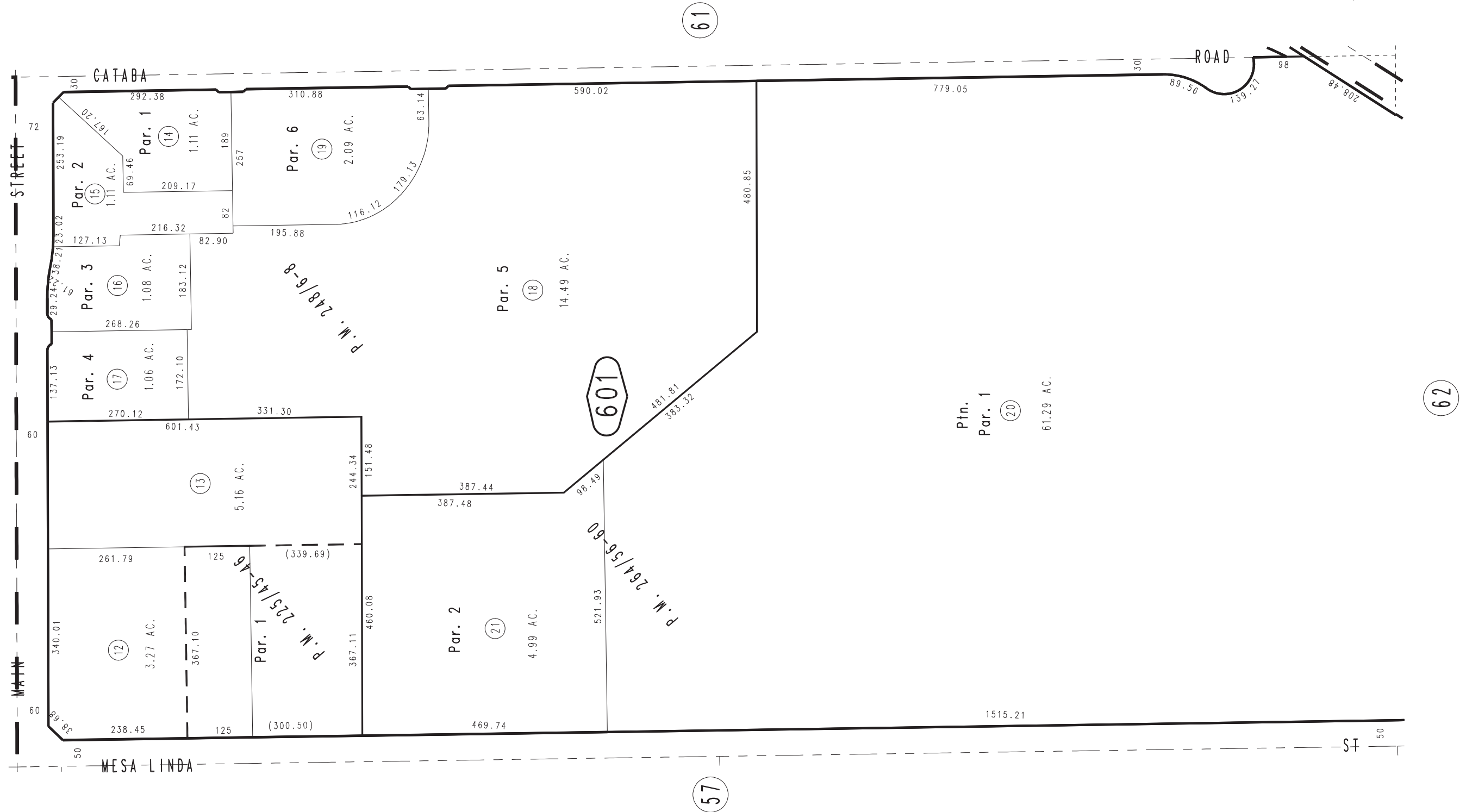
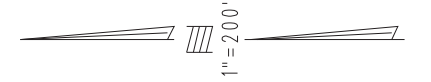


THIS MAP IS FOR THE PURPOSE  
OF AD VALOREM TAXATION ONLY.

W.1/2, N.E.1/4, Sec. 22, T.4N., R.5W., S.B.M.

City of Hesperia  
Tax Rate Area  
20097

3064-60



MAY 1995

Pln. Parcel Map No. 20315, 264/56-60  
Parcel Map No. 19555, P.M. 248/6-8  
Parcel Map No. 18853, P.M. 225/45-46

Assessor's Map  
Book 3064 Page 60  
San Bernardino County

REVISED  
03/26/25 RU