

THIS MAP IS FOR THE PURPOSE
OF AD VALOREM TAXATION ONLY.

S.1/2, S.W.1/4, Sec. 22, T.4N., R.5W., S.B.M.

City of Hesperia
Tax Rate Area
20019,20046
20048,20097
20099

3064-59



58

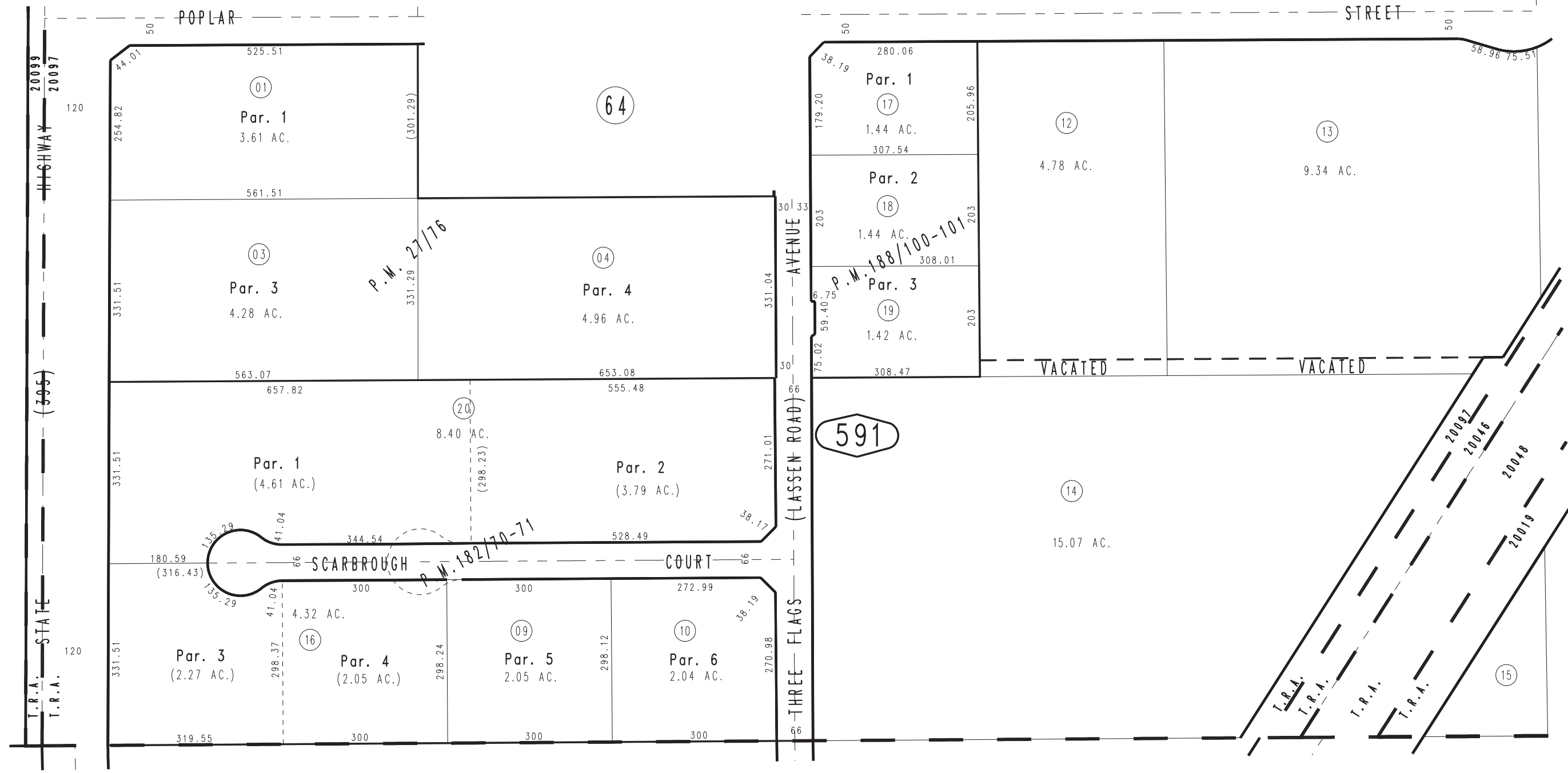
1"=200'

56

63

591

3039
36



Parcel Map No. 15322, P.M. 188/100-101
Parcel Map No. 14242, P.M. 168/97-98, Amending Map P.M. 182/70-71
Parcel Map No. 3055, P.M. 27/76

Assessor's Map
Book 3064 Page 59
San Bernardino County

REVISED
02/22/24 KA
05/06/24 CA

MAY 1995