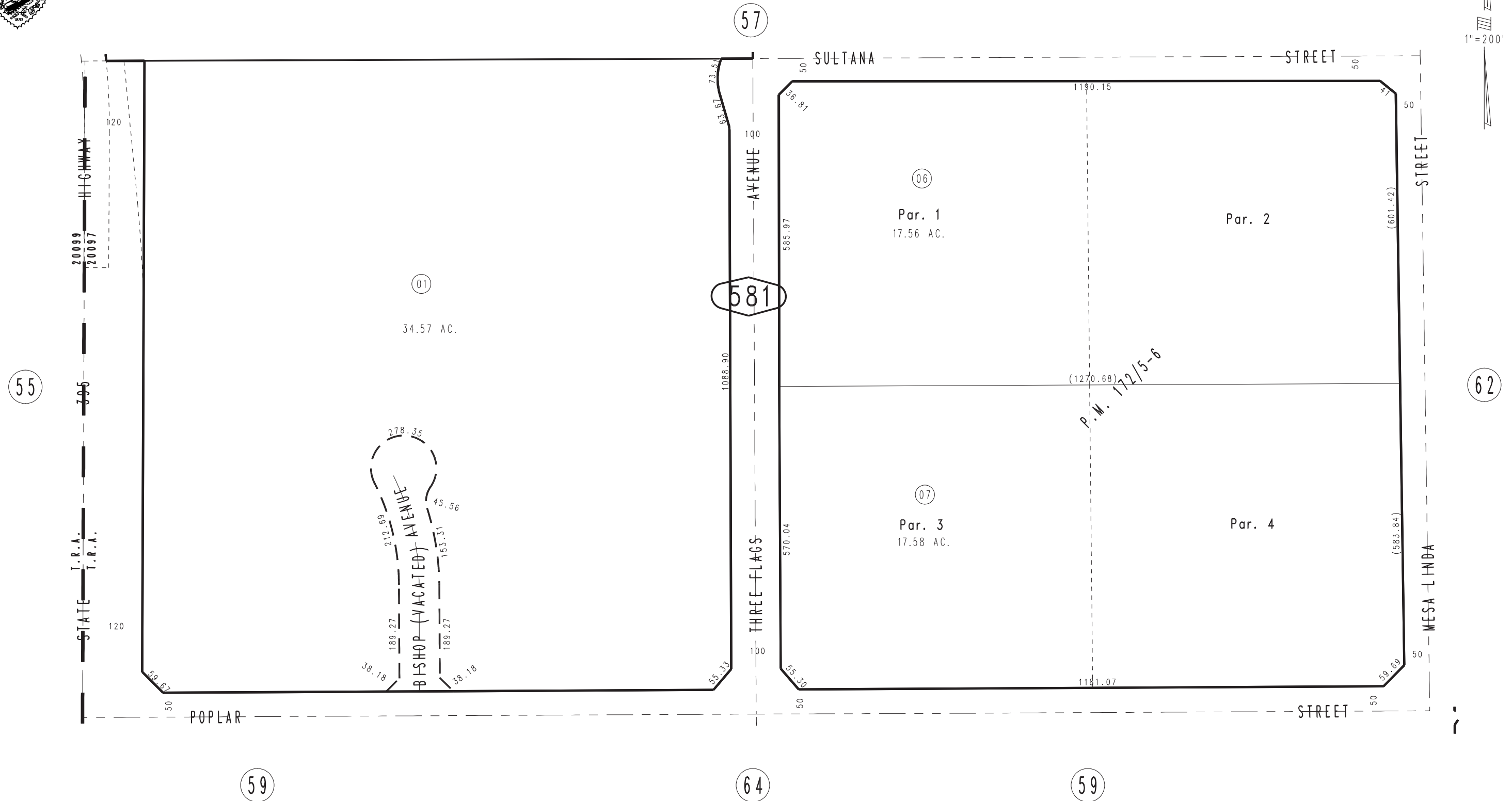


THIS MAP IS FOR THE PURPOSE
OF AD VALOREM TAXATION ONLY.

N.1/2, S.W.1/4, Sec. 22, T.4N., R.5W., S.B.M.

City of Hesperia
Tax Rate Area
20097

3064-58



REVISED	
08/30/23	KA
12/14/23	KA
12/22/23	KA
01/29/24	KA
06/25/24	KA
09/12/24	KA