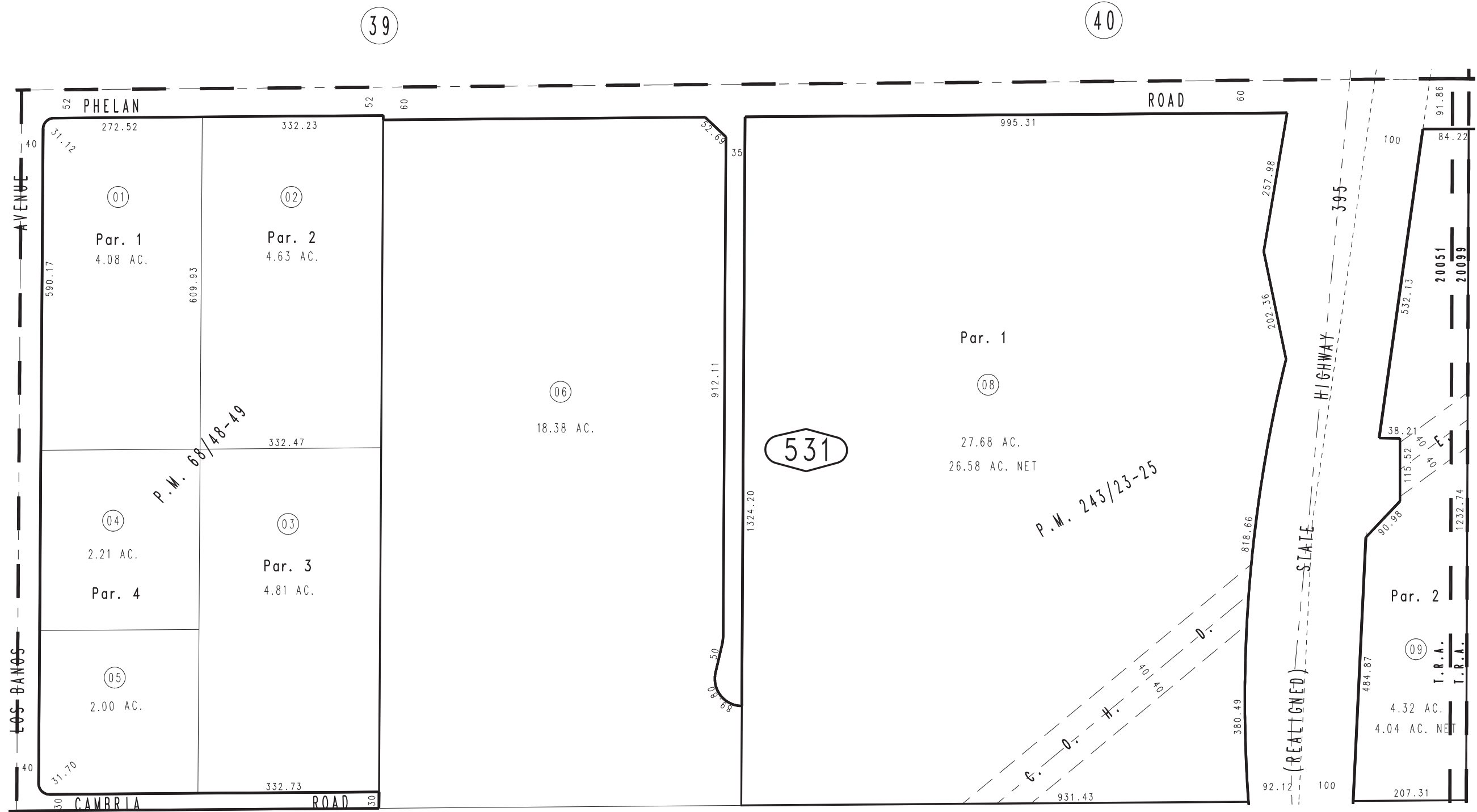


THIS MAP IS FOR THE PURPOSE
OF AD VALOREM TAXATION ONLY.

N.1/2, N.E.1/4, Sec. 21, T.4N., R.5W., S.B.M.

City of Hesperia
Tax Rate Area
20051 20099

3064-53



49

57

54

MAY 1995

Parcel Map No. 19159, P.M. 243/23-25
Parcel Map No. 6934, P.M. 68/48-49

Assessor's Map
Book 3064 Page 53
San Bernardino County

REVISED
04/18/24 XM