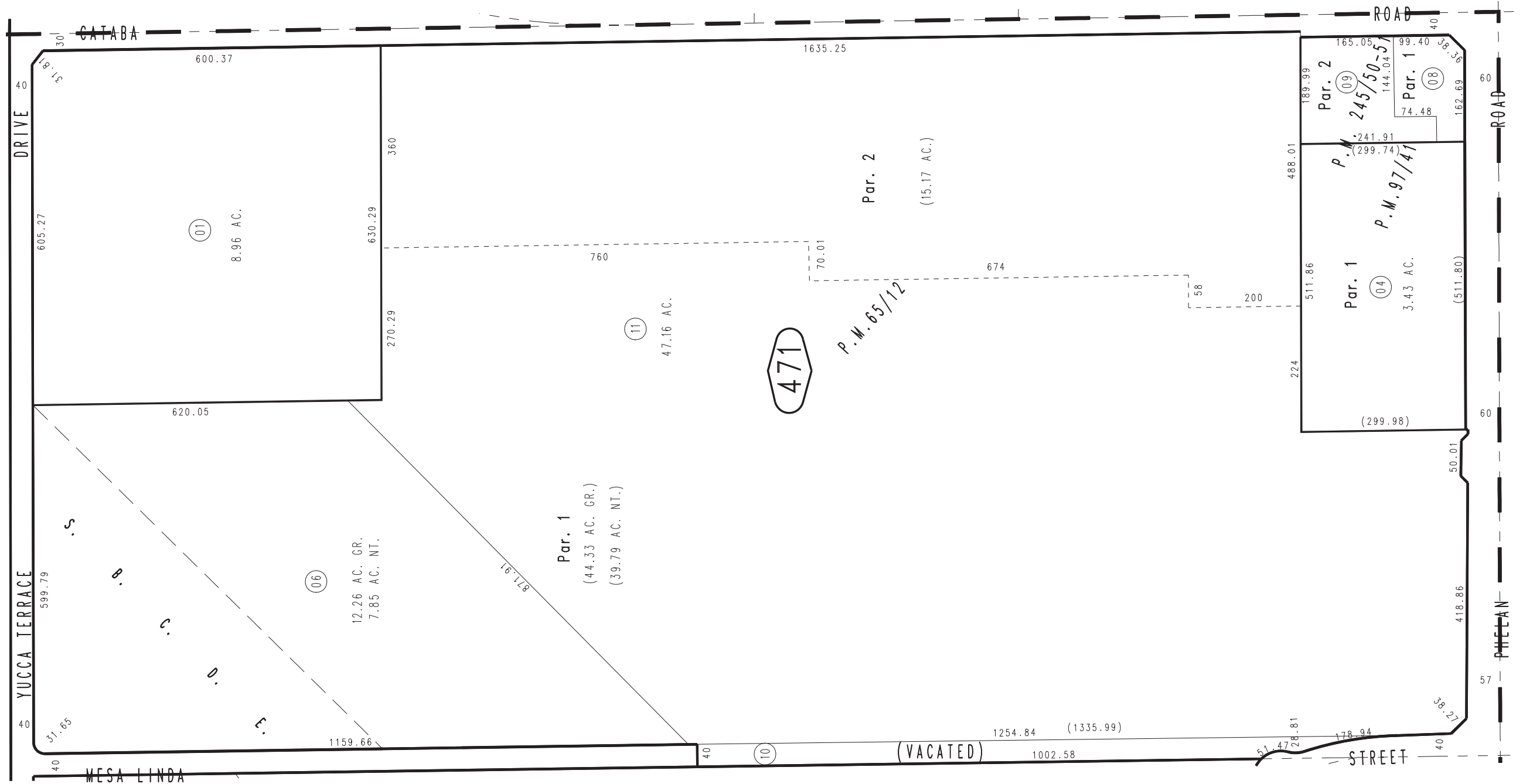
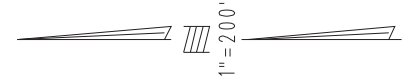


THIS MAP IS FOR THE PURPOSE
OF AD VALOREM TAXATION ONLY.

W.1/2,S.E.1/4,Sec.15,T.4N.,R.5W.,S.B.M.

City of Hesperia
Tax Rate Area
20118

3064-47



Parcel Map No. 19694, P.M. 245/50-51
Ptn. Parcel Map No. 9325, P.M. 97/41
Parcel Map No. 6694, P.M. 65/12

Assessor's Map
Book 3064 Page 47
San Bernardino County

REVISED
01/21/16 GW
05/25/17 KA
11/01/17 RU
02/07/18 GW