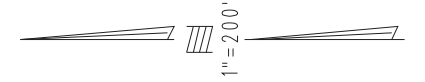


THIS MAP IS FOR THE PURPOSE
OF AD VALOREM TAXATION ONLY.

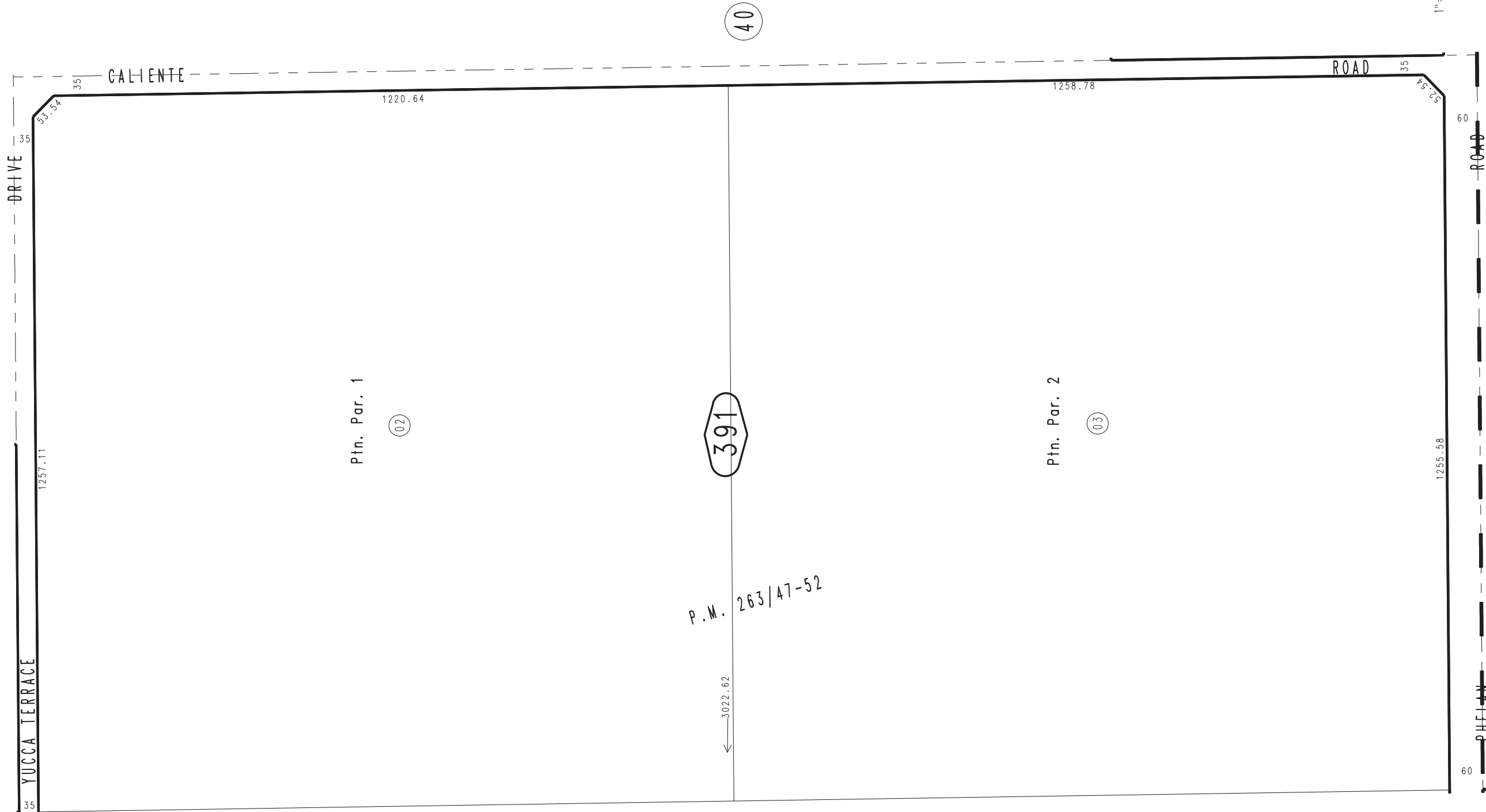
W.1/2, S.E.1/4, Sec. 16, T.4N.,R.5W., S.B.M.

City of Hesperia
Tax Rate Area
20119

3064-39



38



40

391

P.M. 263/47-52

3022.62

36

53