

THIS MAP IS FOR THE PURPOSE
OF AD VALOREM TAXATION ONLY.

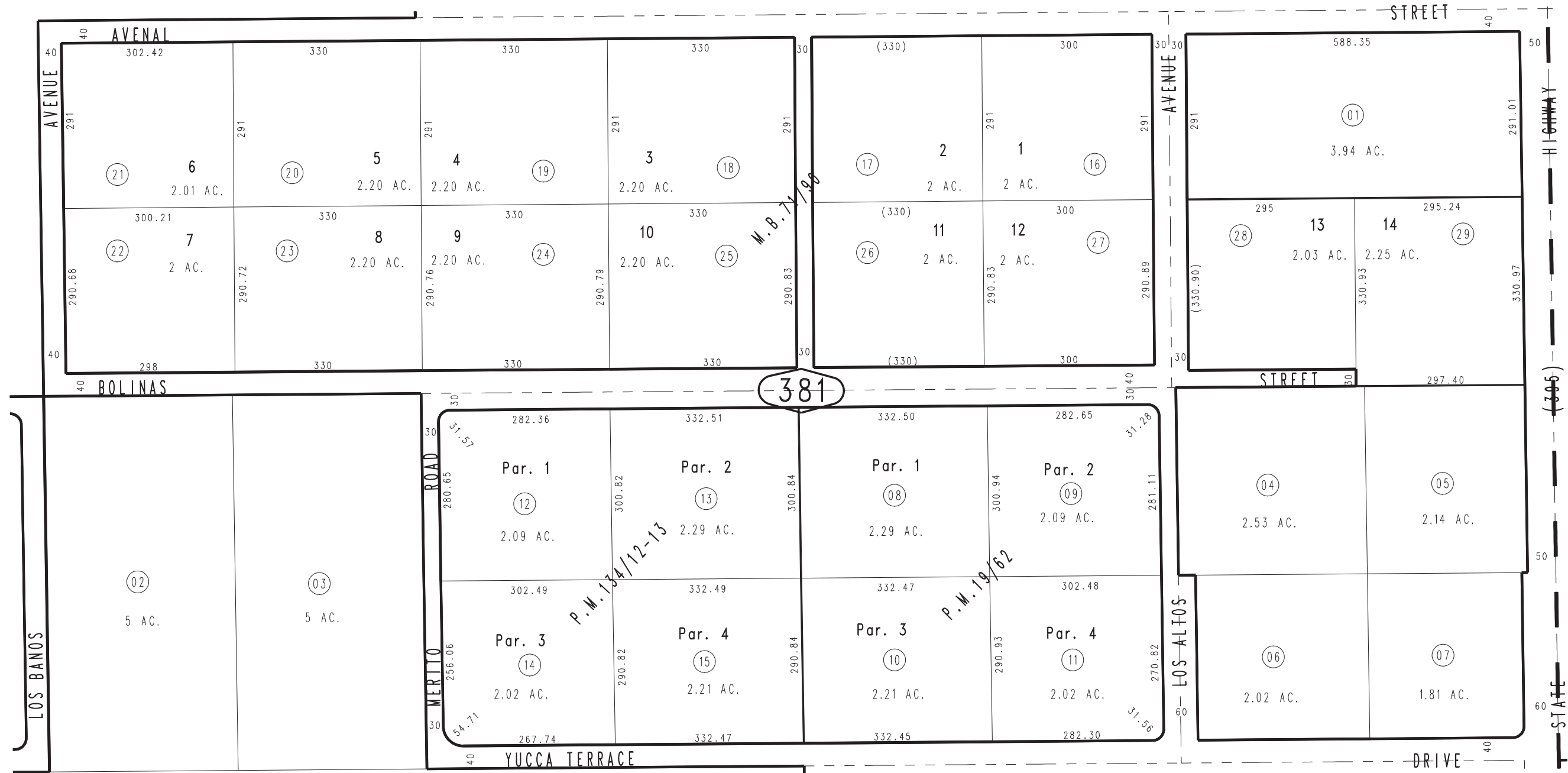
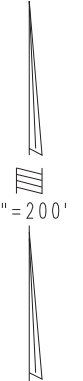
S.1/2, N.E.1/4, Sec. 16, T.4N.,R.5W., S.B.M.

City of Hesperia
Tax Rate Area
20119

3064-38



37



34

381

42

39

40

Tract No. 5681, M.B. 71/90
Parcel Map No. 11687, P.M. 134/12-13
Parcel Map No. 2261, P.M. 19/62

Assessor's Map
Book 3064 Page 38
San Bernardino County