

THIS MAP IS FOR THE PURPOSE OF AD VALOREM TAXATION ONLY.

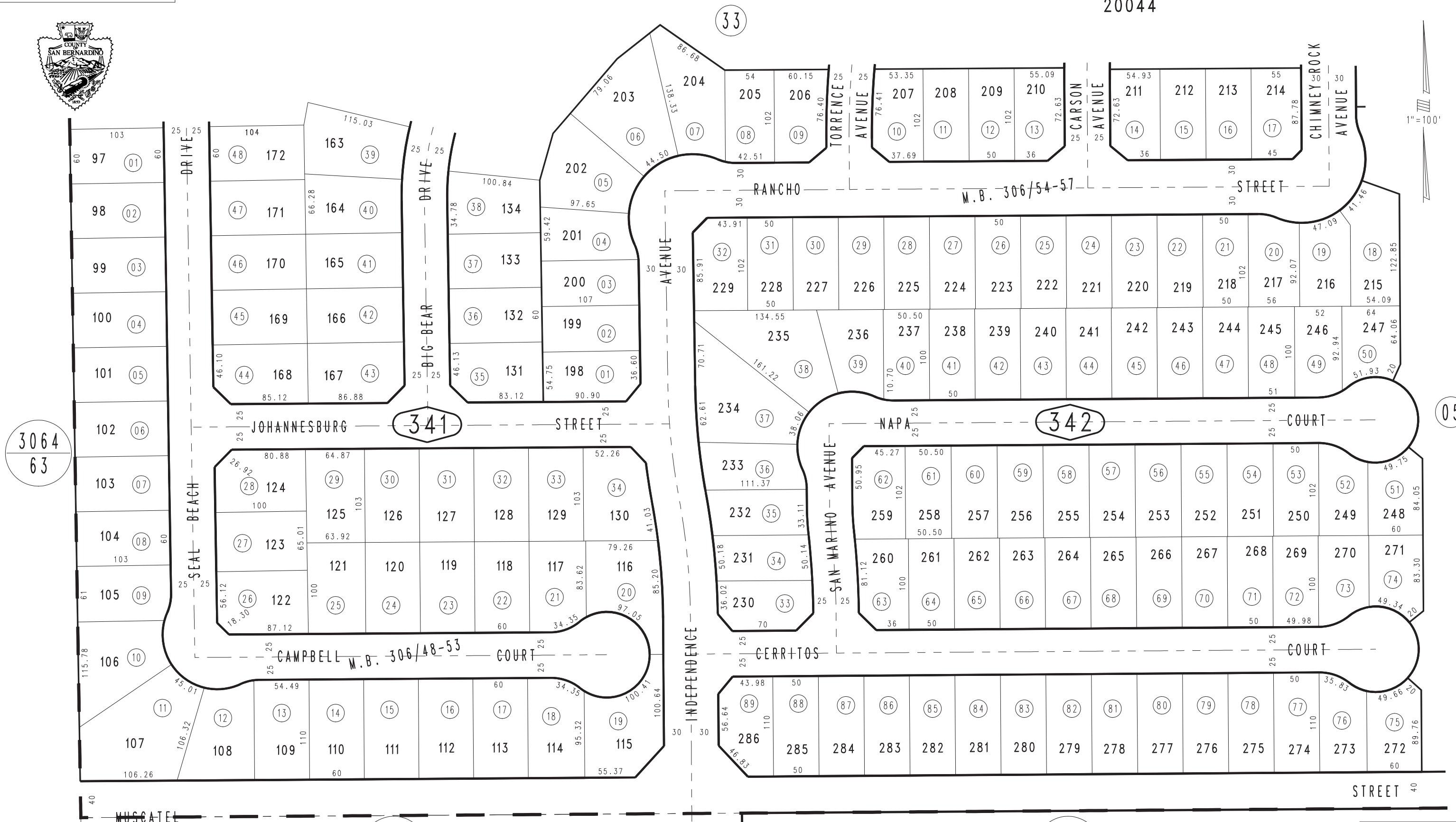
Ptn. Tract No. 16676-2, M.B. 306/48-53

City of Hesperia
Tax Rate Area
20044

3057-34



1"=100'



3064
63

3046
29

3046
01

AUGUST 2005 RM

Tract No. 16676-3, M.B. 306/54-57

Ptn. S.W.1/4, Sec. 23
T.4N., R.5W.

Assessor's Map
Book 3057 Page 34
San Bernardino County

REVISED
08/23/05 RM
12/09/05 KC
08/02/07 KC