

THIS MAP IS FOR THE PURPOSE  
OF AD VALOREM TAXATION ONLY.

Ptn. Tract No. 17012, M.B. 304/19-27

City of Hesperia  
Tax Rate Area  
20044

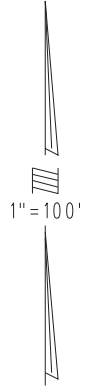
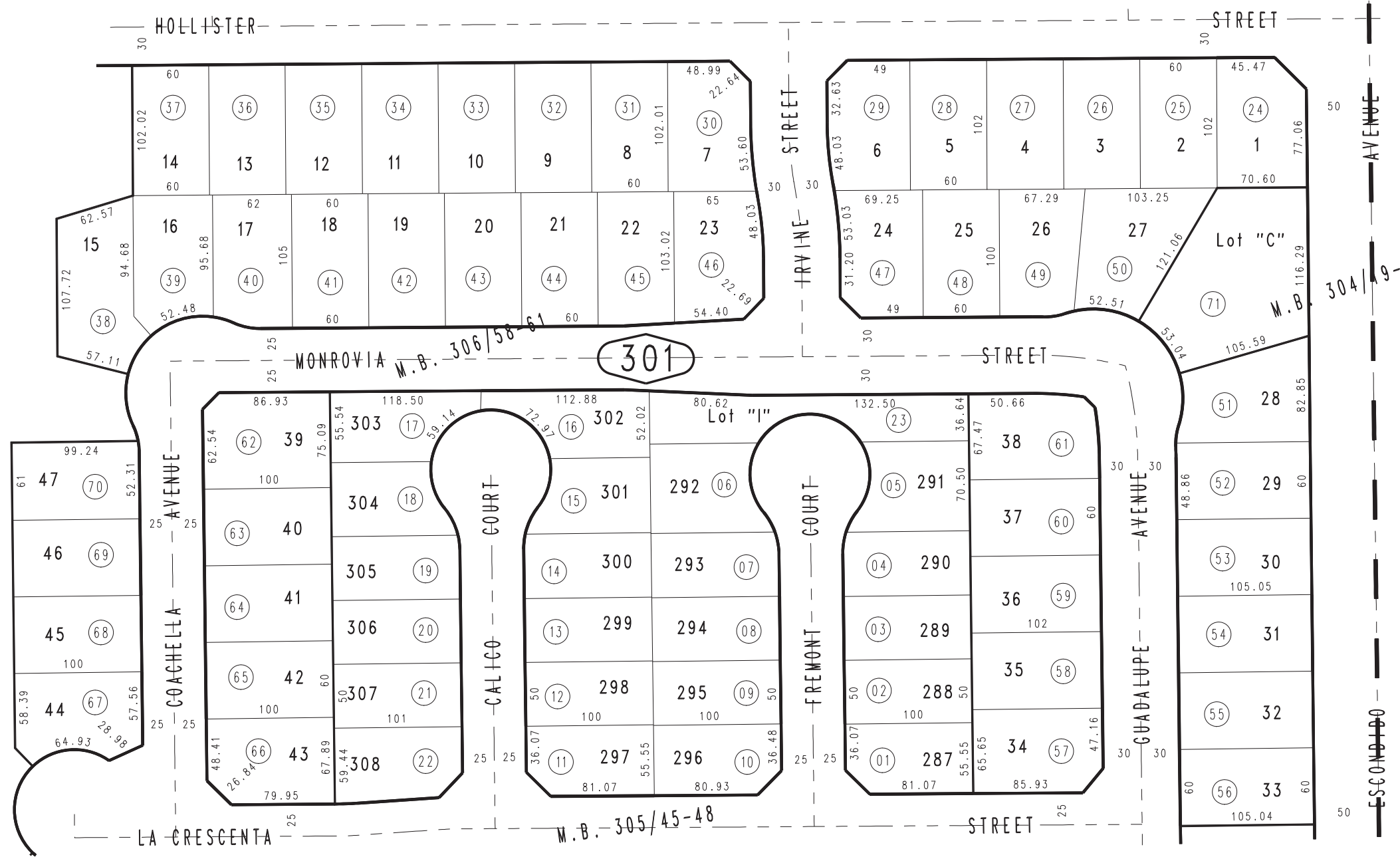
3057-30



27

05

41



29

Tract No. 16676-1, M.B. 306/58-61

May 2005 KC

Ptn. S.1/2, Sec. 23  
T.4N., R.5W.

Assessor's Map  
Book 3057 Page 30  
San Bernardino County

REVISED  
02/23/12 LH-MC