

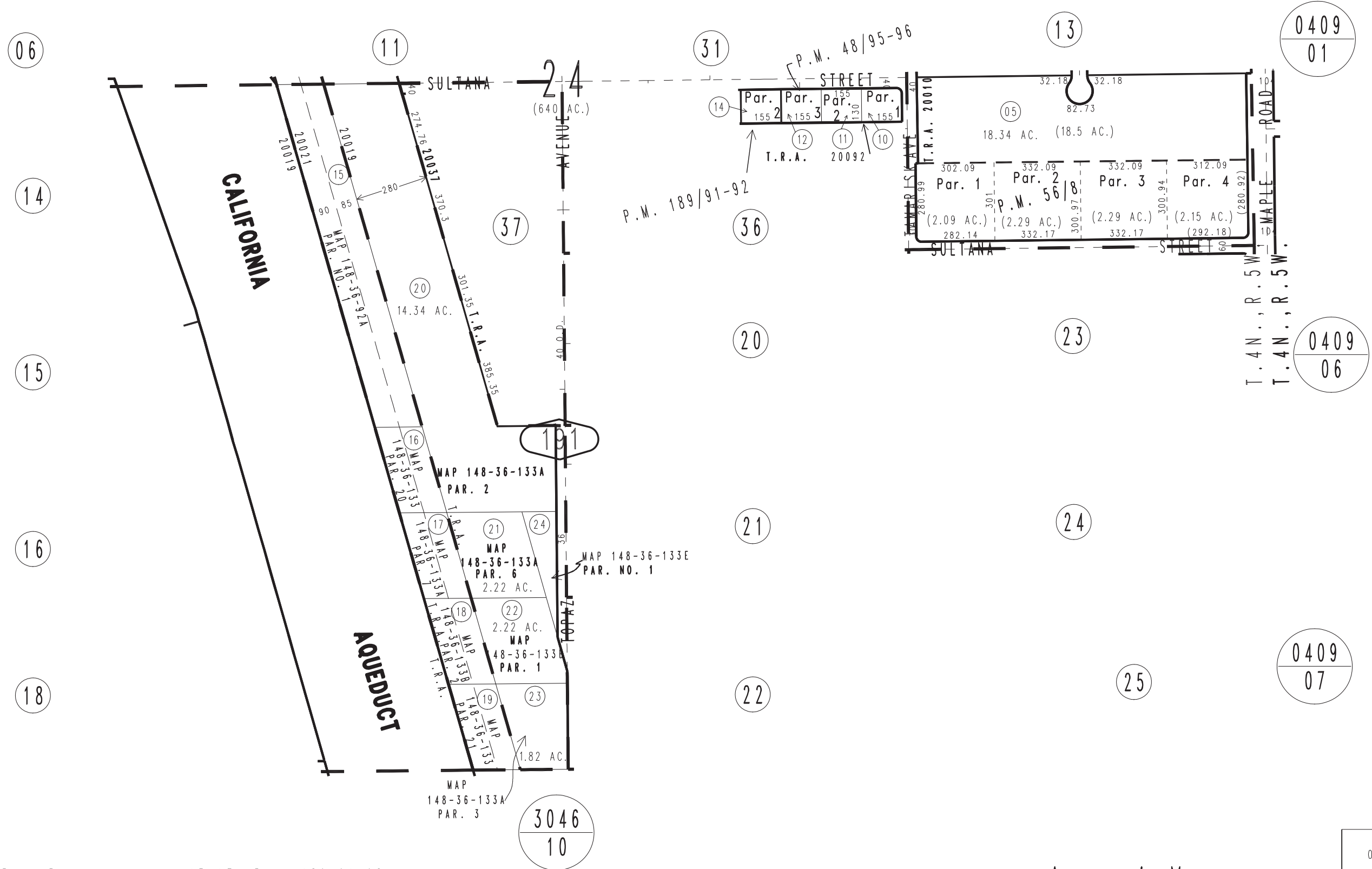
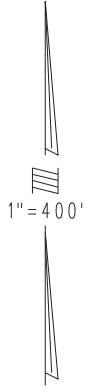
THIS MAP IS FOR THE PURPOSE
OF AD VALOREM TAXATION ONLY.



S.1/2 Sec.24, T.4N.,R.5W. S.B.B.&M.

City of Hesperia
Tax Rate Area
20019,20021
20037,20092

3057-19



Ptn. Parcel Map No. 15413, P.M. 189/91-92
Parcel Map No. 5730, P.M. 56/8
Ptn. Parcel Map No. 4633, P.M. 48/95-96

JANUARY 2005 AL

Assessor's Map
Book 3057 Page 19
San Bernardino County

REVISED
02/23/12 LH-MC