

THIS MAP IS FOR THE PURPOSE OF AD VALOREM TAXATION ONLY.

Ptn. N.W.1/4 Sec.24, T.4N.,R.5W., S.B.B.&M.

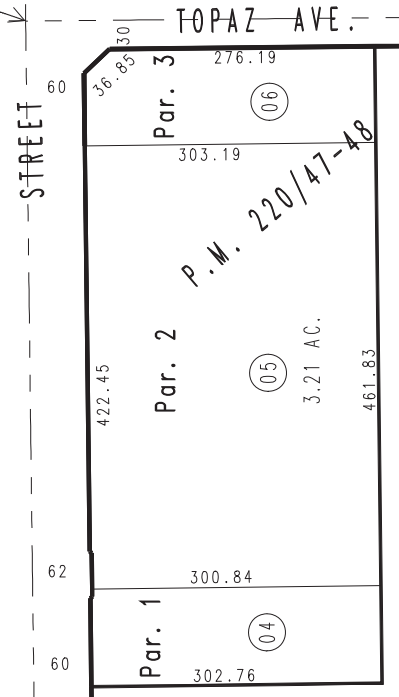
City of Hesperia  
Tax Rate Area  
20092 20095

3057-07

1"=200'



N.1/4 COR.  
SEC.24



0405  
19

