

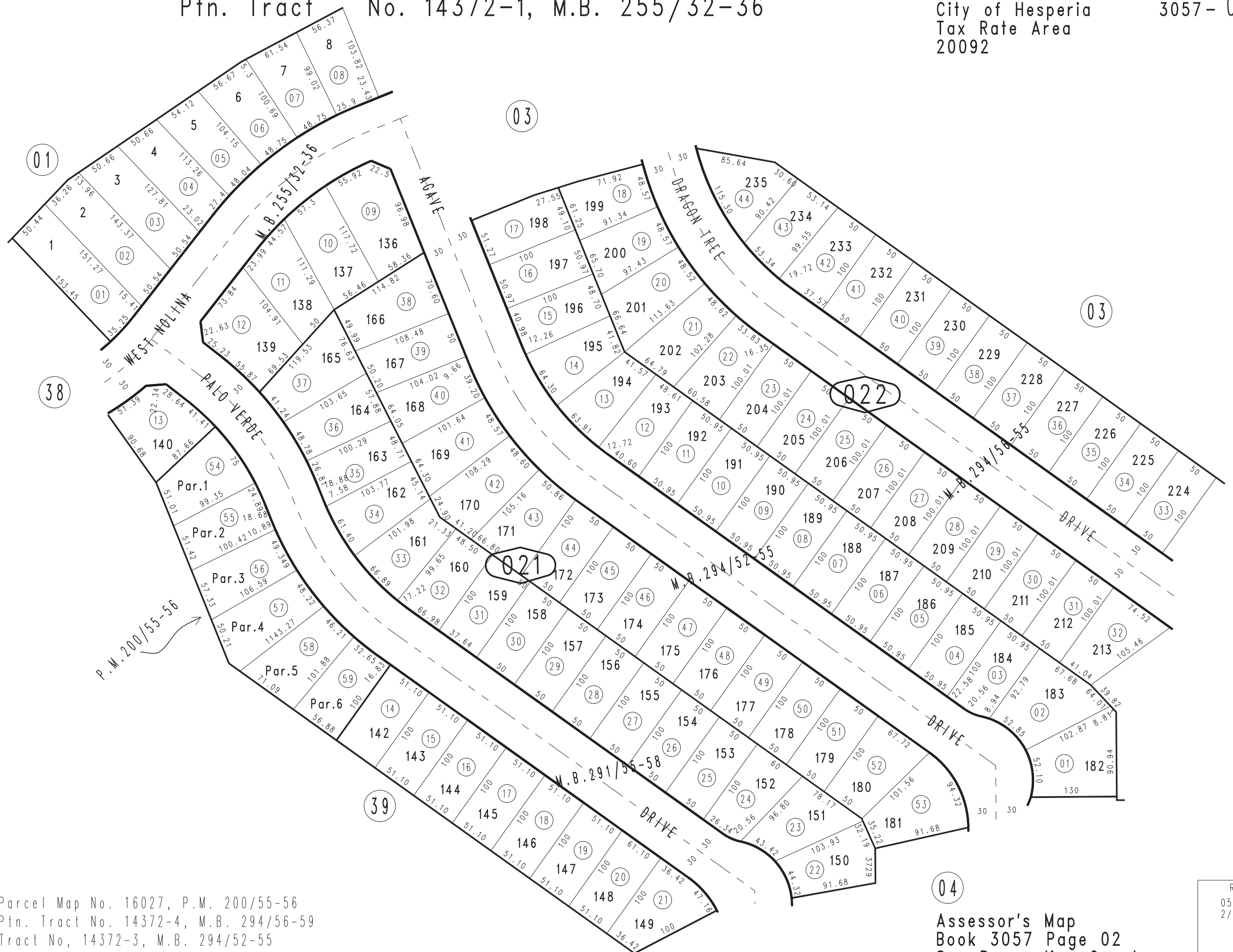
THIS MAP IS FOR THE PURPOSE
OF AD VALOREM TAXATION ONLY.



Ptn. Tract No. 14372-1, M.B. 255/32-36

City of Hesperia
Tax Rate Area
20092

3057-02



Parcel Map No. 16027, P.M. 200/55-56
 Ptn. Tract No. 14372-4, M.B. 294/56-59
 Tract No. 14372-3, M.B. 294/52-55
 Tract No. 14372-2, M.B. 291/55-58

04
 Assessor's Map
 Book 3057 Page 02
 San Bernardino County

REVISED
 05/08/06 GW
 2/23/12 LH-MC