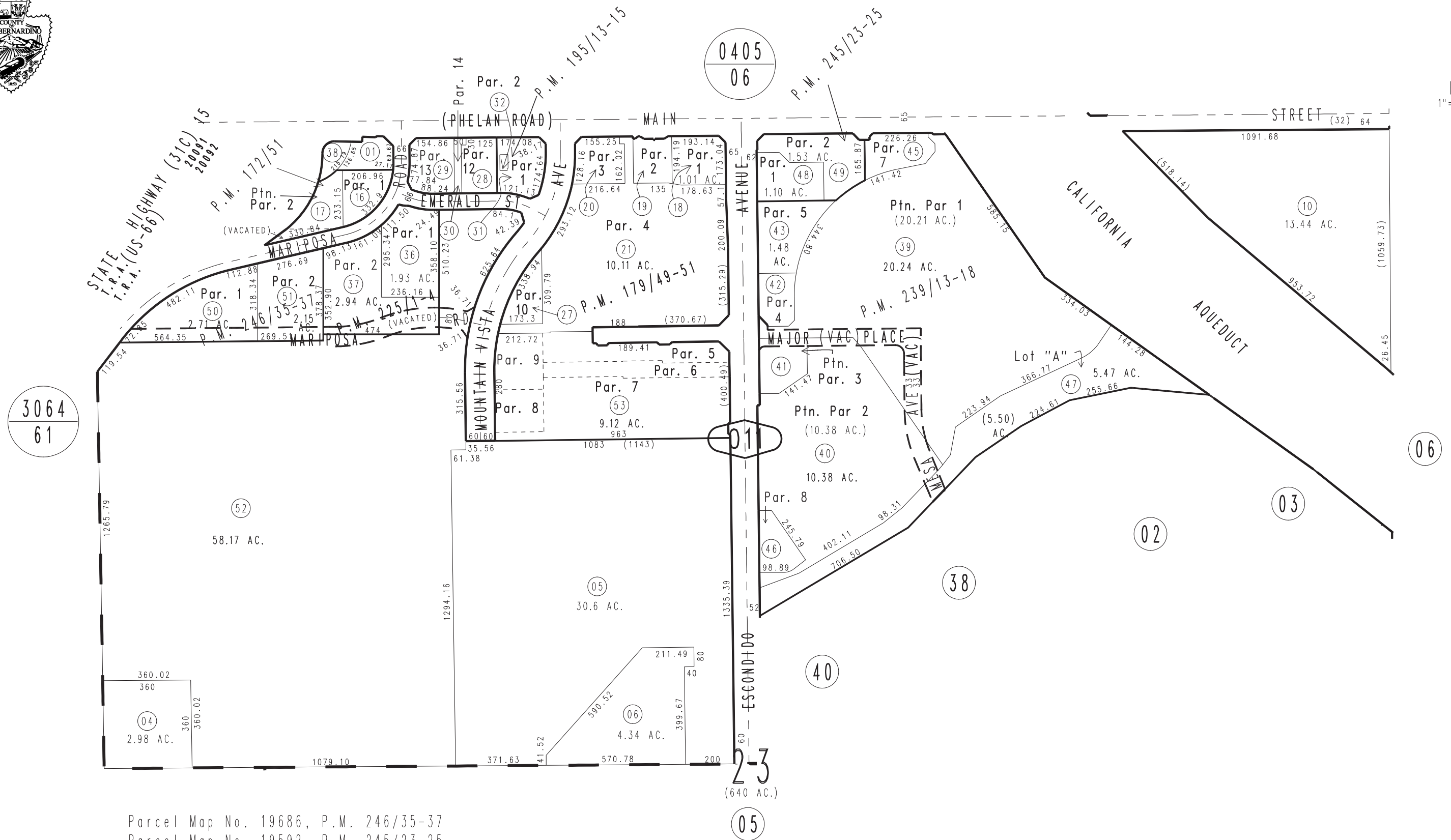


THIS MAP IS FOR THE PURPOSE
OF AD VALOREM TAXATION ONLY.

Ptn. N.1/2 Sec.23, T.4N., R.5W., S.B.B.&M.

City of Hesperia
Tax Rate Area
20091 20092

3057-01



- Parcel Map No. 19686, P.M. 246/35-37
- Parcel Map No. 19592, P.M. 245/23-25
- Parcel Map No. 18187, P.M. 238/95-99 Rerecorded P.M. 239/13-18
- Parcel Map No. 18513, P.M. 225/1-4
- Parcel Map No. 15125, P.M. 195/13-15
- Ptn. Parcel Map No. 14623, P.M. 175/37-39, Amended P.M. 179/49-51
- Parcel Map No. 14367, P.M. 172/51