

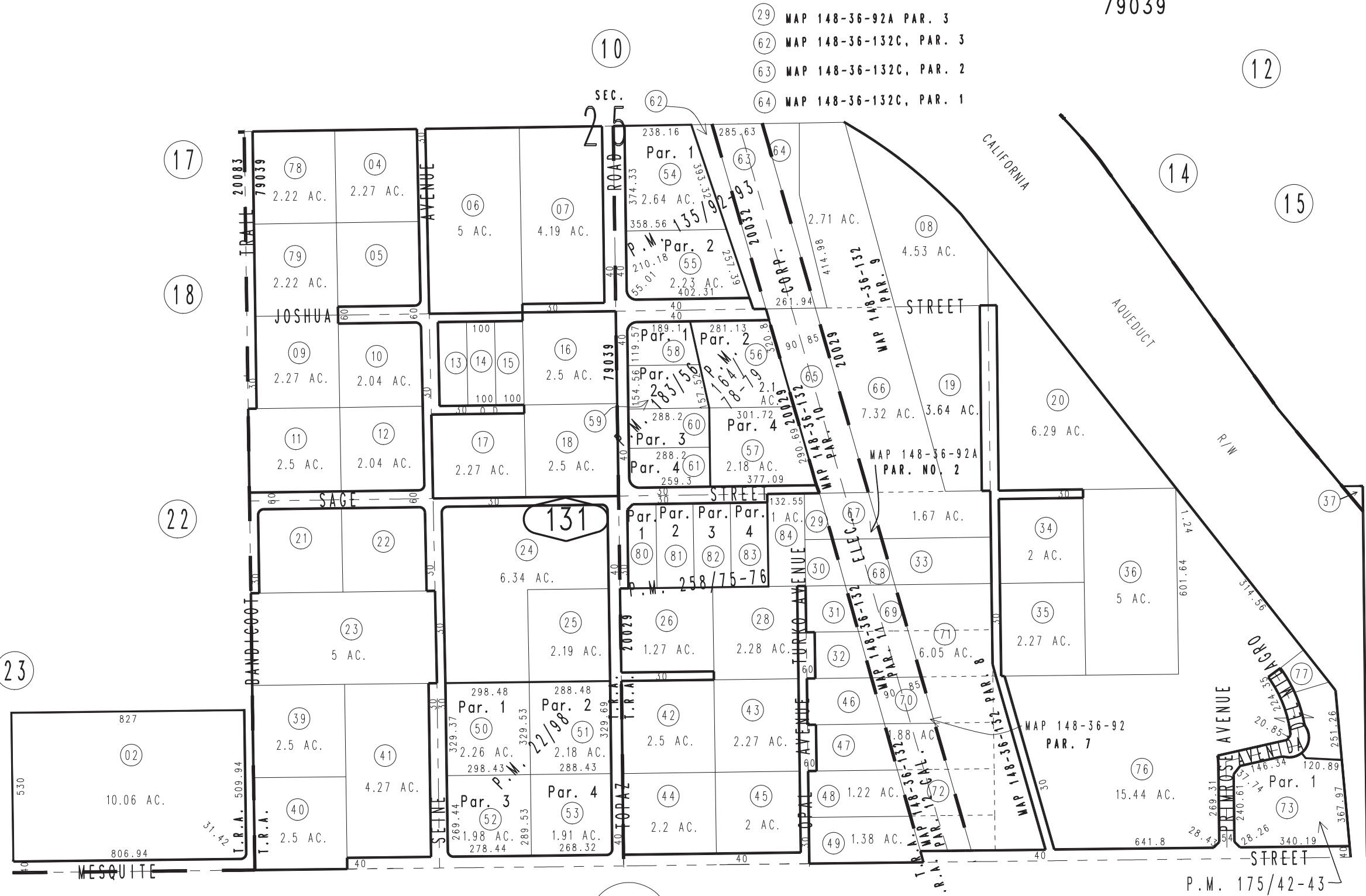
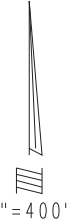
THIS MAP IS FOR THE PURPOSE OF AD VALOREM TAXATION ONLY.



Ptn. S.1/2 Sec.25, T.4N.,R.5W., S.B.B.&M.

City of Hesperia
Hesperia Unified
Tax Rate Area
20029 20032
20079 20083
79039

3046-13



Parcel Map No. 19608, P.M. 258/75-76
Parcel Map No. 15021, P.M. 183/56-57
Parcel Map No. 14566, P.M. 175/42-43
Ptn. Parcel Map No. 12125, P.M. 148/71-72, Amending Map P.M. 164/78-79
Parcel Map No. 11313, P.M. 135/92-93
Parcel Map No. 2649, P.M. 22/98

0405
37

Assessor's Map
Book 3046 Page 13
San Bernardino County

REVISED
06/10/20 KA
07/07/21 KA
10/27/21 GW
07/01/22 AP