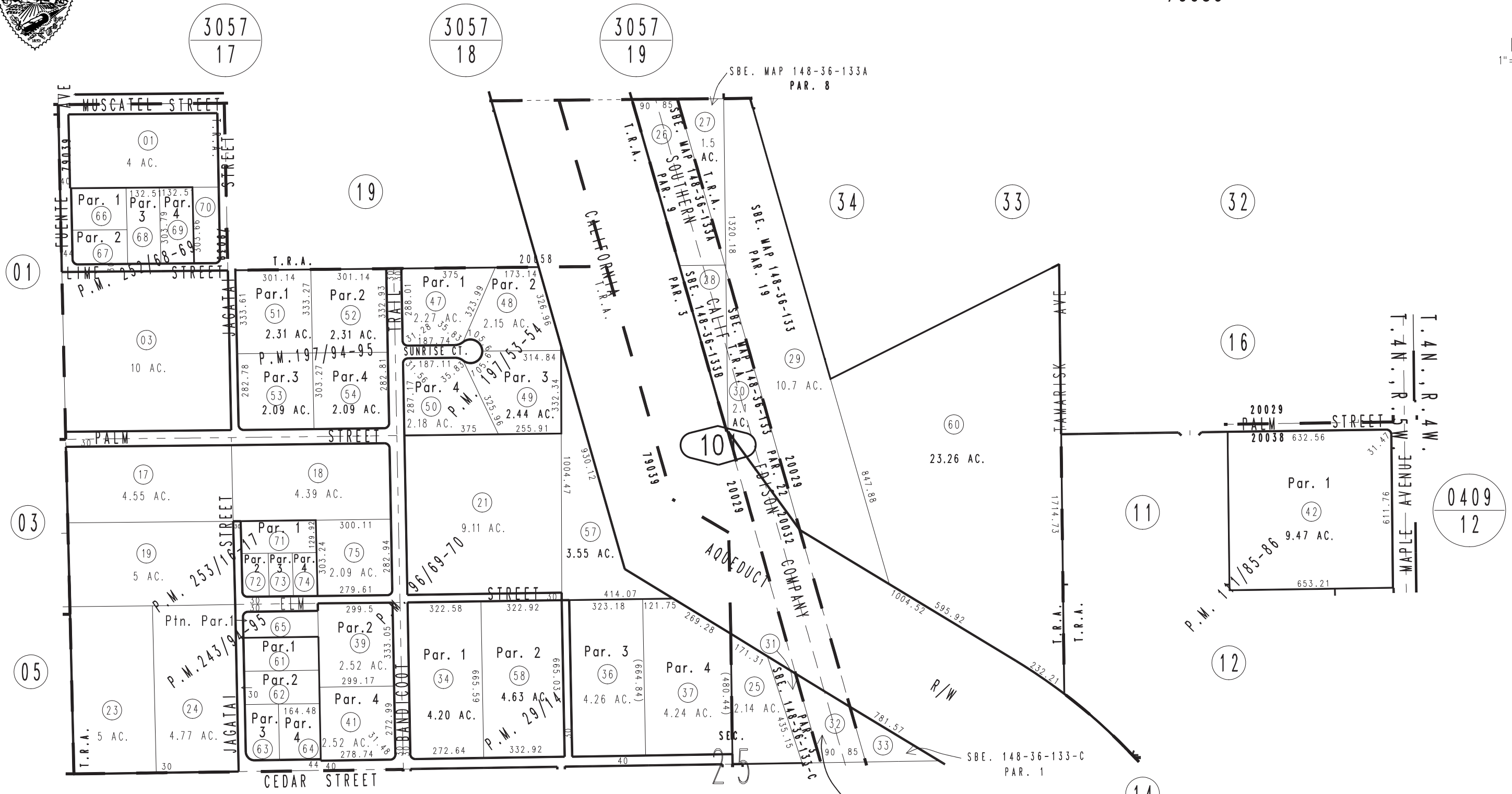


THIS MAP IS FOR THE PURPOSE OF AD VALOREM TAXATION ONLY.

N.1/2, Sec.25, T.4N.,R.5W., S.B.B.&M.

City of Hesperia
Hesperia Unified
Tax Rate Area
20029 20032
20038 20058
79039

3046-10



17 Parcel Map No. 15847, P.M. 197/94-95
 Parcel Map No. 15768, P.M. 197/53-54
 Parcel Map No. 11136, P.M. 134/61
 Ptn. Parcel Map No. 9516, P.M. 111/85-86
 Ptn. Parcel Map No. 9165, P.M. 96/69-70
 Parcel Map No. 3211, P.M. 29/14

Parcel Nap No. 18883, P.M. 253/16-17
 Parcel Map No. 19817, P.M. 252/68-69
 Parcel Map No. 19366, P.M. 243/94-95

Assessor's Map
 Book 3046 Page 10
 San Bernardino County

REVISED
 10/18/19 GW
 12/05/19 KA
 08/18/20 KC
 05/12/21 GW
 05/13/21 GW