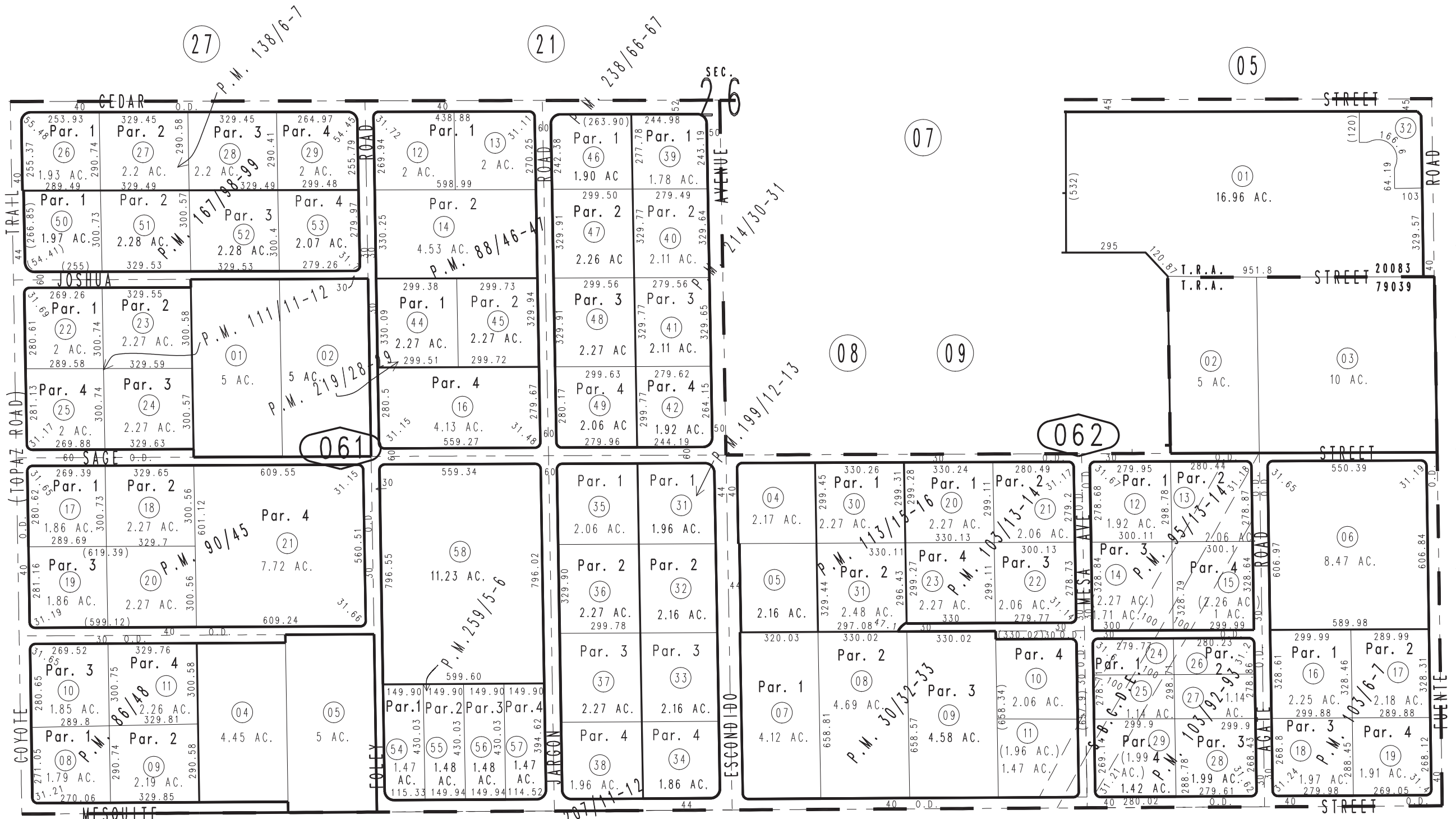
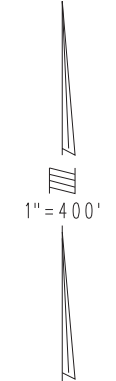


THIS MAP IS FOR THE PURPOSE OF AD VALOREM TAXATION ONLY.

S.1/2, Sec.26, T.4N.,R.5W., S.B.B.&M.

City of Hesperia
Hesperia Unified
Tax Rate Area
79039,20083

3046-06



3039
41

3039
42

0357
02

0357
50

- Parcel Map No. 10128, P.M. 111/11-12
- Parcel Map No. 9551, P.M. 103/92-93
- Parcel Map No. 9633, P.M. 103/13-14
- Parcel Map No. 9284, P.M. 103/6-7
- Parcel Map No. 8963, P.M. 95/13-14
- Parcel Map No. 8630, P.M. 90/45
- Parcel Map No. 8504, P.M. 88/46-47
- Parcel Map No. 8328, P.M. 86/48
- Parcel Map No. 3245, P.M. 30/32-33

- Parcel Map No. 16266, P.M. 207/11-12
- Parcel Map No. 15832, P.M. 199/12-13
- Parcel Map No. 14177, P.M. 167/98-99
- Parcel Map No. 11964, P.M. 138/6-7
- Parcel Map No. 10222, P.M. 113/15-16

- Parcel Map No. 20239, P.M. 259/5-6
- Parcel Map No. 18487, P.M. 238/66-67
- Parcel Map No. 16992, P.M. 219/28-29
- Parcel Map No. 16709, P.M. 214/30-31

Assessor's Map
Book 3046 Page 06
San Bernardino County