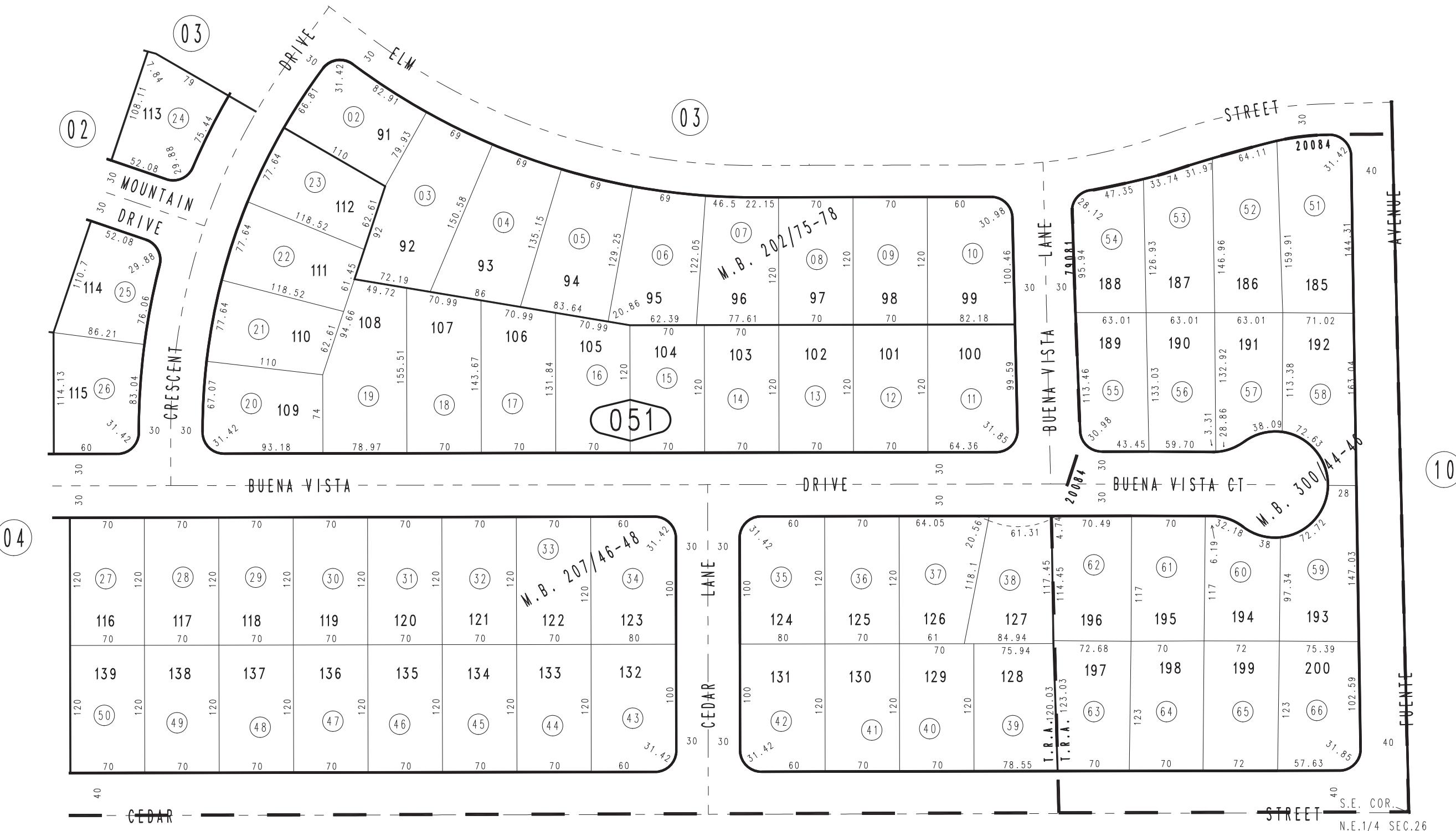


THIS MAP IS FOR THE PURPOSE OF AD VALOREM TAXATION ONLY.

Ptn. N.E.1/4 Sec.26, T.4N.,R.5W. S.B.M.

City of Hesperia
Hesperia Unified
Tax Rate Area
79081,20084

3046-05



JANUARY 2005 AL

Tract No. 13076-6, M.B. 300/44-46
Tract No. 11954-3, M.B. 207/46-48
Ptn. Tract No. 11954-2, M.B. 202/75-78

Assessor's Map
Book 3046 Page 05
San Bernardino County

REVISED
03/31/09 RU