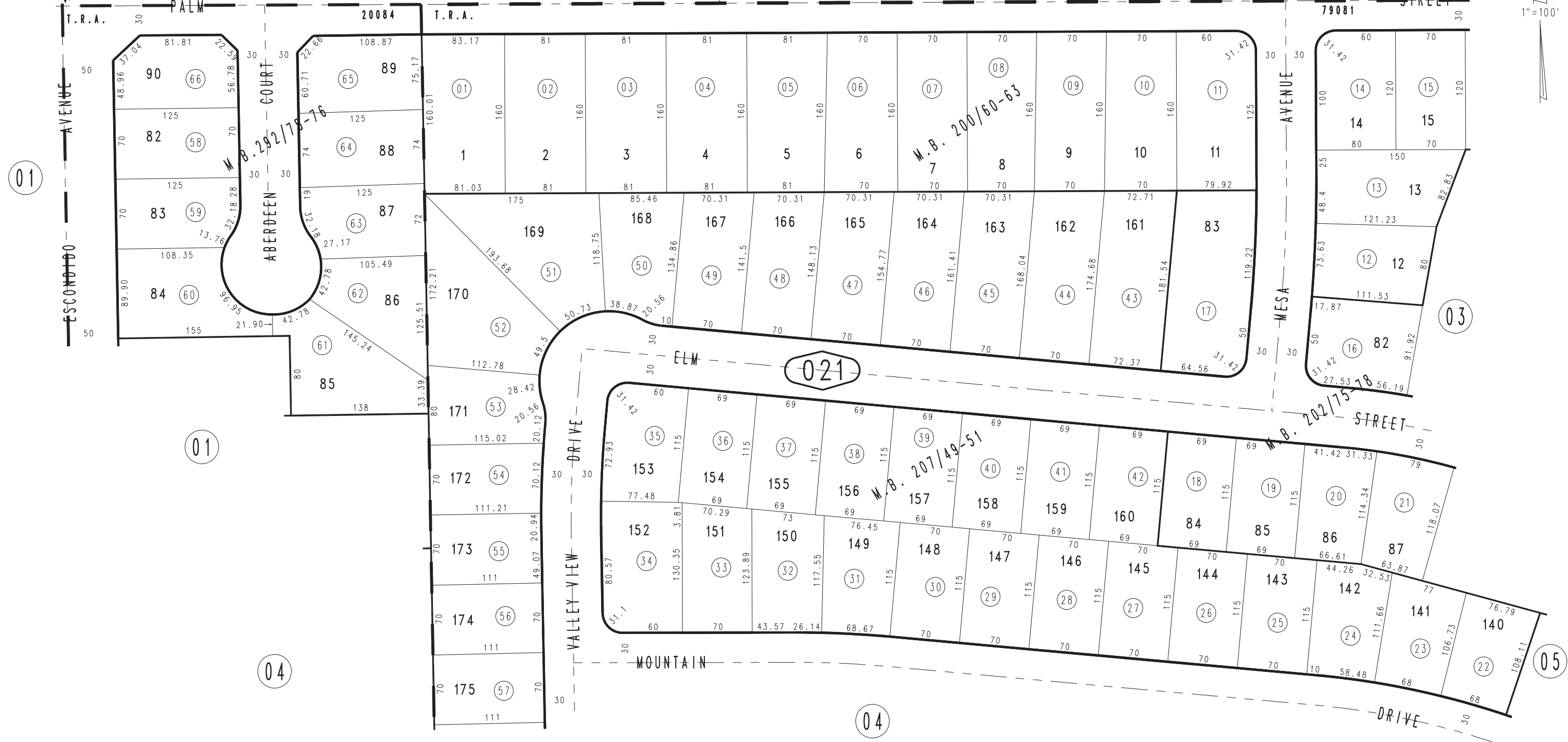


THIS MAP IS FOR THE PURPOSE OF AD VALOREM TAXATION ONLY.

Ptn. Tract No. 11954-1, M.B. 200/60-63

City of Hesperia  
Hesperia Unified  
Tax Rate Area  
79081 20084

3046-02



Tract No. 13076-4, M.B. 292/75-76  
Ptn. Tract No. 11954-4, M.B. 207/49-51  
Ptn. Tract No. 11954-2, M.B. 202/75-78

JANUARY 2005 AL

Ptn. N.E. 1/4, Sec. 26  
T.4 N., R.5 W.

Assessor's Map  
Book 3046 Page 02  
San Bernardino County

REVISED