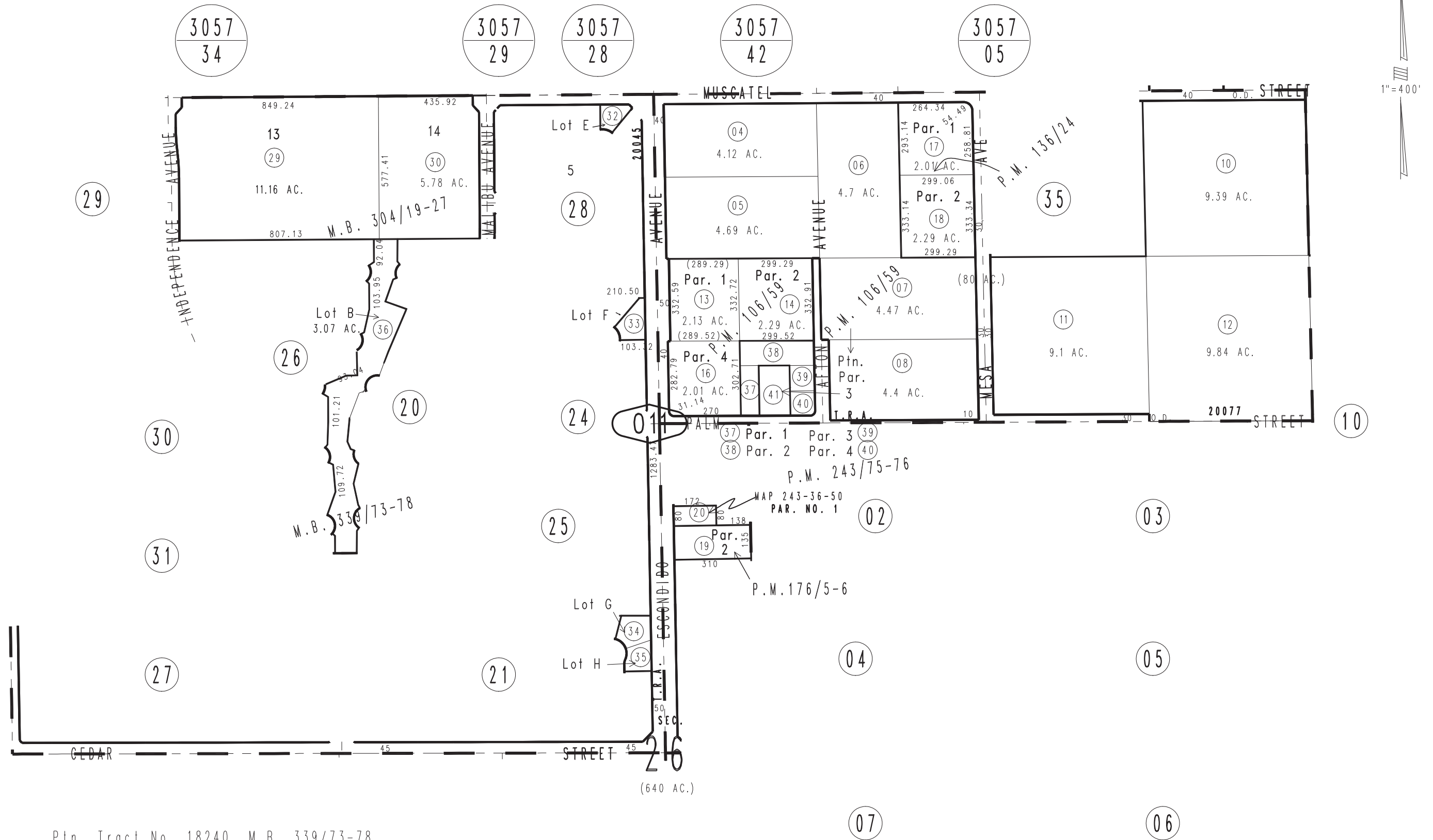


THIS MAP IS FOR THE PURPOSE  
OF AD VALOREM TAXATION ONLY.

N.1/2, Sec.26, T.4N.,R.5W., S.B.B.&M.

City of Hesperia  
Tax Rate Area  
20045 20077 20084

3046-01



Ptn. Tract No. 18240, M.B. 339/73-78  
Ptn. Tract No. 17012, M.B. 304/19-27  
Parcel Map No. 18783, P.M. 243/75-76  
Ptn. Parcel Map No. 14679, P.M. 176/5-6  
Parcel Map No. 11822, P.M. 136/24  
Ptn. Parcel Map No. 9866, P.M. 106/59

Assessor's Map  
Book 3046 Page 01  
San Bernardino County