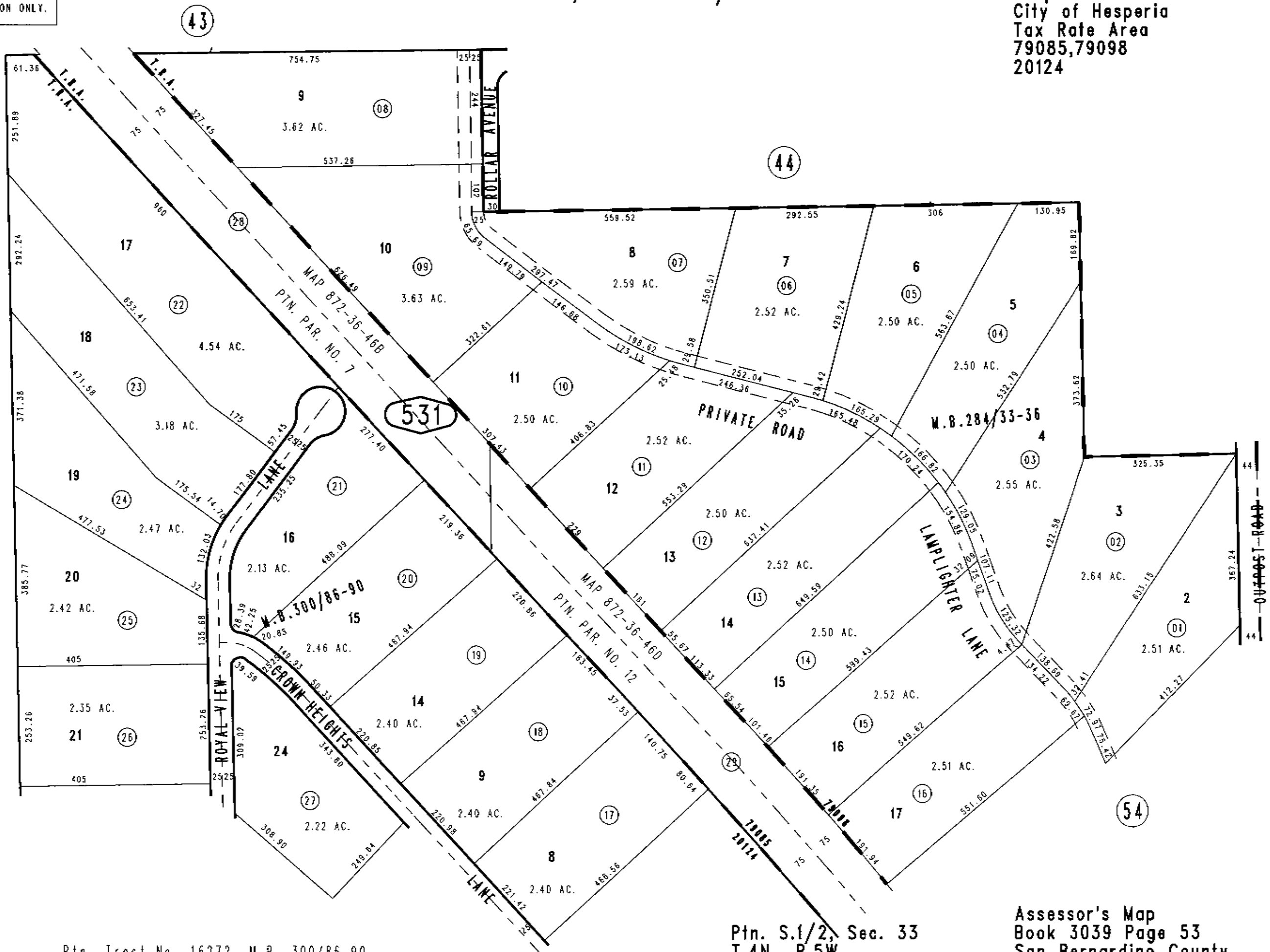
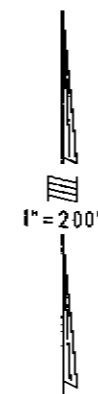


THIS MAP IS FOR THE PURPOSE OF AD VALOREM TAXATION ONLY.

Ptn. Tract No. 15999-1, M.B. 284/33-36

Hesperia Unified
City of Hesperia
Tax Rate Area
79085,79098
20124

3039-53



MAY 2002

Ptn. Tract No. 16272, M.B. 300/86-90

Ptn. S.1/2, Sec. 33
T.4N., R.5W.

Assessor's Map
Book 3039 Page 53
San Bernardino County

REVISED
03/13/03 RM
02/09/05 KMP
06/09/05 GW
07/13/05 KC