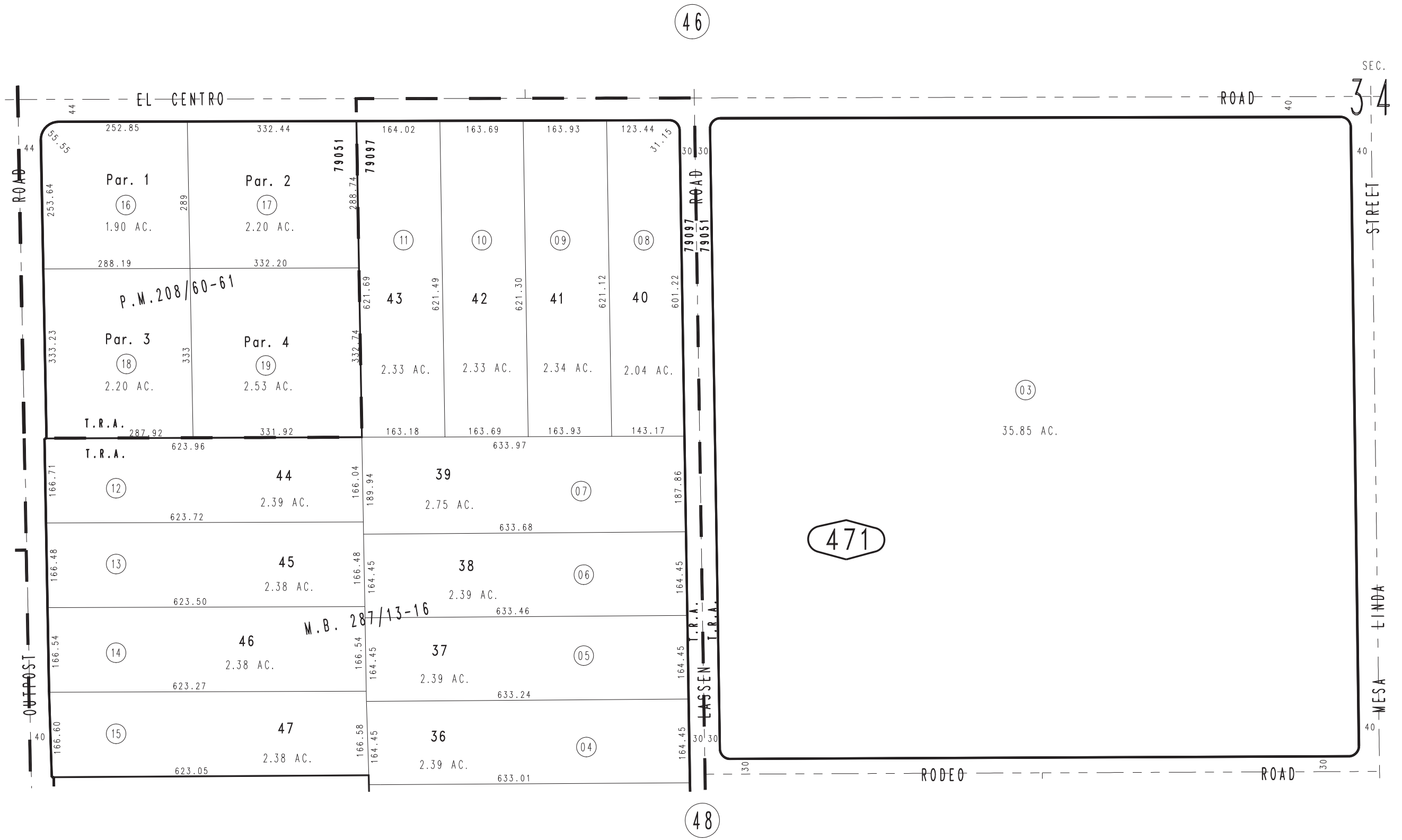
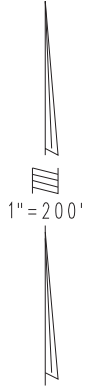


THIS MAP IS FOR THE PURPOSE  
OF AD VALOREM TAXATION ONLY.

N.1/2 S.W.1/4 Sec. 34, T.4N., R.5W., S.B.M.

Hesperia  
Tax Rate Area  
79051 79097

3039-47



JULY 1996

Parcel Map No. 16385, P.M. 208/60-61  
Ptn. Tract No. 15999, M.B. 287/13-16

Assessor's Map  
Book 3039 Page 47  
San Bernardino County

REVISED  
08/17/21 RU-MC