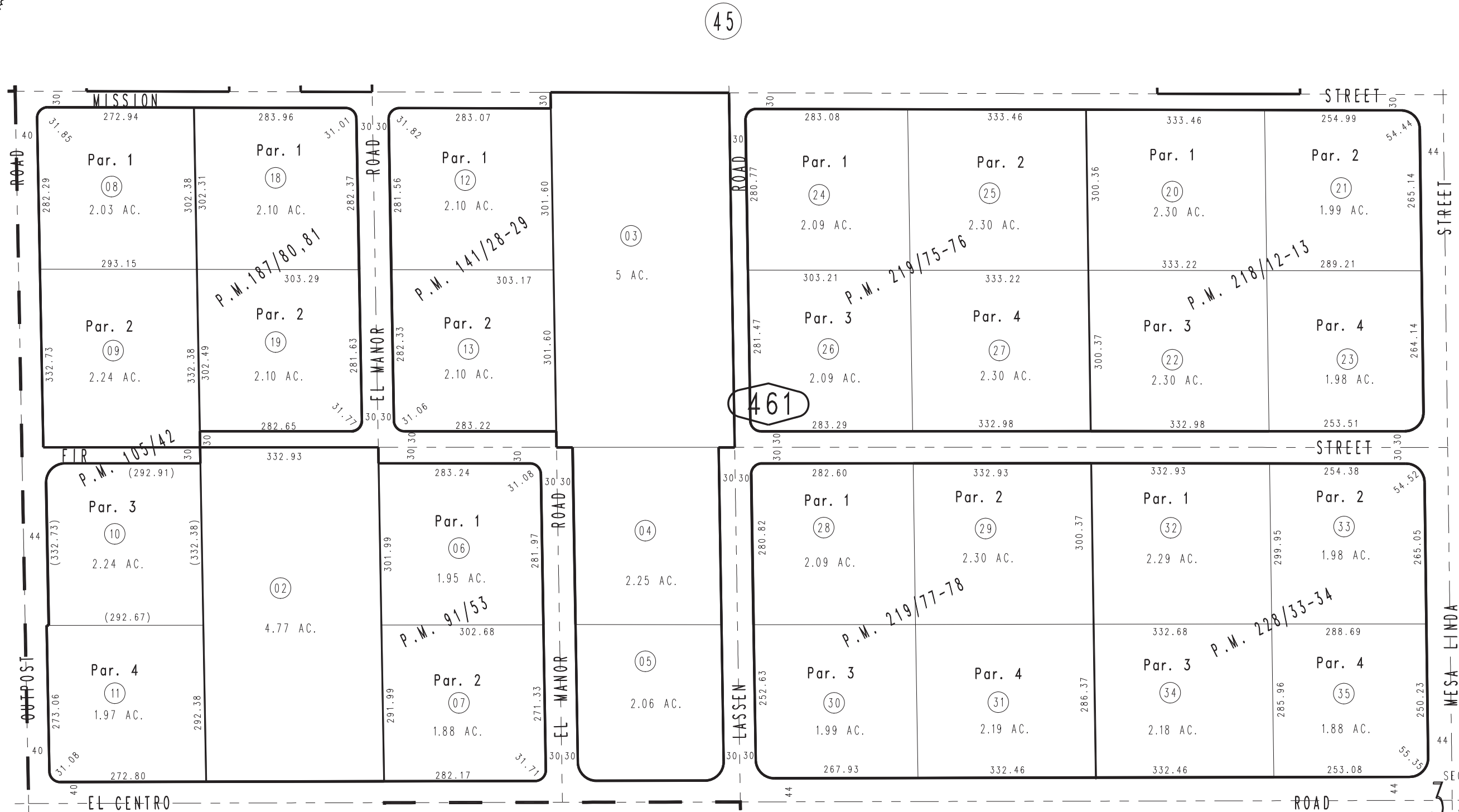


THIS MAP IS FOR THE PURPOSE OF AD VALOREM TAXATION ONLY.

S.1/2 N.W.1/4 Sec. 34, T.4N., R.5W., S.B.M.

Hesperia Tax Rate Area 79051

3039-46



- Parcel Map No. 16967, P.M. 219/77-78
- Parcel Map No. 16958, P.M. 219/75-76
- Parcel Map No. 16953, P.M. 218/12-13
- Parcel Map No. 15283, P.M. 187/80-81
- Ptn. Parcel Map No. 12459, P.M. 142/96-97
- Parcel Map No. 11995, P.M. 141/28-29
- Parcel Map No. 9842, P.M. 105/42
- Parcel Map No. 8718, P.M. 91/53

Parcel Map No. 17382, P.M. 228/33-34

Assessor's Map Book 3039 Page 46 San Bernardino County

REVISED 04/07/08 KA 06/02/08 KA 03/02/10 LH