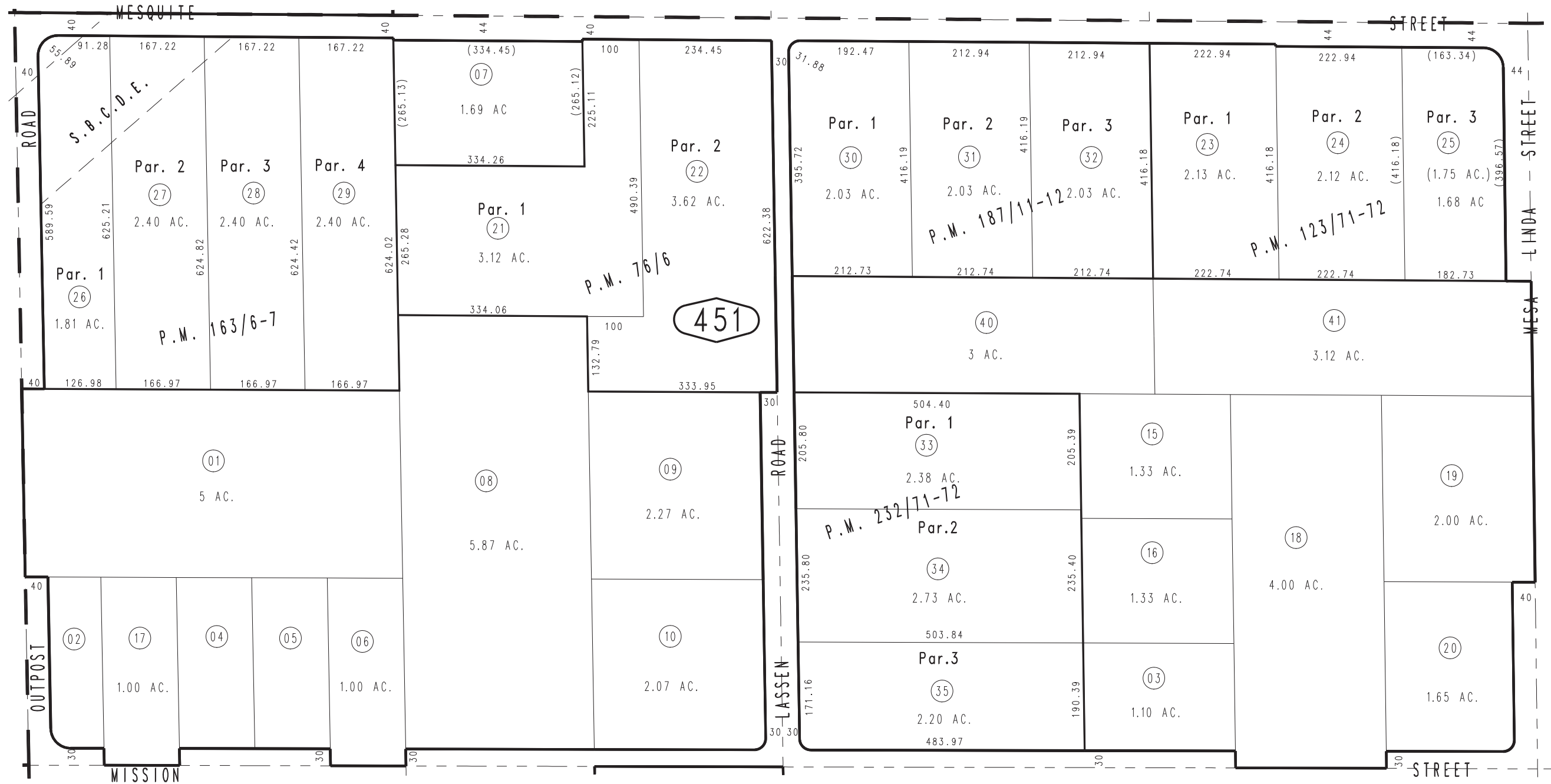


THIS MAP IS FOR THE PURPOSE OF AD VALOREM TAXATION ONLY.

N.1/2 N.W.1/4 Sec. 34, T.4N., R.5W., S.B.M.

Hesperia
Tax Rate Area
79051

3039-45



43

49

38

46

Parcel Map No. 18436, P.M. 232/71-72
 Parcel Map No. 15022, P.M. 187/11-12
 Parcel Map No. 12623, P.M. 163/6-7
 Parcel Map No. 10969, P.M. 123/71-72
 Parcel Map No. 7581, P.M. 76/6

JULY 1996

Assessor's Map
 Book 3039 Page 45
 San Bernardino County

REVISED
 09/02/21 KA