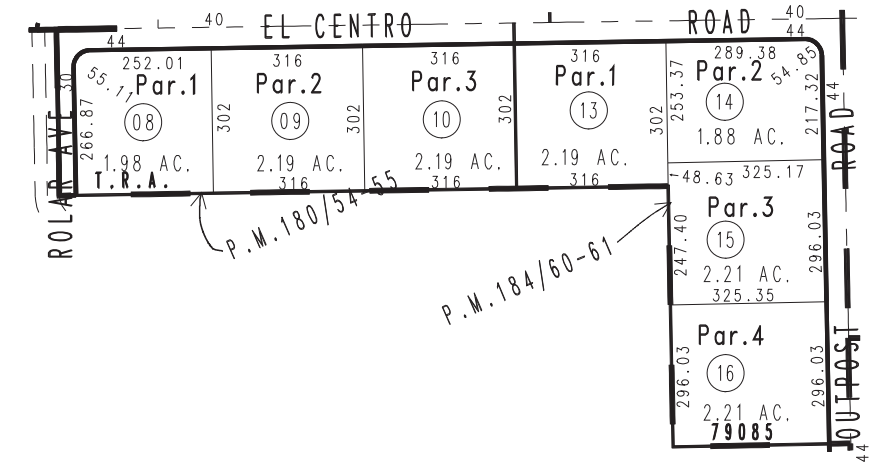
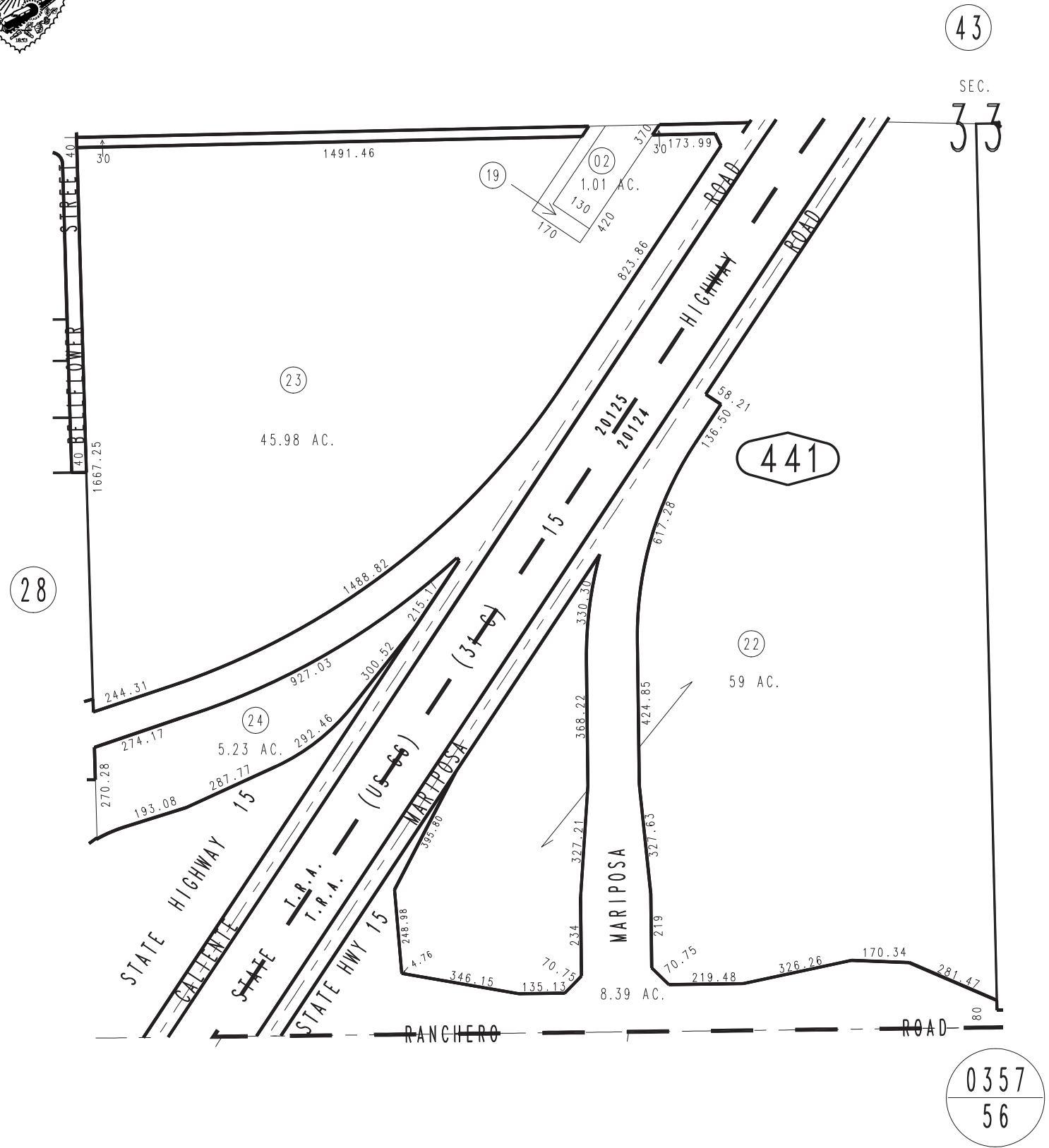


THIS MAP IS FOR THE PURPOSE
OF AD VALOREM TAXATION ONLY.

S.1/2 Sec. 33, T.4N., R.5W., S.B.M.

Hesperia Unified
City of Hesperia
Tax Rate Area
20124, 20125
79085

3039-44



JULY 1996

Parcel Map No. 14983, P.M. 184/60-61
Ptn. Parcel Map No. 14604, P.M. 180/54-55

Assessor's Map
Book 3039 Page 44
San Bernardino County

REVISED
01/02/20 KA
12/28/22 KA