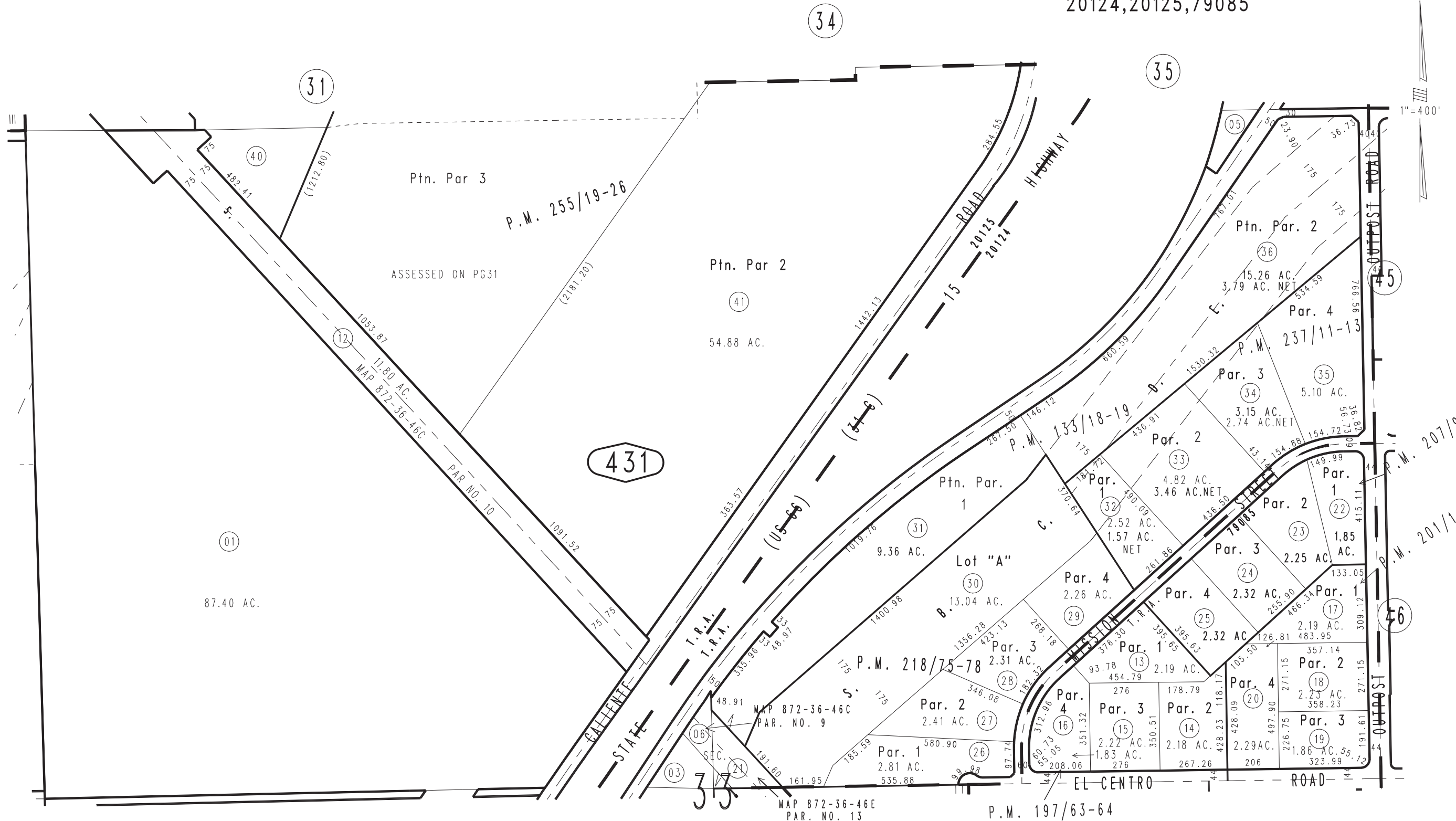


THIS MAP IS FOR THE PURPOSE OF AD VALOREM TAXATION ONLY.

N.1/2 Sec. 33, T.4N., R.5W., S.B.M.

Hesperia Unified City of Hesperia Tax Rate Area 20124,20125,79085

3039-43



1"=400'

Ptn. Parcel Map No. 20159, P.M. 255/19-26  
Parcel Map No. 16850, P.M. 237/11-13  
Parcel Map No. 16987, P.M. 218/75-78  
Parcel Map No. 16666, P.M. 207/91-92  
Parcel Map No. 15623, P.M. 201/1-2  
Parcel Map No. 15775, P.M. 197/63-64  
Ptn. Parcel Map No. 11656, P.M. 133/18-19

JULY 1996

Assessor's Map Book 3039 Page 43 San Bernardino County

REVISED  
11/18/20 KC  
03/31/22 GW-MC  
04/01/22 GW  
07/14/22 KC