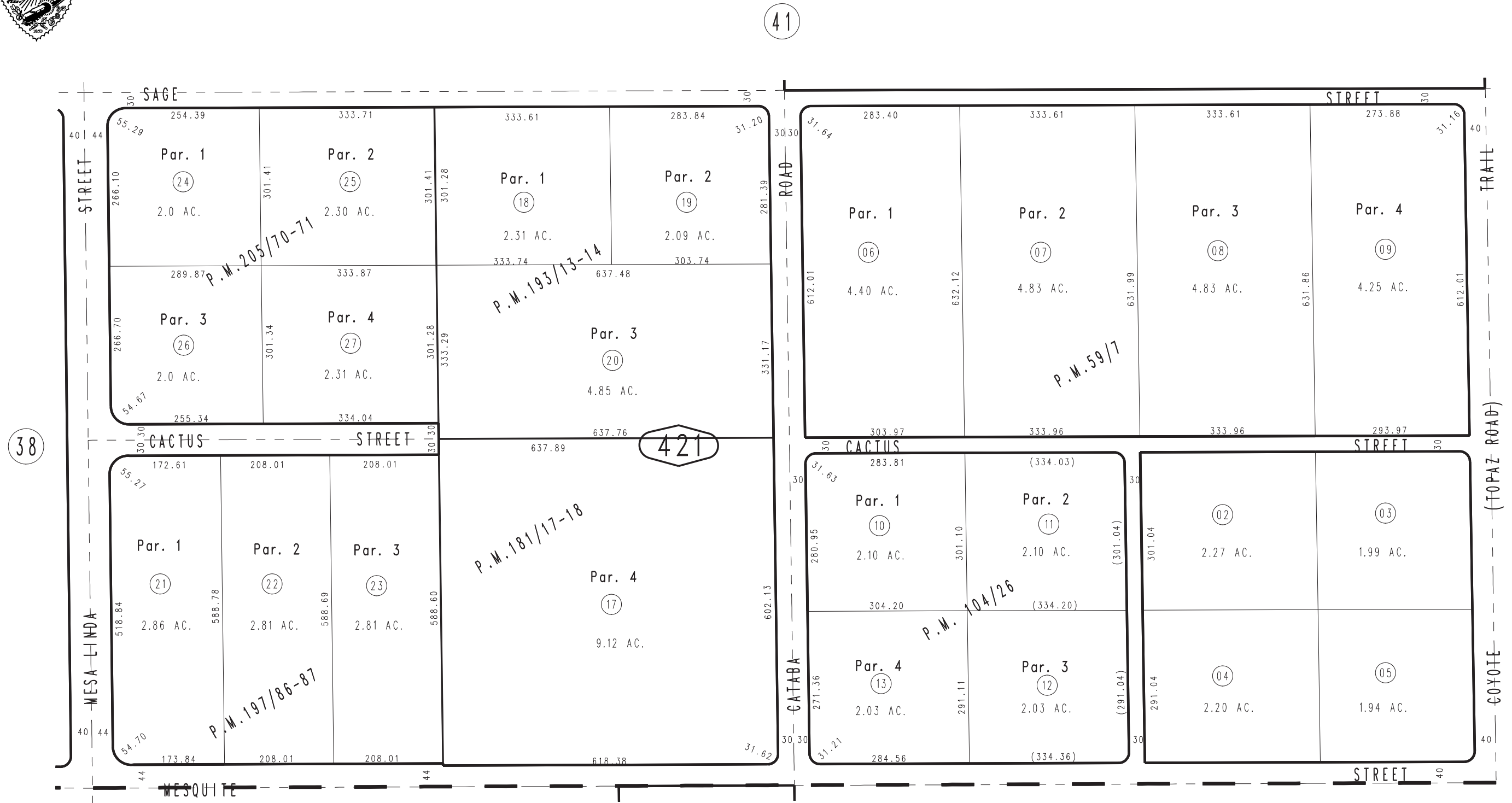


THIS MAP IS FOR THE PURPOSE OF AD VALOREM TAXATION ONLY.

S.1/2 S.E.1/4 Sec. 27, T.4N., R.5W., S.B.M.

Hesperia Tax Rate Area 79039

3039-42



3046  
06

- Parcel Map No. 16254, P.M. 205/70-71
- Parcel Map No. 15380, P.M. 197/86-87
- Parcel Map No. 15473, P.M. 193/13-14
- Pln. Parcel Map No. 14778, P.M. 181/17-18
- Parcel Map No. 9685, P.M. 104/26
- Parcel Map No. 4346, P.M. 59/7

JULY 1996

Assessor's Map  
Book 3039 Page 42  
San Bernardino County

REVISED  
03/02/10 LH