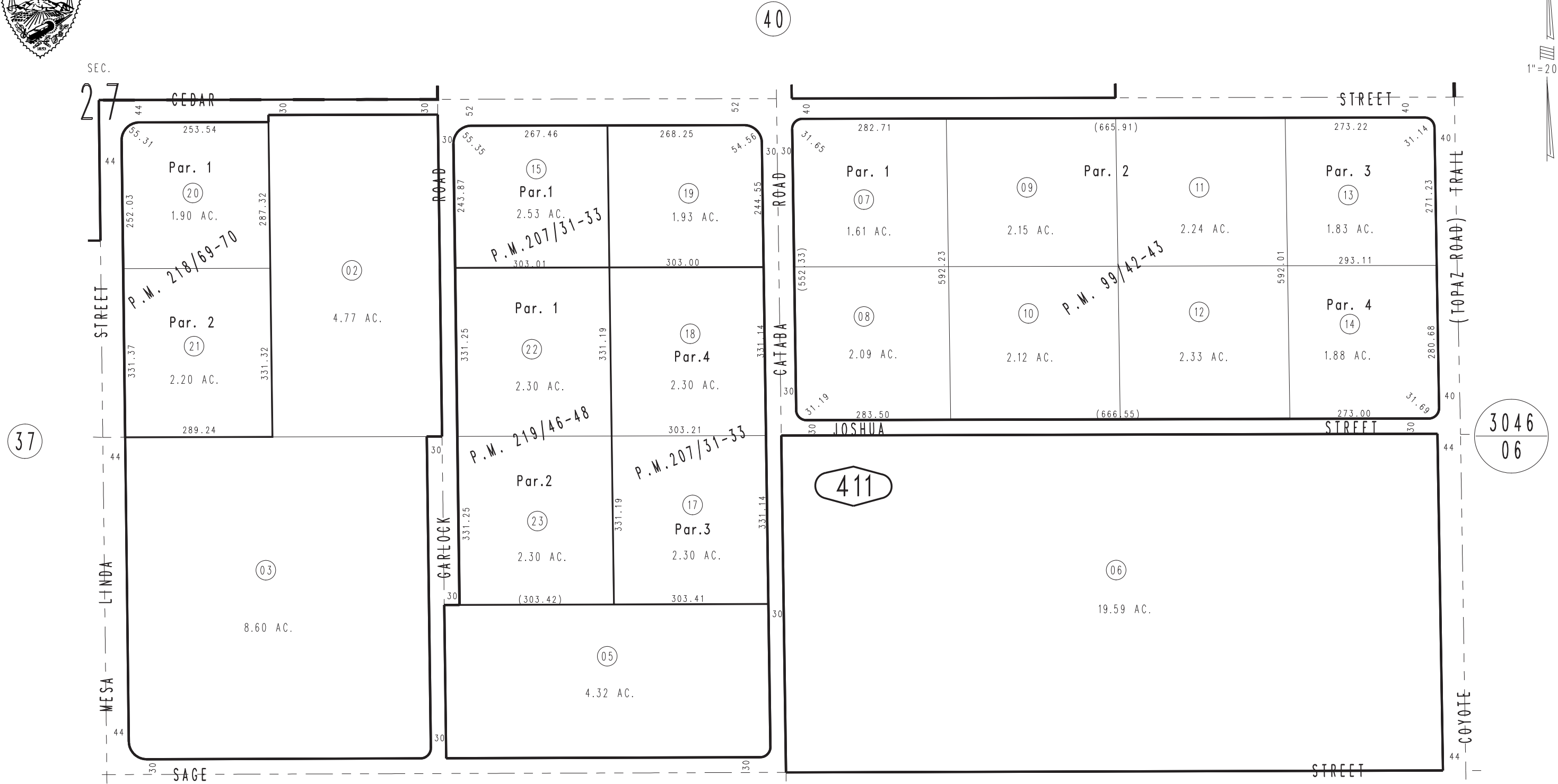


THIS MAP IS FOR THE PURPOSE
OF AD VALOREM TAXATION ONLY.

N.1/2 S.E.1/4 Sec. 27, T.4N., R.5W., S.B.M.

Hesperia
Tax Rate Area
79039

3039-41



Parcel Map No. 18042, P.M. 219/46-48
 Parcel Map No. 17089, P.M. 218/69-70
 Parcel Map No. 16458, P.M. 207/31-33
 Parcel Map No. 9209, P.M. 99/42-43

JULY 1996

Assessor's Map
 Book 3039 Page 41
 San Bernardino County

REVISED
 03/02/10 LH
 12/14/11 RU