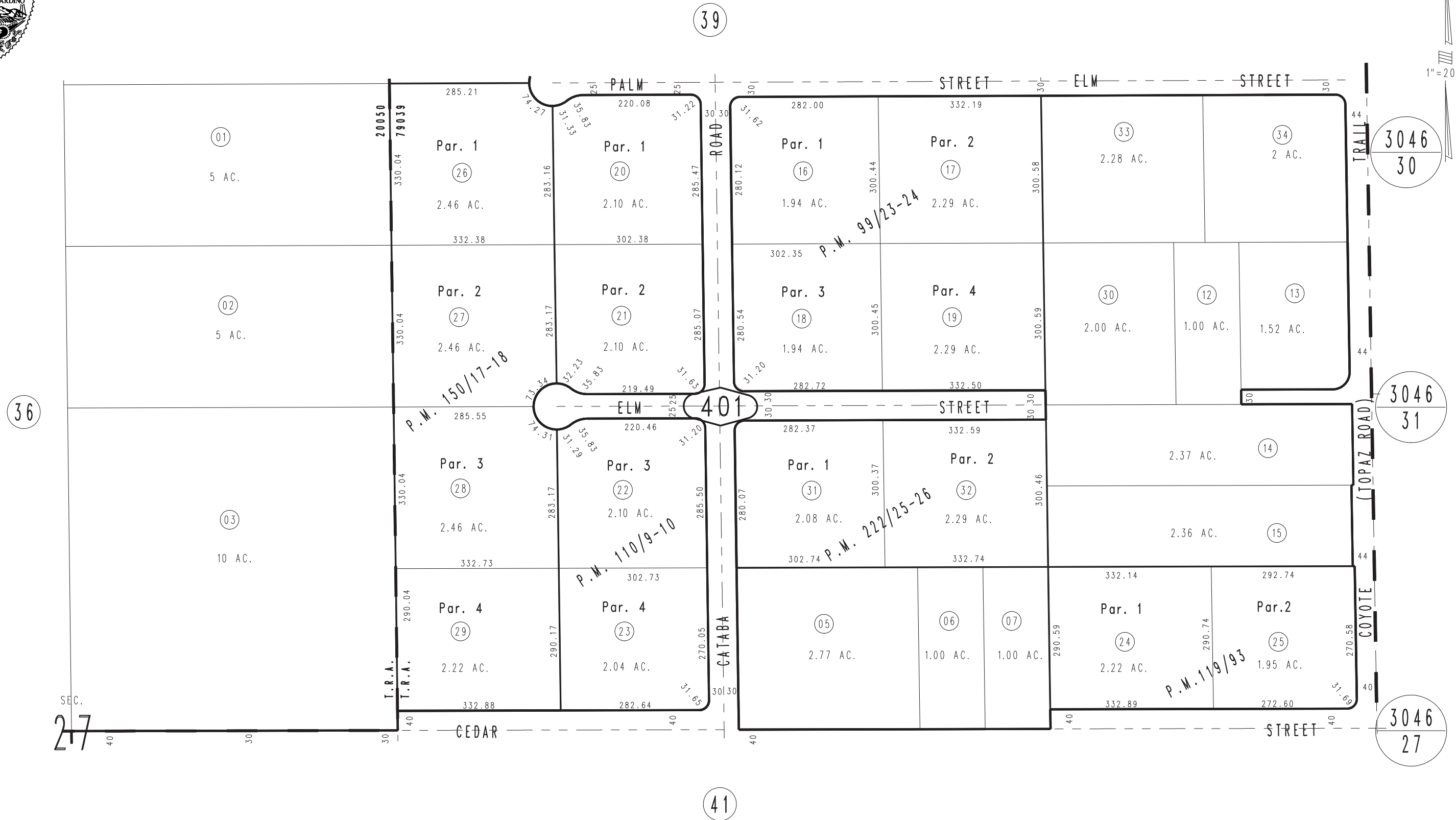


THIS MAP IS FOR THE PURPOSE  
OF AD VALOREM TAXATION ONLY.

S.1/2 N.E.1/4 Sec. 27, T.4N., R.5W., S.B.M.

City of Hesperia  
Hesperia  
Tax Rate Area  
20050,79039

3039-40



Parcel Map NO. 17232, P.M. 222/25-26  
 Parcel Map NO. 12488, P.M. 150/17-18  
 Parcel Map No. 10803, P.M. 119/93  
 Parcel Map No. 10059, P.M. 110/9-10  
 Parcel Map No. 9357, P.M. 99/23-24

JULY 1996

Assessor's Map  
Book 3039 Page 40  
San Bernardino County

REVISED  
03/03/16 RU  
03/15/16 RU