

THIS MAP IS FOR THE PURPOSE OF AD VALOREM TAXATION ONLY.

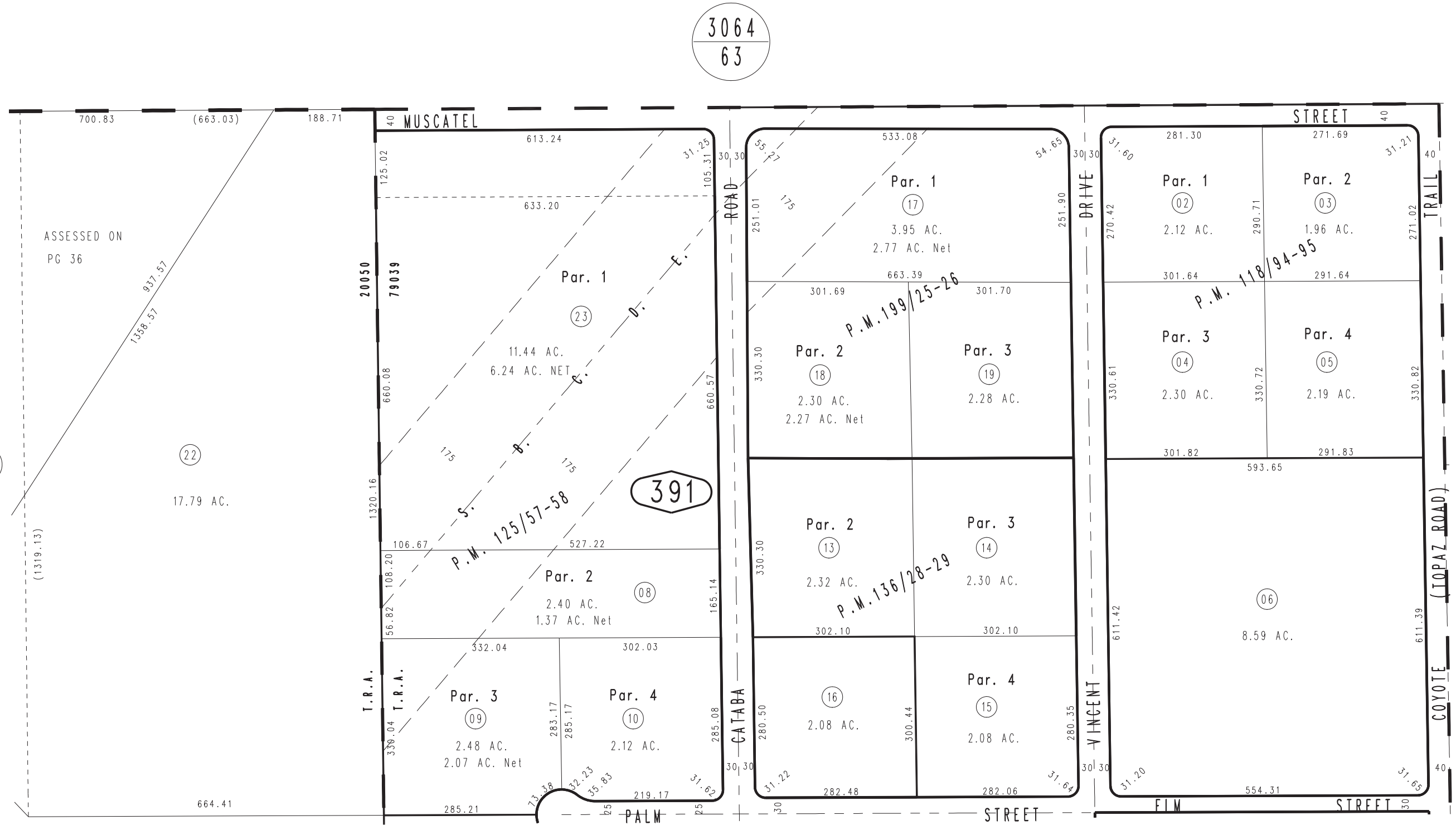
N.1/2 N.E.1/4 Sec. 27, T.4N., R.5W., S.B.M.

City of Hesperia
Hesperia
Tax Rate Area
20050,79039

3039-39



1"=200'



3046
29

3046
30

Parcel Map No. 15725, P.M. 199/25-26
Parcel Map No. 11773, P.M. 136/28-29
Parcel MAP No. 11201, P.M. 125/57-58
Parcel Map No. 10796, P.M. 118/94-95

Assessor's Map
Book 3039 Page 39
San Bernardino County

REVISED
03/25/08 GW
03/26/08 GW
03/02/10 LH
08/02/10 KA

JULY 1996