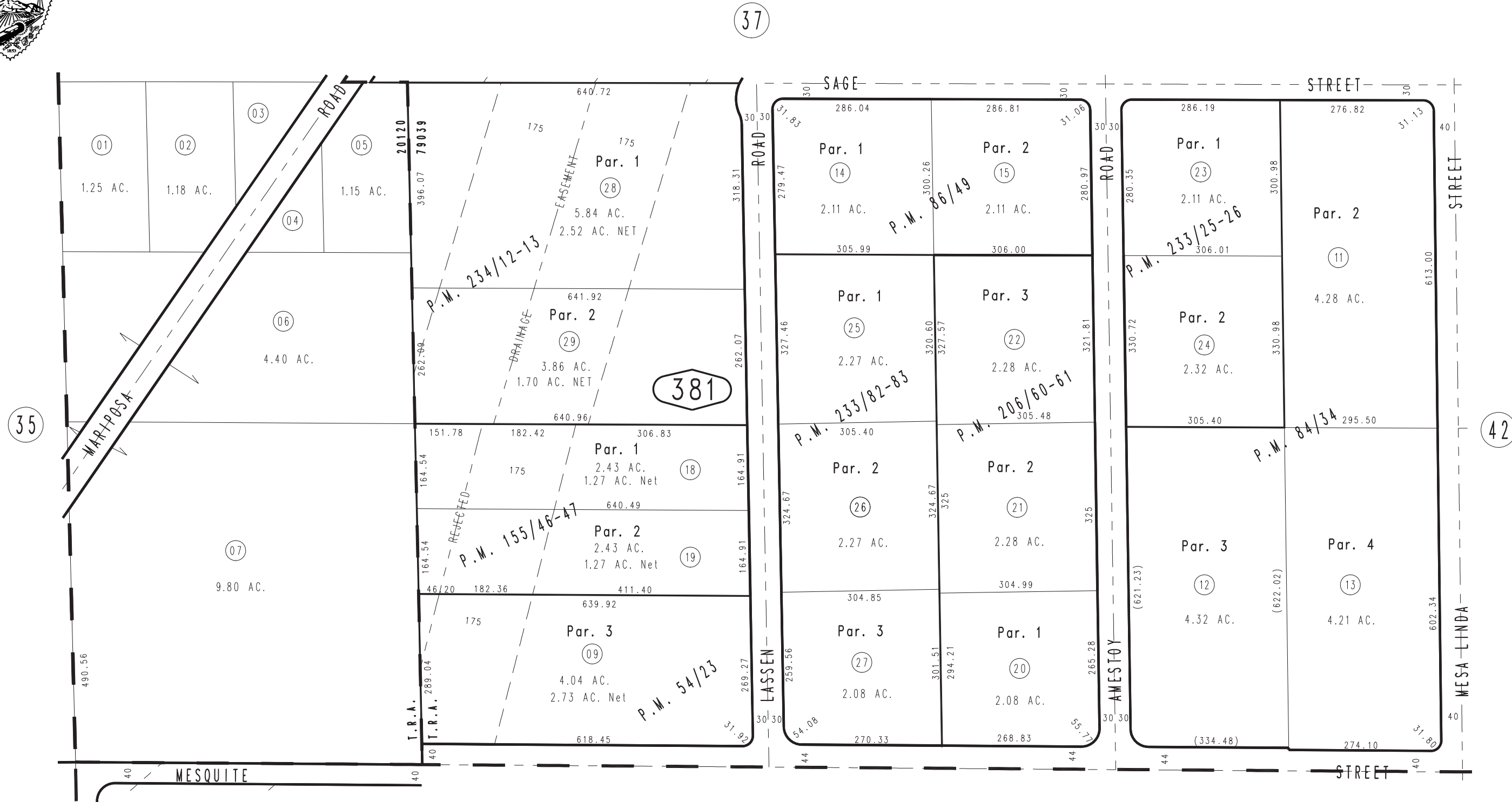
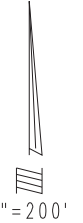


THIS MAP IS FOR THE PURPOSE OF AD VALOREM TAXATION ONLY.

S.1/2 S.W.1/4 Sec. 27, T.4N., R.5W., S.B.M.

Hesperia
Tax Rate Area
20120,79039

3039-38



Parcel Map No. 17753, P.M. 233/82-83
 Parcel Map No. 17113, P.M. 233/25-26
 Parcel Map No. 16129, P.M. 206/60-61
 Parcel Map No. 13593, P.M. 155/46-47
 Parcel Map No. 8327, P.M. 86/49
 Ptn. Parcel Map No. 8177, P.M. 84/34
 Ptn. Parcel Map No. 5743, P.M. 54/23

Parcel Map No. 17766, P.M. 234/12-13

JULY 1996

Assessor's Map
 Book 3039 Page 38
 San Bernardino County

REVISED
 06/04/14 GW