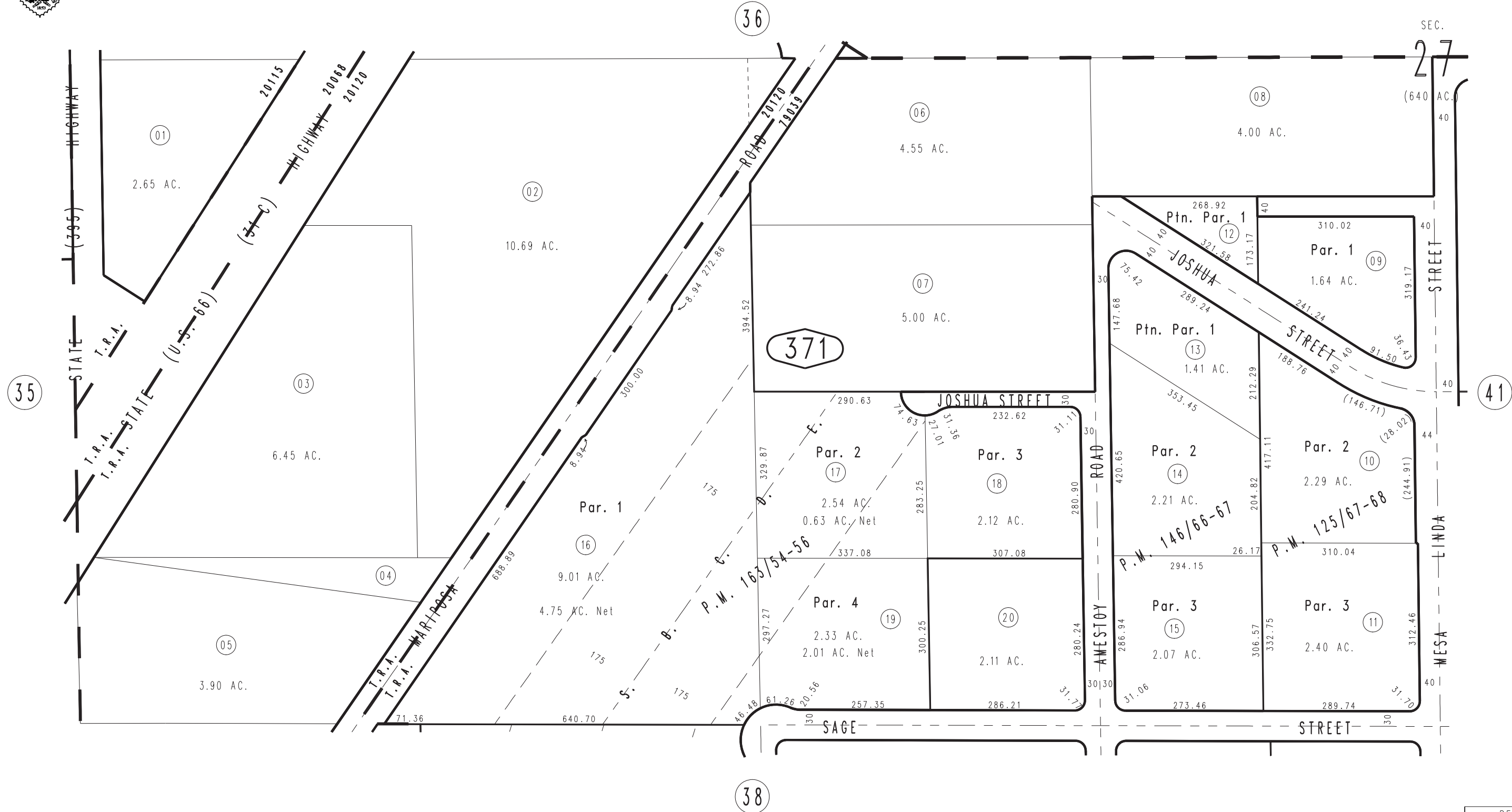


THIS MAP IS FOR THE PURPOSE
OF AD VALOREM TAXATION ONLY.

N.1/2 S.W.1/4 Sec. 27, T.4N., R.5W., S.B.M.

City of Hesperia
Tax Rate Area
20068,20115,20120
79039

3039-37



JULY 1996

Parcel Map No. 13453, P.M. 163/54-56
Parcel Map No. 12761, P.M. 146/66-67
Parcel Map No. 11182, P.M. 125/67-68

Assessor's Map
Book 3039 Page 37
San Bernardino County

REVISED
05/18/17 KA