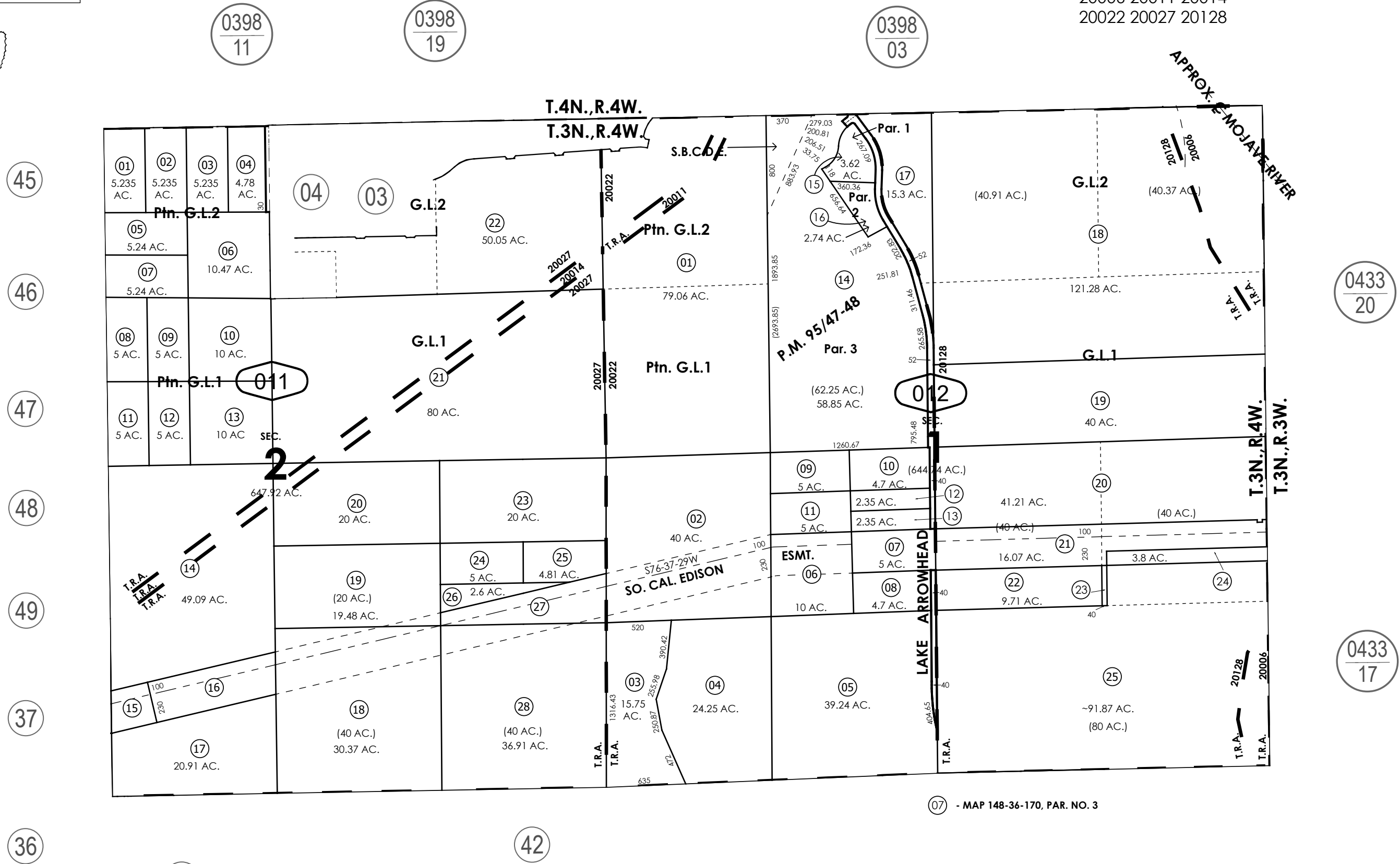


THIS MAP IS FOR THE PURPOSE OF AD VALOREM TAXATION ONLY.

Fractional Sec.1&2, T.3N.,R.4W., S.B.B.&M.

City of Hesperia
Tax Rate Area
20006 20011 20014
20022 20027 20128

3027 - 01



0398
11

0398
19

0398
03

0433
20

0433
17

- 15 - MAP 148-36-169, PAR. NO. 5
- 16 - MAP 148-36-170, PAR. NO. 1
- 26 - MAP 148-36-170C, PAR. NO. 1
- 27 - MAP 148-36-170, PAR. NO. 2

Assessor's Map
Book 3027 Page 01
San Bernardino County

REVISED
02/20/26 BS