

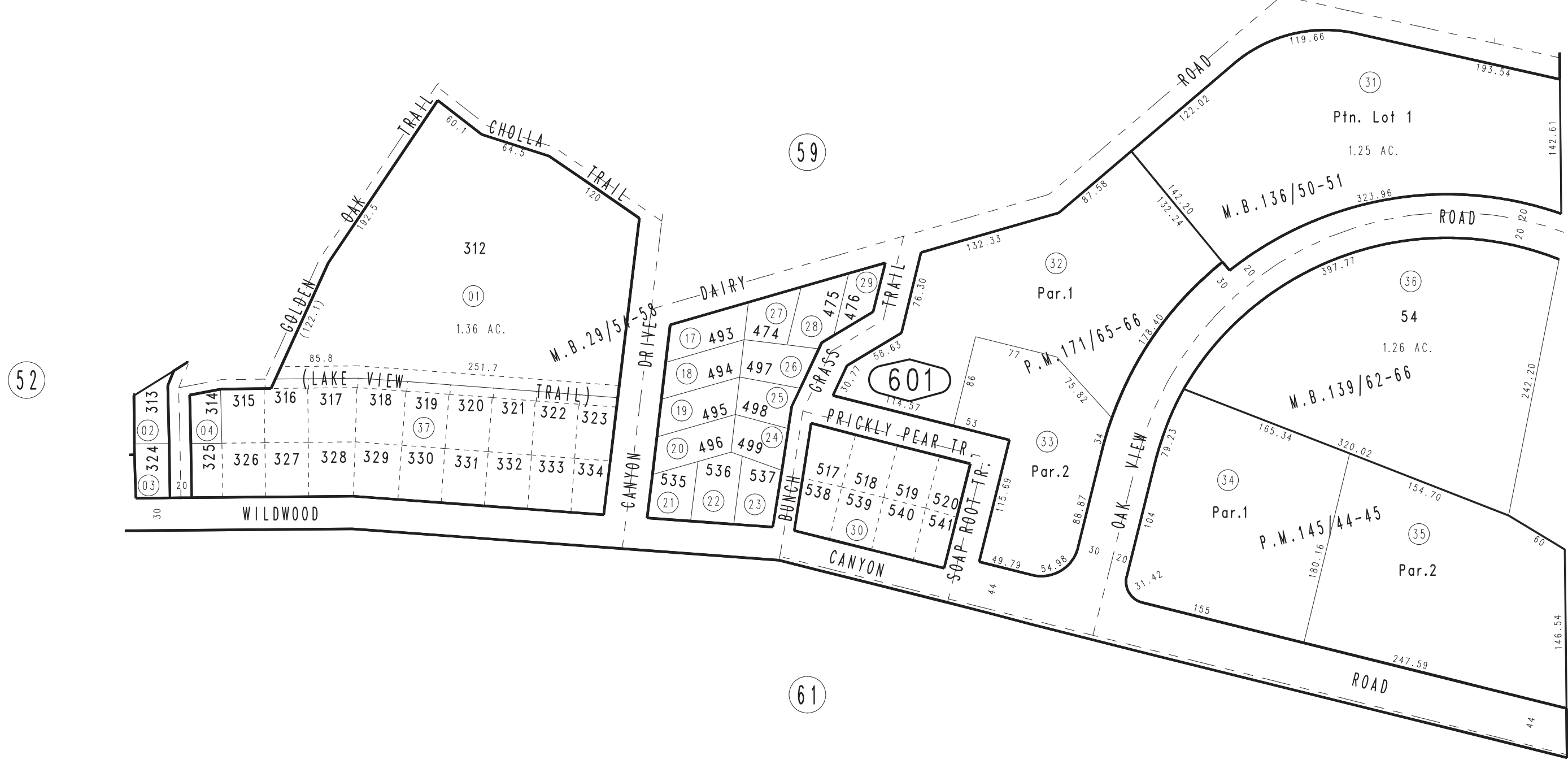
THIS MAP IS FOR THE PURPOSE  
OF AD VALOREM TAXATION ONLY.



# Ptn. Wildwood Lodge Unit No.1 Ptn. No. Tract 1978, M.B.29/54-58

City of Yucaipa  
Tax Rate Area  
22008

1242 - 60



52

0322  
58

61

Ptn. Tract No. 8814, M.B.139/62-66  
Ptn. Tract No. 9553, M.B.136/50-51  
Parcel Map No. 14071, P.M.171/65-66  
Parcel Map No. 11379, P.M.145/44-45

April 2004 KP

Ptn. N.E.1/4, Sec. 8  
T.2S., R.1W.

Assessor's Map  
Book 1242 Page 60  
San Bernardino County

REVISED  
07/13/23 KC