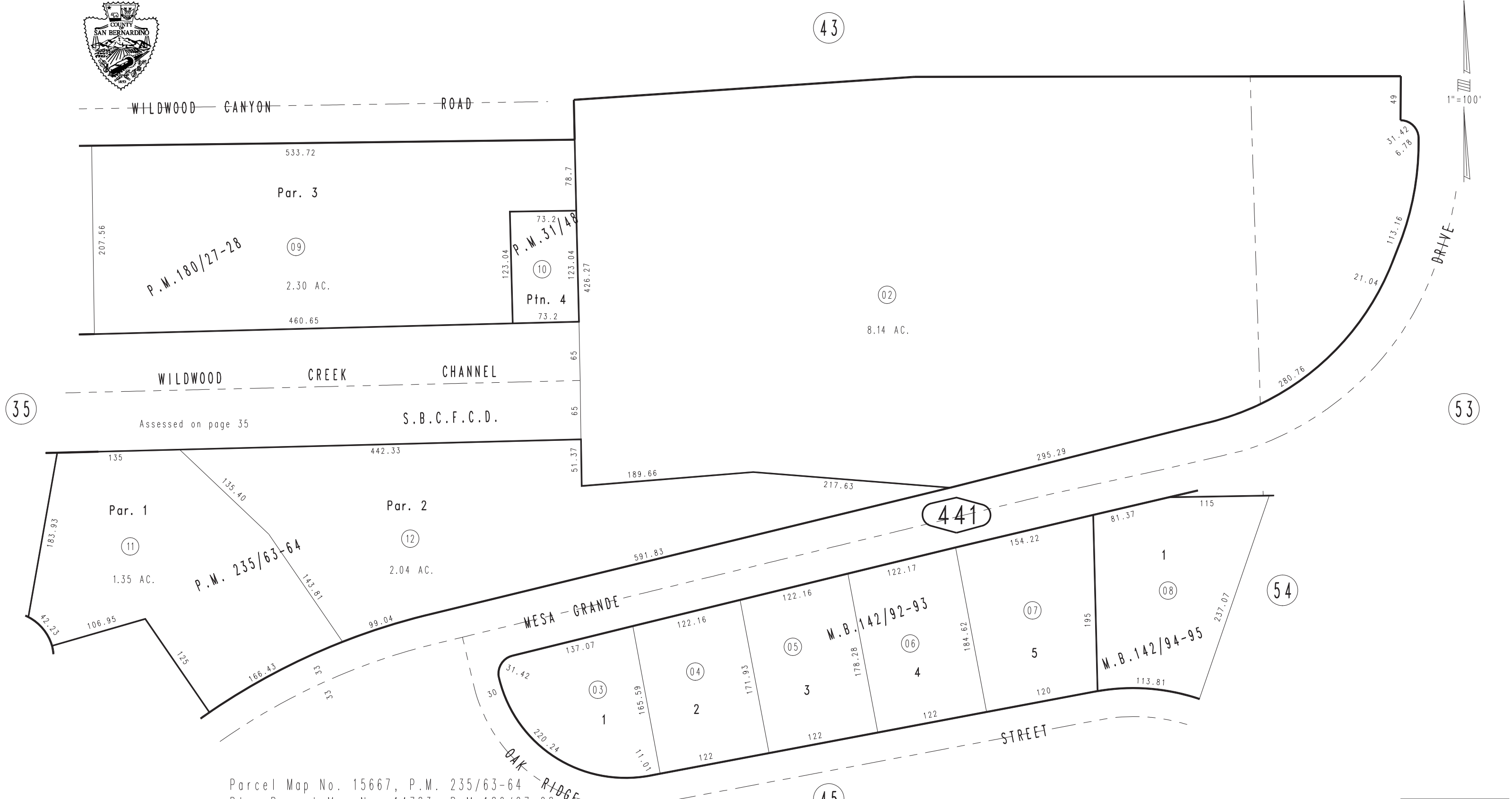


THIS MAP IS FOR THE PURPOSE  
OF AD VALOREM TAXATION ONLY.

Ptn. N.1/2 Sec.8, T.2S. R.1W., S.B.B.&M.

City of Yucaipa  
Tax Rate Area  
22008

1242 - 44



35

53

54

45

Parcel Map No. 15667, P.M. 235/63-64  
Ptn. Parcel Map No. 14783, P.M.180/27-28  
Ptn. Parcel Map No. 3181, P.M.31-48  
Ptn. Tract No. 10053, M.B.172/40-43, Amending Map, M.B.180/27-30  
Ptn. Tract No. 9408, M.B.142/94-95  
Ptn. Tract No. 10174, M.B.142/92-93

April 2004 KP

Assessor's Map  
Book 1242 Page 44  
San Bernardino County

REVISED  
02/04/10 RM