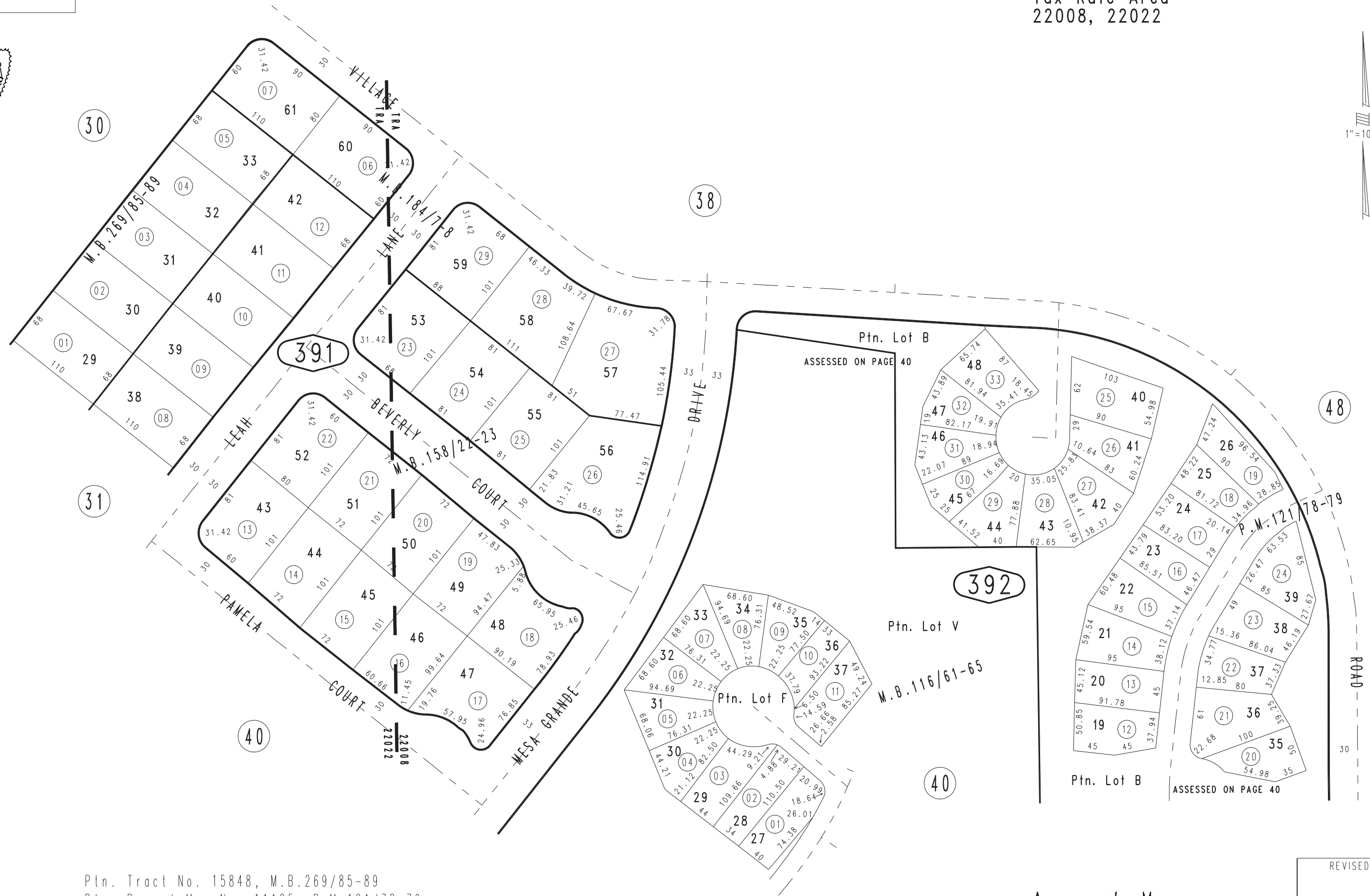


THIS MAP IS FOR THE PURPOSE OF AD VALOREM TAXATION ONLY.

# Ptn. Tract No. 8472, M.B.116/61-65

City of Yucaipa  
Tax Rate Area  
22008, 22022

1242 - 39



Ptn. Tract No. 15848, M.B.269/85-89  
 Ptn. Parcel Map No. 11125, P.M.121/78-79  
 Ptn. Tract No. 9673, M.B.184/7-8  
 Ptn. Tract No. 9673-2, M.B.158/22-23

April 2004 KMP

Ptn. SW.1/4, Sec. 8  
T.2S., R.1W.

Assessor's Map  
Book 1242 Page 39  
San Bernardino County

REVISED