

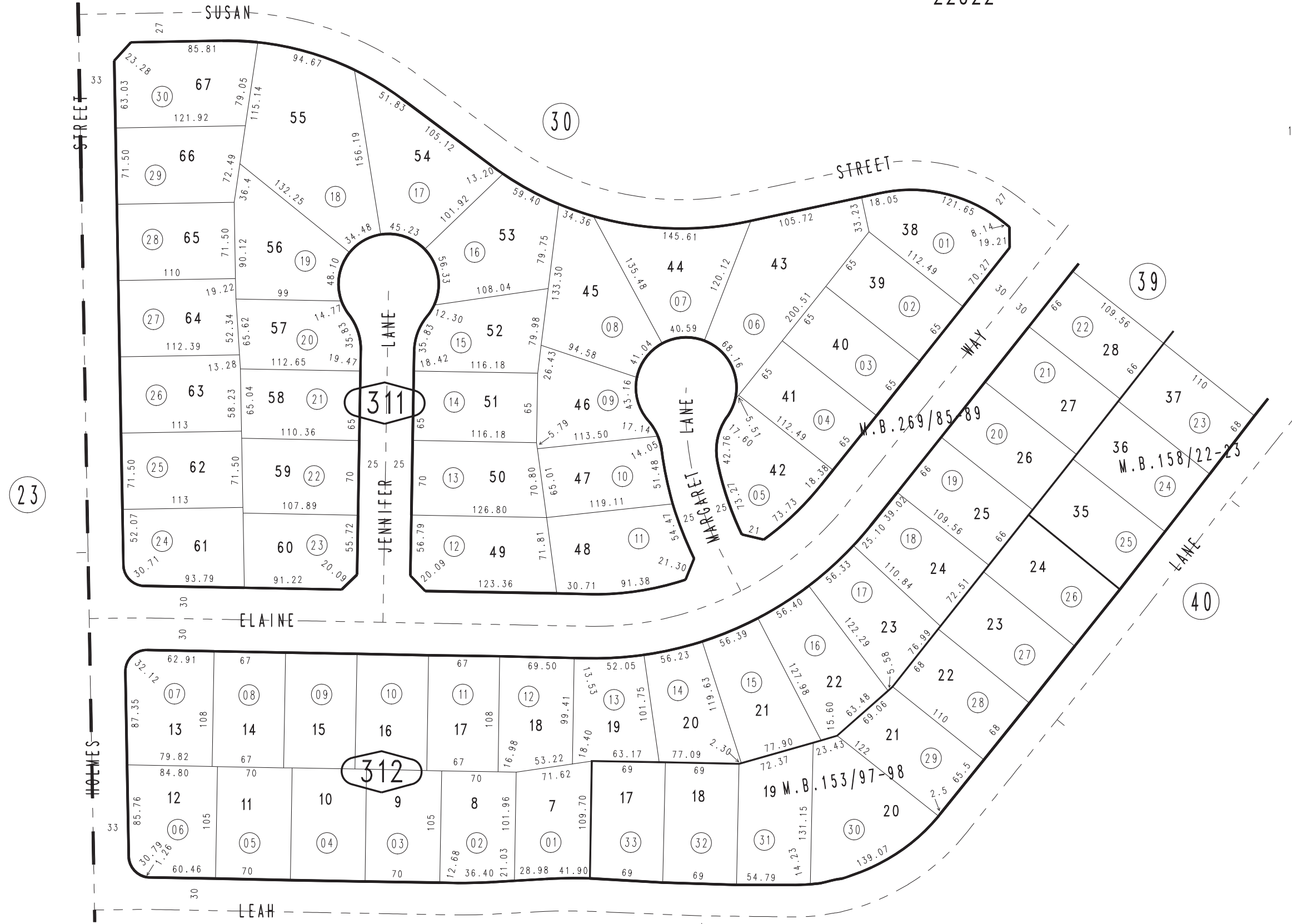
THIS MAP IS FOR THE PURPOSE OF AD VALOREM TAXATION ONLY.



Ptn. Tract No. 9673-1, M.B.153/97-98

City of Yucaipa  
Tax Rate Area  
22022

1242 - 31



April 2004 KP

Ptn. Tract No. 15848, M.B.269/85-89  
Ptn. Tract No. 9673-2, M.B.158/22-23

Ptn. S.E.1/4, Sec. 7  
T.2S., R.1W.

Assessor's Map  
Book 1242 Page 31  
San Bernardino County

REVISED