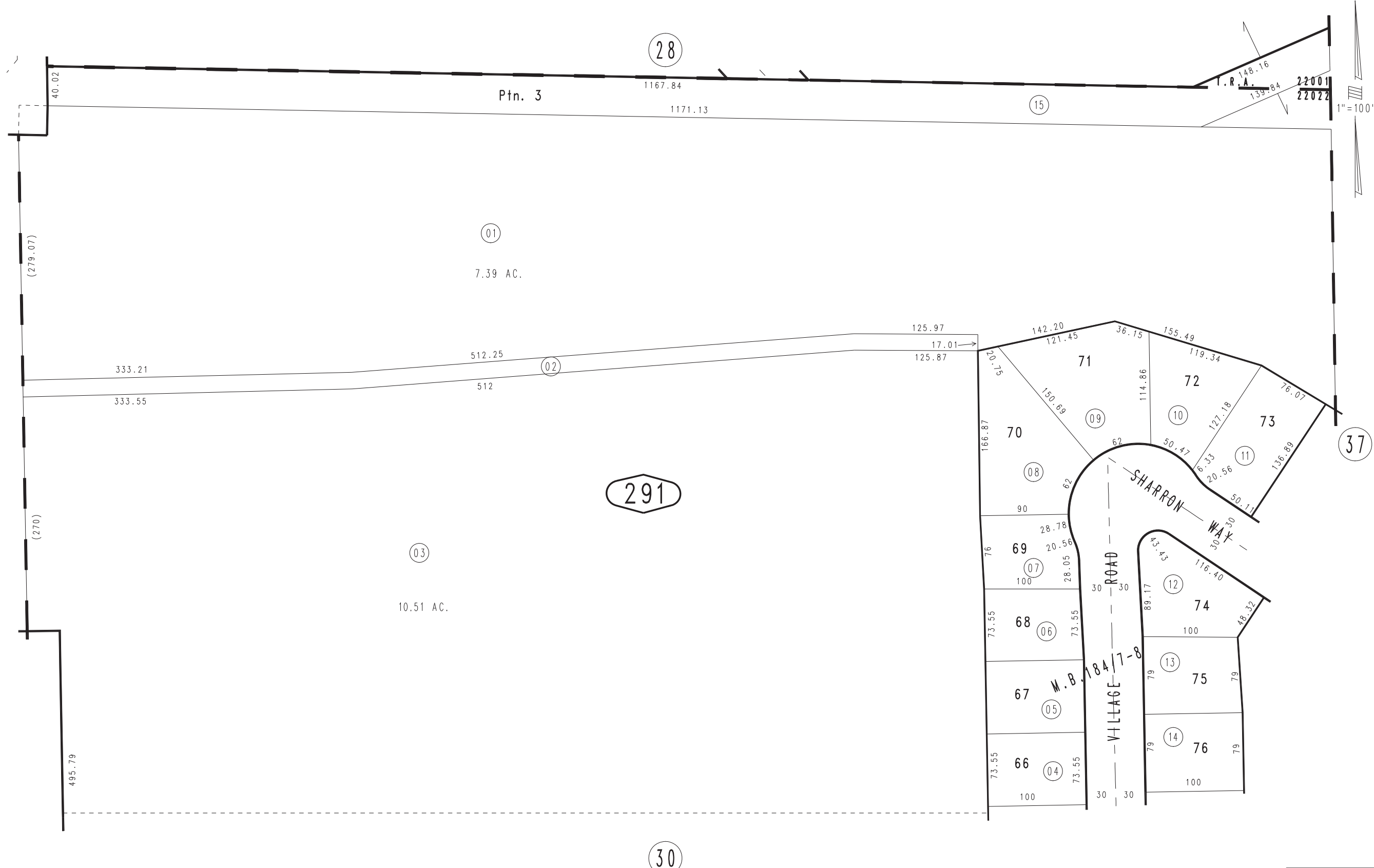


THIS MAP IS FOR THE PURPOSE
OF AD VALOREM TAXATION ONLY.

Ptn. E.1/2 Sec.7, T.2S. R.1W., S.B.B.& M.

City of Yucaipa
Tax Rate Area
22022, 22001

1242 - 29



21

22

28

Ptn. 3

1167.84

1171.13

15

I.R.A.
148.16
139.84

22001
22022

1"=100'

01
7.39 AC.

02

125.97

17.01

125.87

333.21

512.25

512

333.55

291

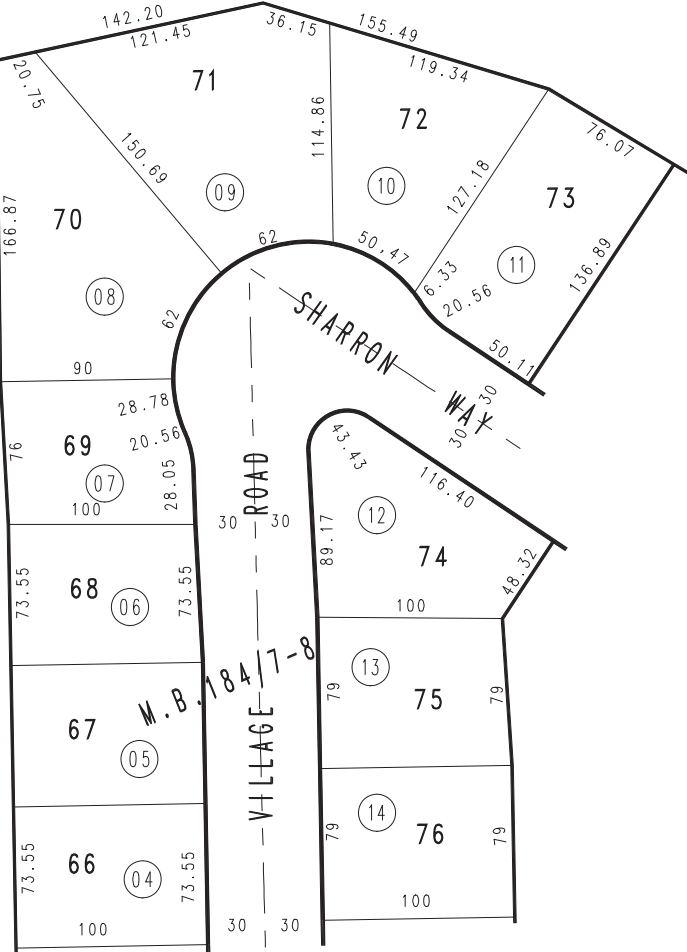
03

10.51 AC.

(279.07)

(270)

495.79



37

30