

THIS MAP IS FOR THE PURPOSE OF AD VALOREM TAXATION ONLY.

Ptn. Tract No. 14641, M.B.246/91-94

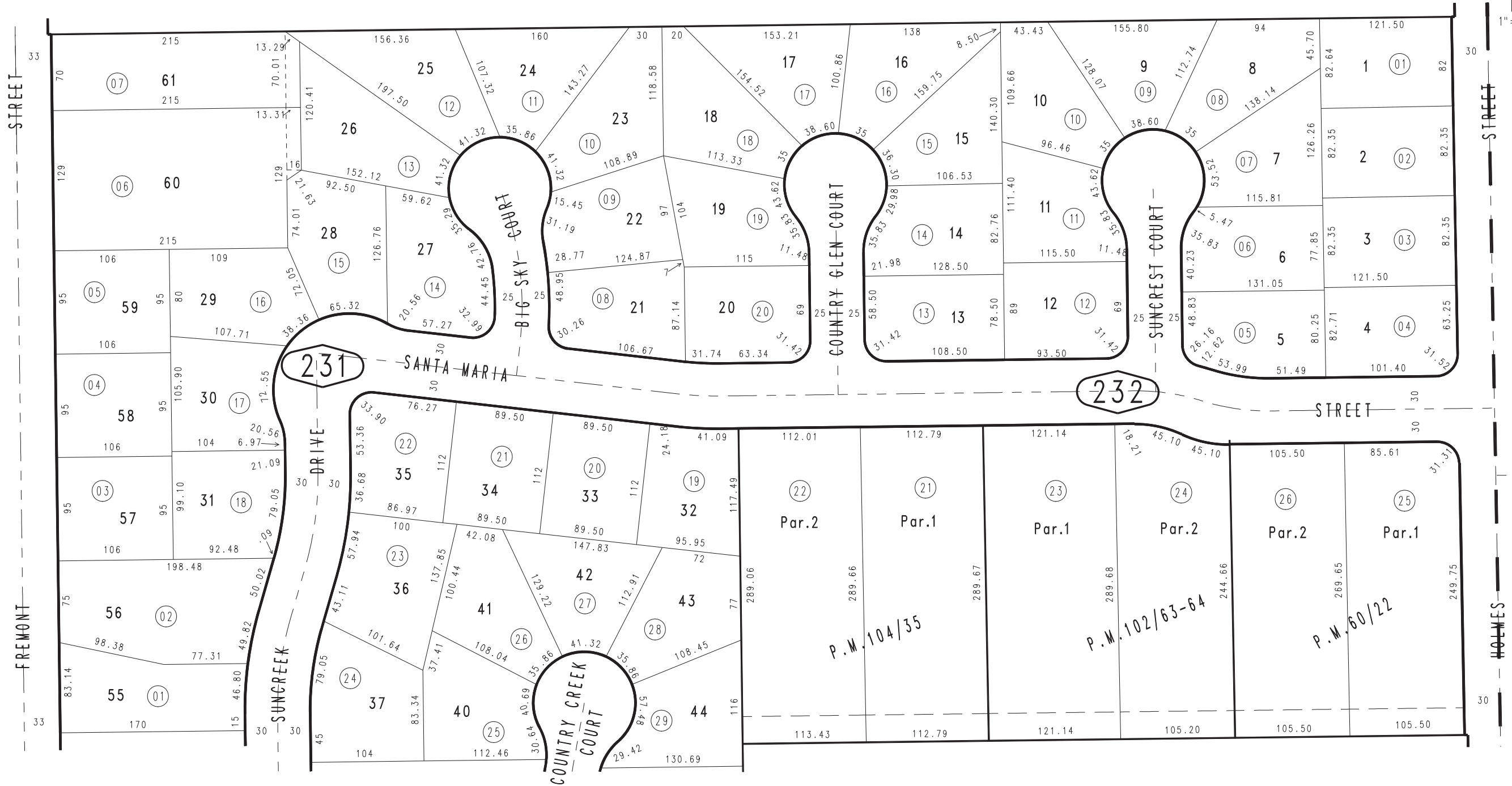
City of Yucaipa
Tax Rate Area
22001

1242 - 23



22

1"=100'



15

31

24

April 2004 KP

Parcel Map No. 9113, P.M.104/35
 Parcel Map No. 9609, P.M.102/63-64
 Parcel Map No. 4698, P.M.60/22

Ptn. S.E.1/4, Sec. 7
 T.2S., R.1W.

Assessor's Map
 Book 1242 Page 23
 San Bernardino County

REVISED