

THIS MAP IS FOR THE PURPOSE  
OF AD VALOREM TAXATION ONLY.

# Ptn. Sub. No.2, Part of Yucaipa Valley Redlands & Yucaipa Land Co., M.B.17/99-100

0322  
45

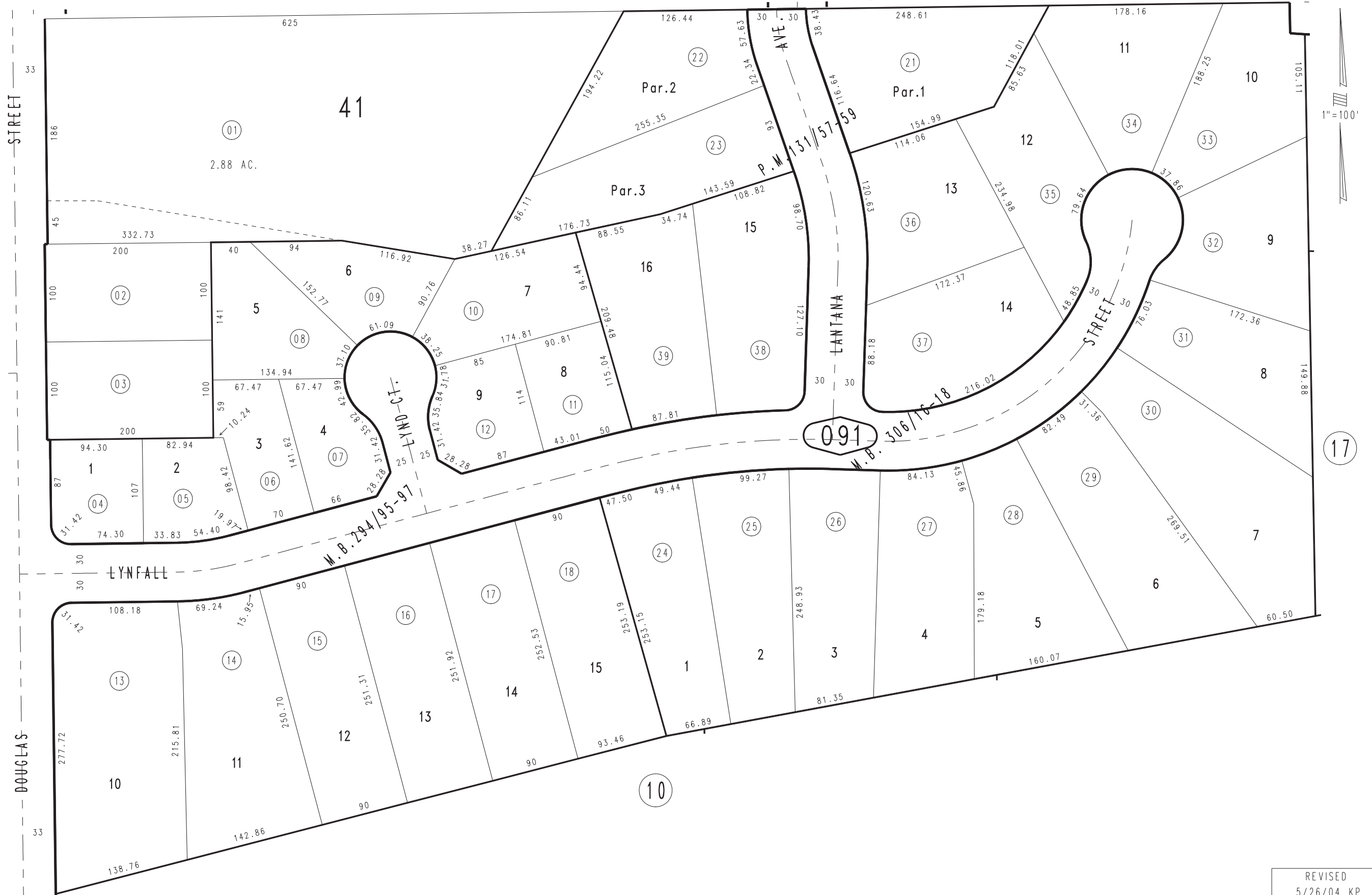
City of Yucaipa  
Tax Rate Area  
22002

1242 - 09



01

02



Tract No. 16293, M.B. 306/16-18  
Tract No. 10130-1, M.B.255/29-31, Amended M.B. 294/95-97  
Parcel Map No. 8296, P.M.131/57-59

Ptn. N.W.1/4, Sec. 7  
T.2S., R.1W.

Assessor's Map  
Book 1242 Page 09  
San Bernardino County

REVISED  
5/26/04 KP  
07/27/05 GW