

THIS MAP IS FOR THE PURPOSE OF AD VALOREM TAXATION ONLY.

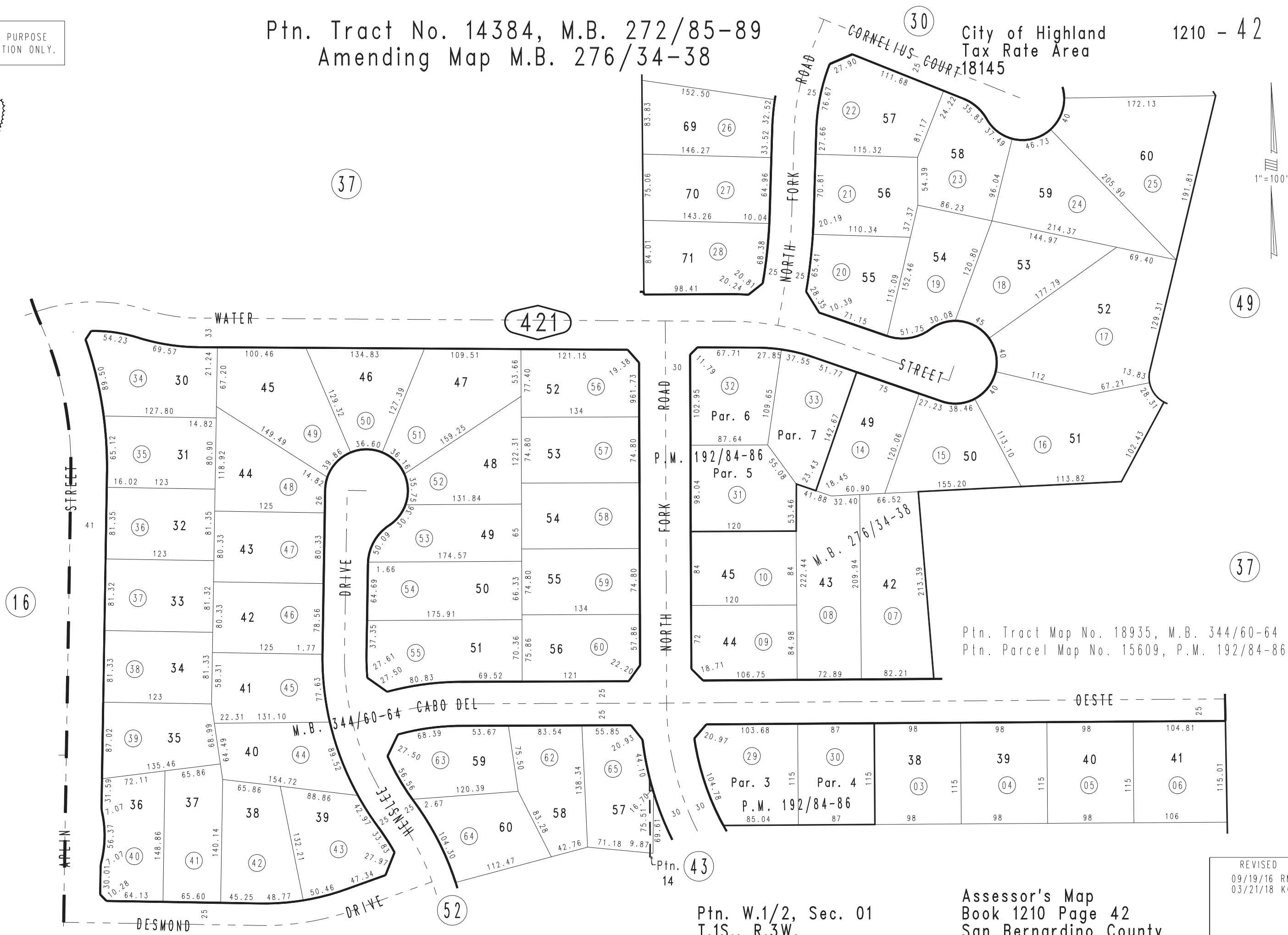


Ptn. Tract No. 14384, M.B. 272/85-89 Amending Map M.B. 276/34-38

City of Highland
Tax Rate Area
18145

1210 - 42

1" = 100'



Ptn. Tract Map No. 18935, M.B. 344/60-64
Ptn. Parcel Map No. 15609, P.M. 192/84-86