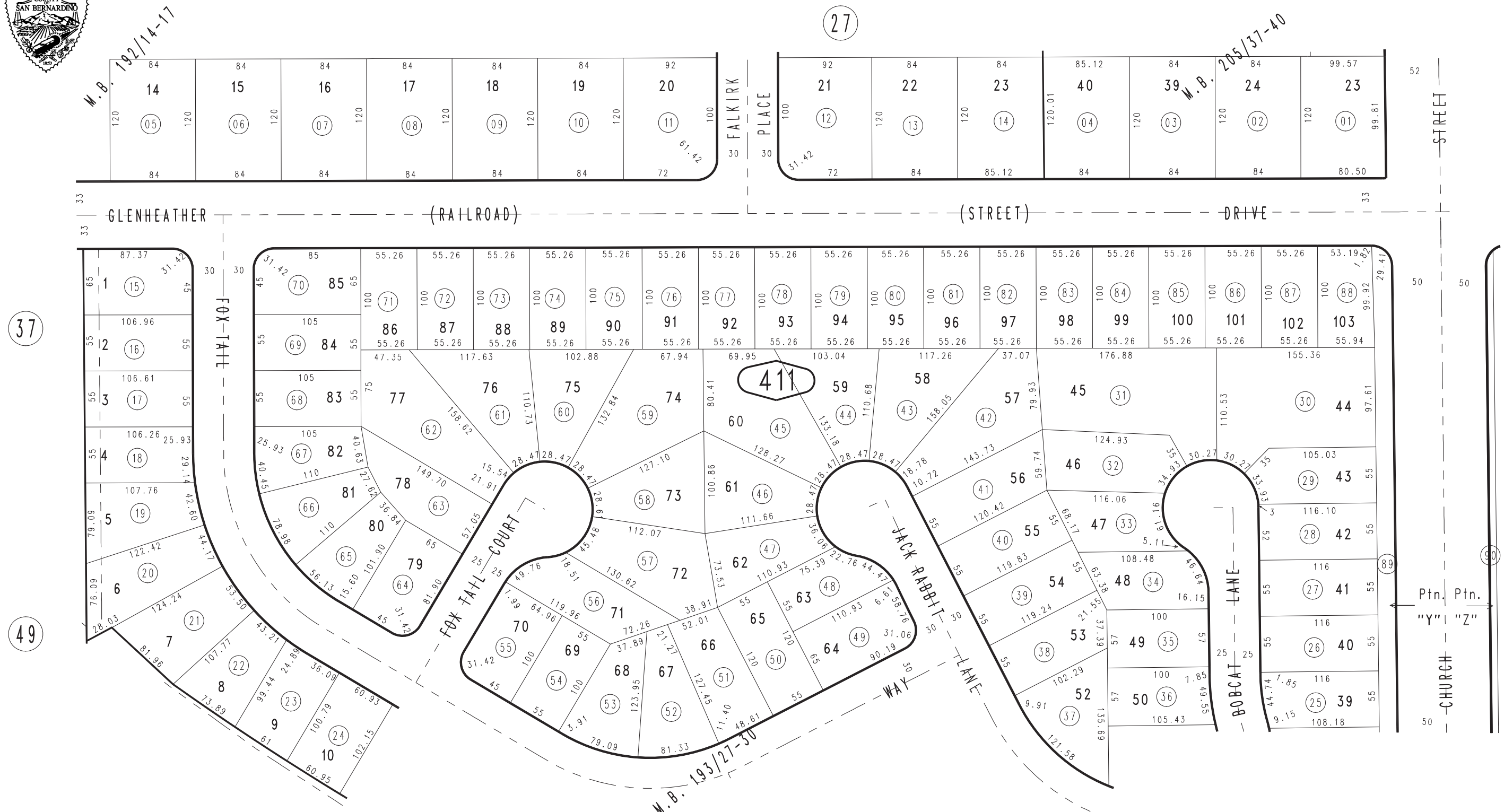


THIS MAP IS FOR THE PURPOSE OF AD VALOREM TAXATION ONLY.

# Ptn. Tract No. 10726, M.B.182/98-101, Amending Map, M.B. 205/37-40

City of Highland  
Tax Rate Area  
18001

1201 - 41



OCTOBER 1996

Ptn. Tract No. 12636, M.B. 193/27-30  
Ptn. Tract No. 10725, M.B. 192/14-17

Ptn. S.E.1/4, Sec. 3  
T.1S., R.3W.

Assessor's Map  
Book 1201 Page 41  
San Bernardino County

REVISED  
09/29/17 BK-MC