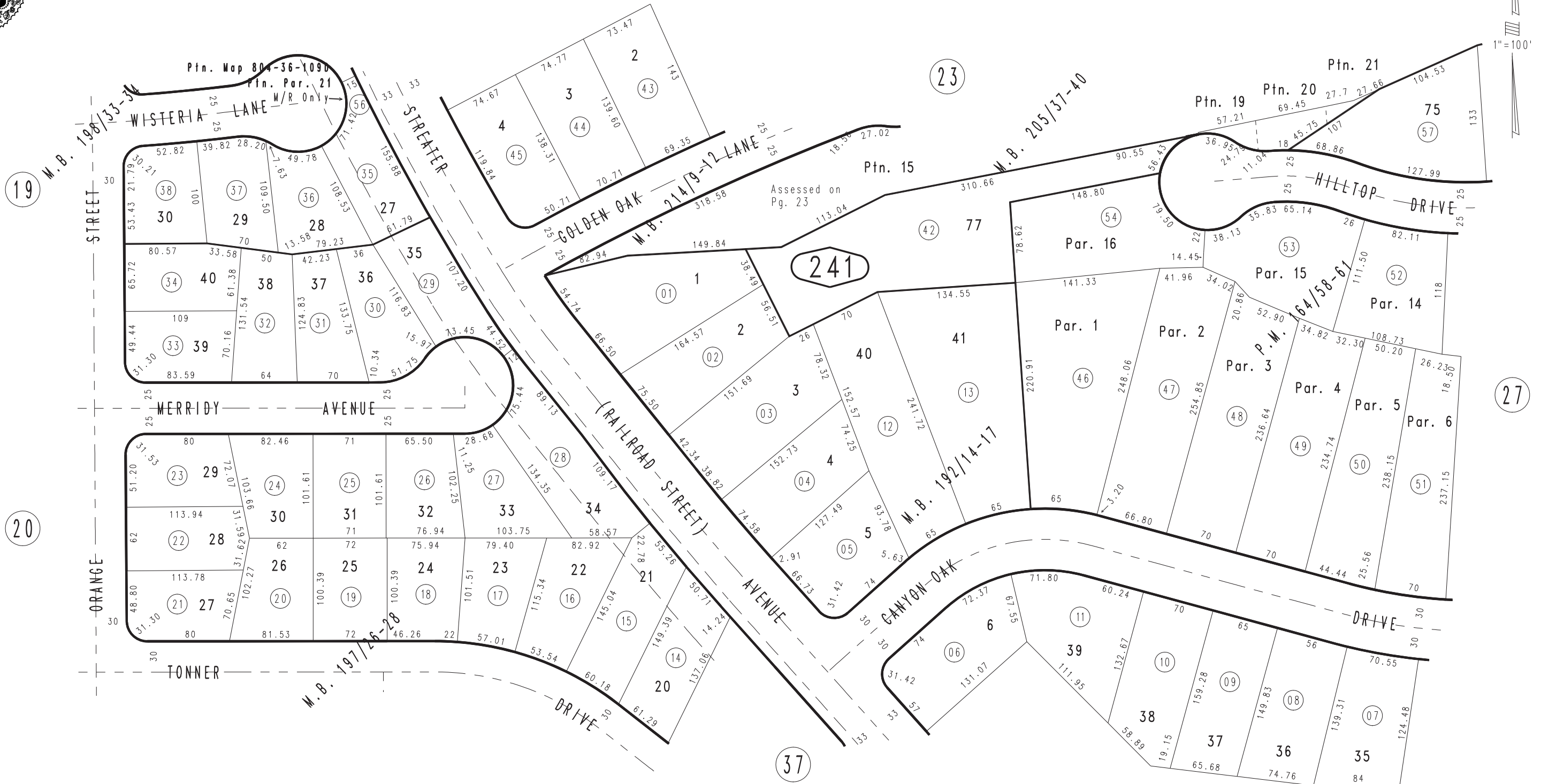


THIS MAP IS FOR THE PURPOSE OF AD VALOREM TAXATION ONLY.

Ptn. Tract No. 10726, M.B. 182/98-101 Amending Map, M.B. 205/37-40

City of Highland
Tax Rate Area
18001

1201 - 24



Ptn. Tract No. 10727, M.B. 203/23-26, Amending Map, M.B. 214/9-12
 Ptn. Parcel Map No. 10578, P.M. 164/58-61
 Ptn. Tract No. 12620, M.B. 198/33-34
 Ptn. Tract No. 12620-1, M.B. 197/26-28
 Ptn. Tract No. 10725, M.B. 192/14-17

Ptn. N.E.1/4, Sec. 3
 T.1S., R.3W.

Assessor's Map
 Book 1201 Page 24
 San Bernardino County

REVISED
 04/19/11 BK
 05/03/11 KA